



**Western  
Bay of Plenty  
District Council**

# **MINUTES ATTACHMENTS**

**Maketu Community Board  
MKCB26-3**

**Tuesday, 16 June 2026**



## Table of Contents

---

8.1	Maketū Climate Action Group Presentation	
	Attachment 1 PowerPoint Presentation 1 - Maketū Climate Change .....	4

# Planning a survivable future for Maketu

An iwi-led, community driven approach to climate change resilience



[www.MaketuClimatePlan.iwi.nz](http://www.MaketuClimatePlan.iwi.nz)



**HE TOKA TŪ  
MOANA MŌ MAKETU**  
MAKETU CLIMATE CHANGE  
ADAPTATION PLAN

Iwi led  
Community involved  
Agency supported

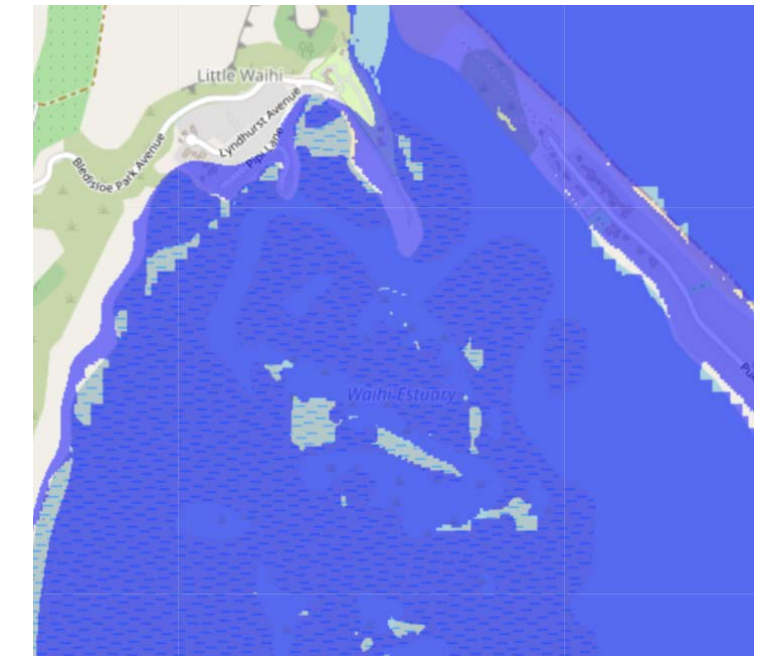
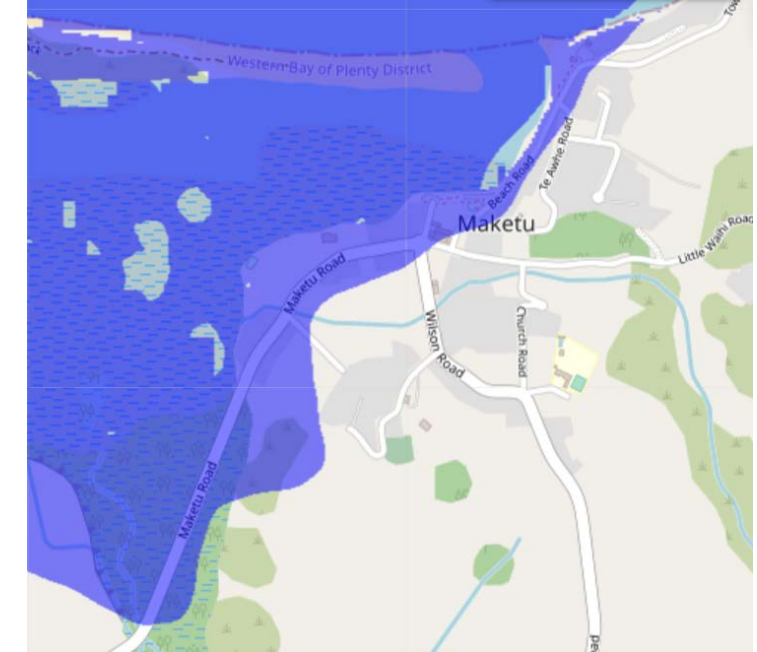
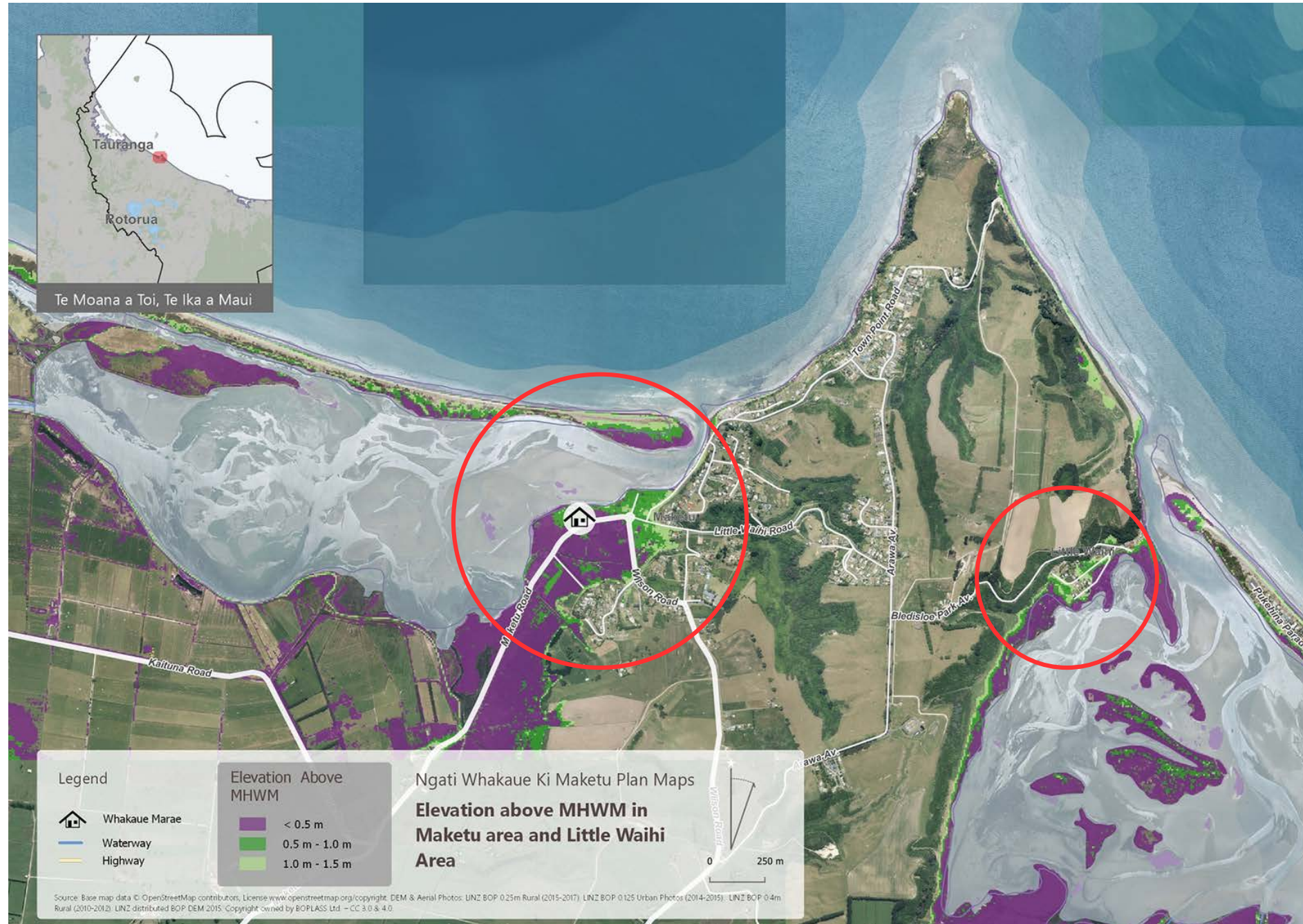


© Ar



[https://www.youtube.com/watch?v=KYv\\_nITxD-o&ab\\_channel=JackyJames](https://www.youtube.com/watch?v=KYv_nITxD-o&ab_channel=JackyJames)

# Our Why





# Our Why



CLIMATE CHANGE IMPACTS ARE IRREVERSIBLE  
WITH 40% OF THE WORLD'S POPULATION  
VULNERABLE. WE'VE ADAPTED BEFORE.  
WE CAN ADAPT AGAIN.

**JIM O'CALLAGHAN**  
NGĀTI WHAKAUE, TAPUIKA, WAITAHA

Climate Change Wānanga  
March / April 2022

# Our Approach

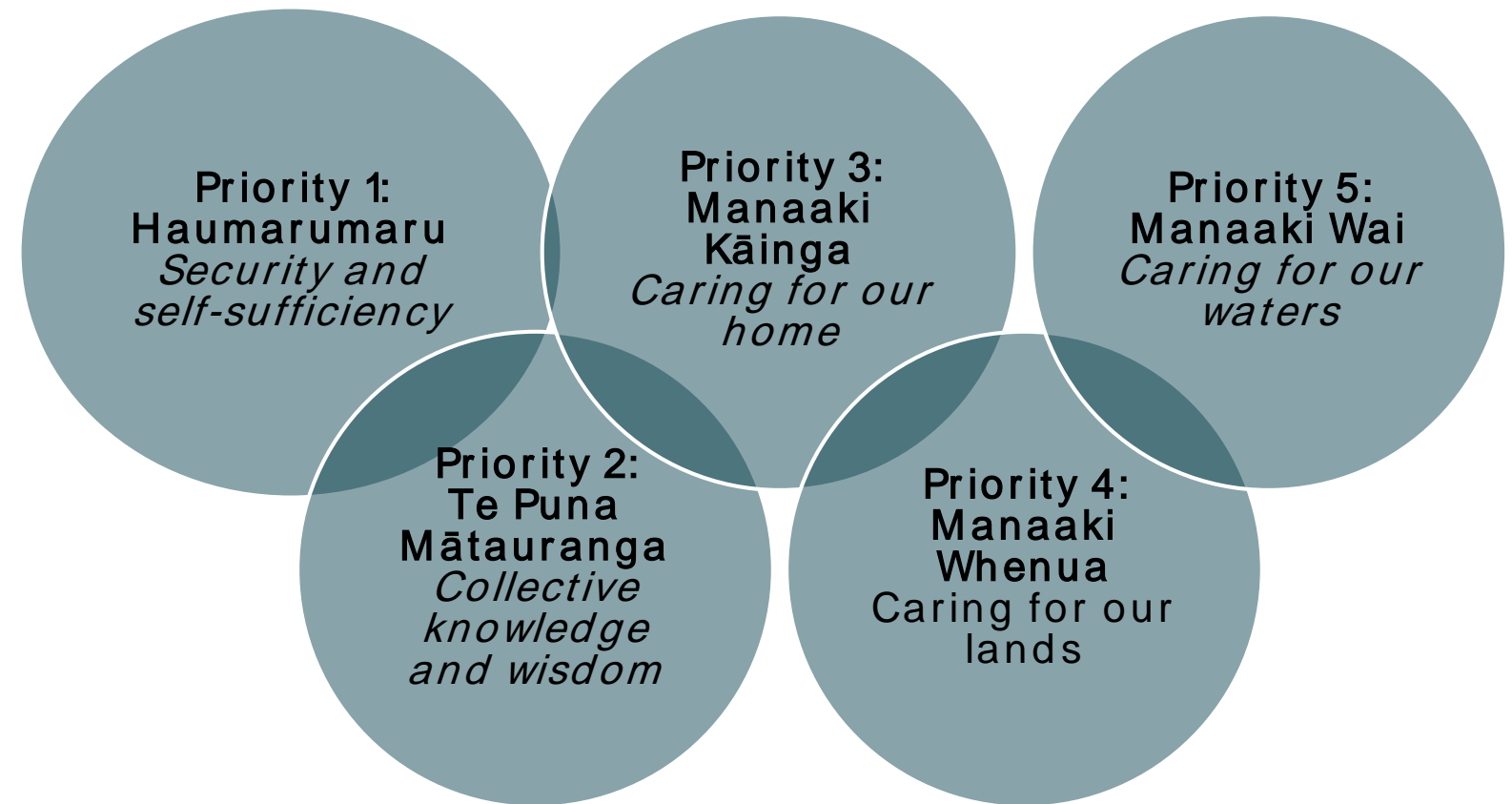


<b>Rangatiratanga</b> Self-determination	<b>Kotahitanga</b> Collective action	<b>Tikanga</b> Practice
<b>Māramatanga</b> Collective enlightenment	<b>Manaakitanga</b> Collective care	<b>Kaitiakitanga</b> Safeguarding our future
	<b>Whānaungatanga</b> Connectivity	

# Our Vision & Priorities

## ME TOKA TŪ TONU TĀTOU

The Maketu community is prepared for, can adapt, and be resilient to a changing climate.



5 Strategic Priorities | 12 Projects



# Our Projects



1. Community emergency response planning
2. Food gardens and tree nursery
3. Circular economy
4. Infrastructure assessment
5. Climate resilient homes
6. Zone-specific risk assessments
7. Managed retreat planning
8. Research and monitoring
9. Tree planting and wetland restoration
10. Climate change education programme
11. Climate change information hub
12. Land use change project



# Enabling Actions

Backbone Support

Project Co-ordination & Reporting

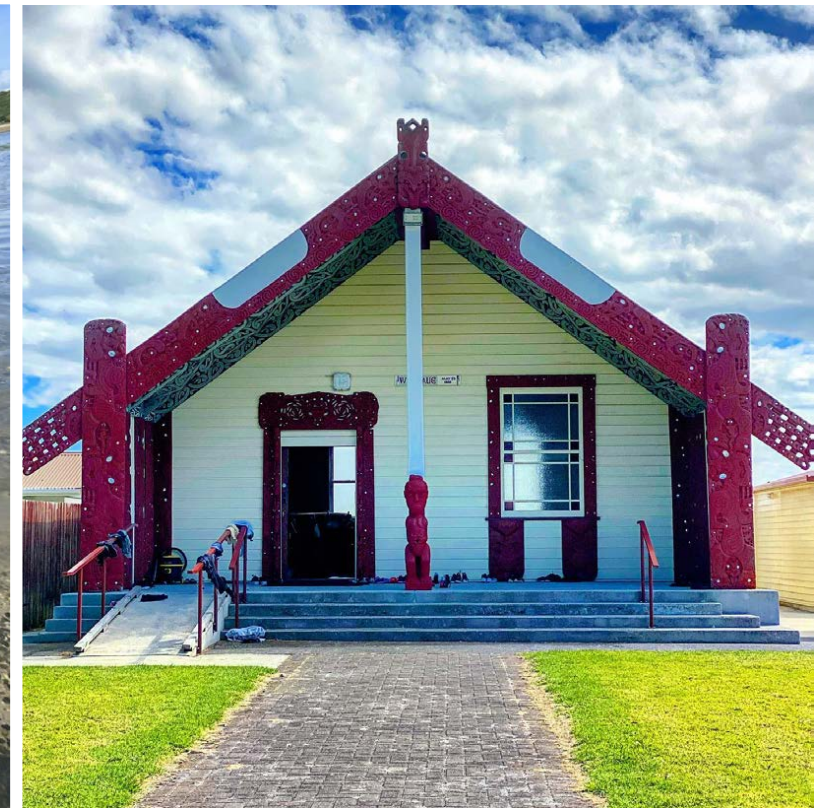
Regular Plan & Project Communication

Collaboration

Project Funding

Advocacy & Influence

Strategic Relationships





# Highlights



## A connected and mobilised community



## National & international exposure

# Reflections

**Don't plan for us**

Partner with and support us along the way  
(technical advice + data + \$\$)

**Our connection to place will remain unchanged**

(even though we may build elsewhere)

**Our cultural infrastructure is infrastructure**

**Take an intergenerational view**

**Key element to collectivism = Great Kai**





“We will be resilient like Takaparore:  
strong and steadfast against the  
elements and tides of change and  
uncertainty.

Regardless of what happens  
as a result of a changing environment,  
we will remain standing”.

[www.MaketuClimatePlan.iwi.nz](http://www.MaketuClimatePlan.iwi.nz)

# Snapshot of climate change risks to Western Bay of Plenty

Tonkin+Taylor  
 Bay of Plenty Climate Change Risk Assessment

Figure 3.3: Snapshot of climate change risks to Western Bay of Plenty District

- Marae locations
- State highway
- Railway
- River and surface flooding
- Coastal flooding

**Elements**

**Communities and settlements**  
 Many settlements within WBOP are located at the coastal edge and may be exposed to increasing coastal hazards and rainfall related flooding.

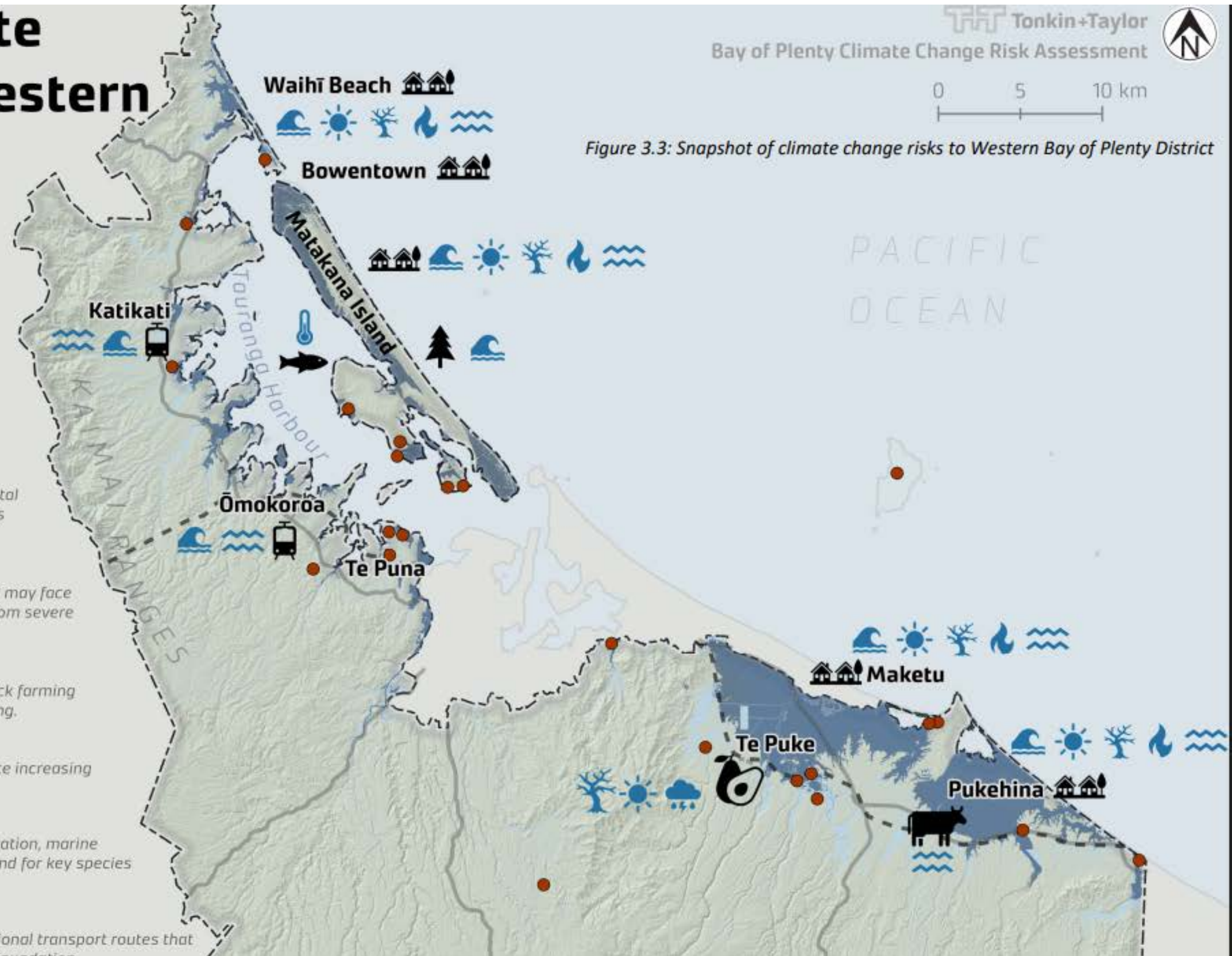
**Horticulture**  
 The strong kiwifruit and avocado industry within WBOP may face reduced winter chill, drought and increasing damage from severe weather.

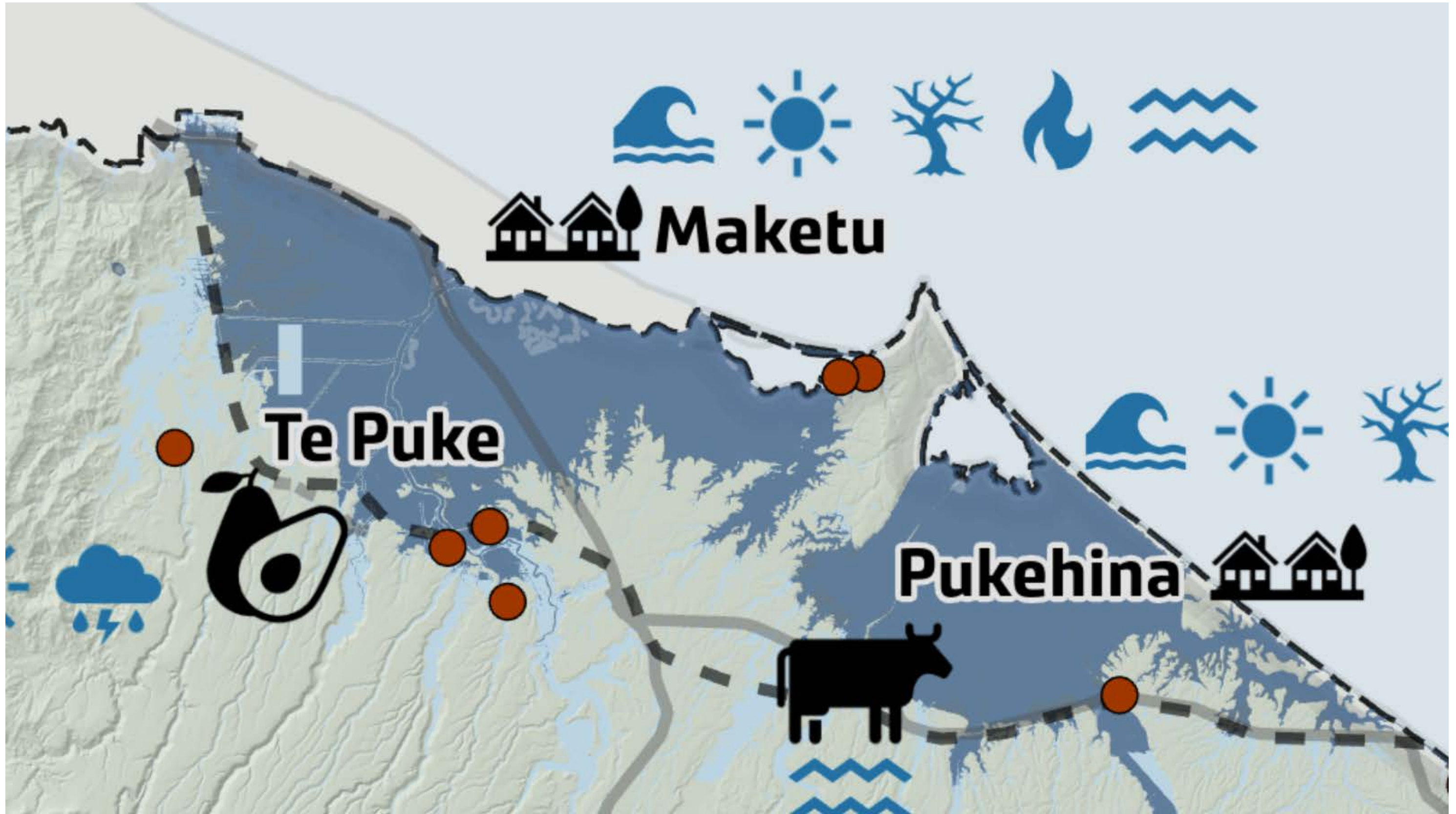
**Agriculture**  
 The low-lying peat soils within WBOP are prime livestock farming areas. These may face increasing rainfall related flooding.

**Forestry**  
 The forestry plantation within Matakana Island may face increasing damage from sea level rise and coastal erosion.

**Marine ecosystems**  
 Tauranga Harbour may experience increasing sedimentation, marine heatwaves and acidification. It is a critical nursery ground for key species that are highly sensitive to these issues.

**Transport**  
 State Highway 2 and the Ōmokoroā rail line are key regional transport routes that may face increased rainfall related flooding and coastal inundation.























### Heritage Sites & Areas WBOPDC (orange) & NZAA (green)



### Land Tenure Maori Land (purple) & TAML (black)





### Time Comparison

Current (left)  
1948 (right)

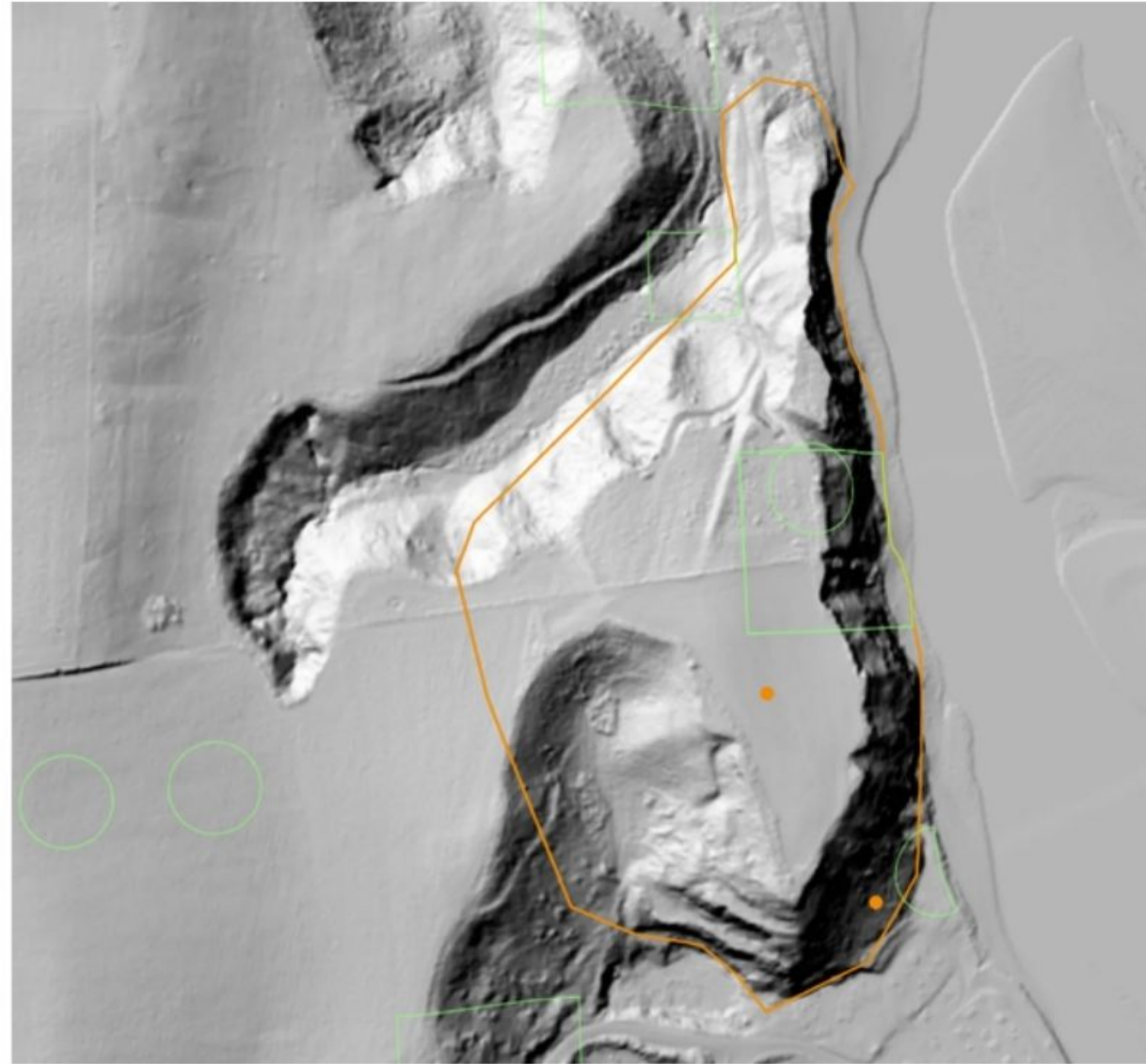


### NZAA / WBOPDC Info

id	2,725
Maori	Maori
NZAA_ID	V14/31
SiteFeatures	Midden, Ditch - lateral, Bank, Terrace, Ditch - transv
SitePeriod	Indigenous pre-1769
TARGET_FID	2,724
source_objectid	2,724
TLA	Western Bay of Plenty District
UpdatedDate	18/4/2004

### Past Site Visit Info

Defensive trench visible going onto site. Similarities of defence trench approximately 5m deep. High ridge area, 200 m2 land area. Pukehina east side drops away down the cliff. Small ledge area. Possible to exit on the North side and to go gather kai at Newdicks Beach area. The Pa Site joins up with the trench area. This site overlooks the mouth of the Pukehina / Little Waihi estuary. There are pine trees planted here a good 50 cover the ground area. This site is approx. 1 km away from Owihara Pa Site at the driveway It has been interfered with but a recommendation for an excavation to take place should occur. We are unsure who the landowners would be either the Ngawhara or Te Arawa Lakes Trusts.



### Terrain and Landform



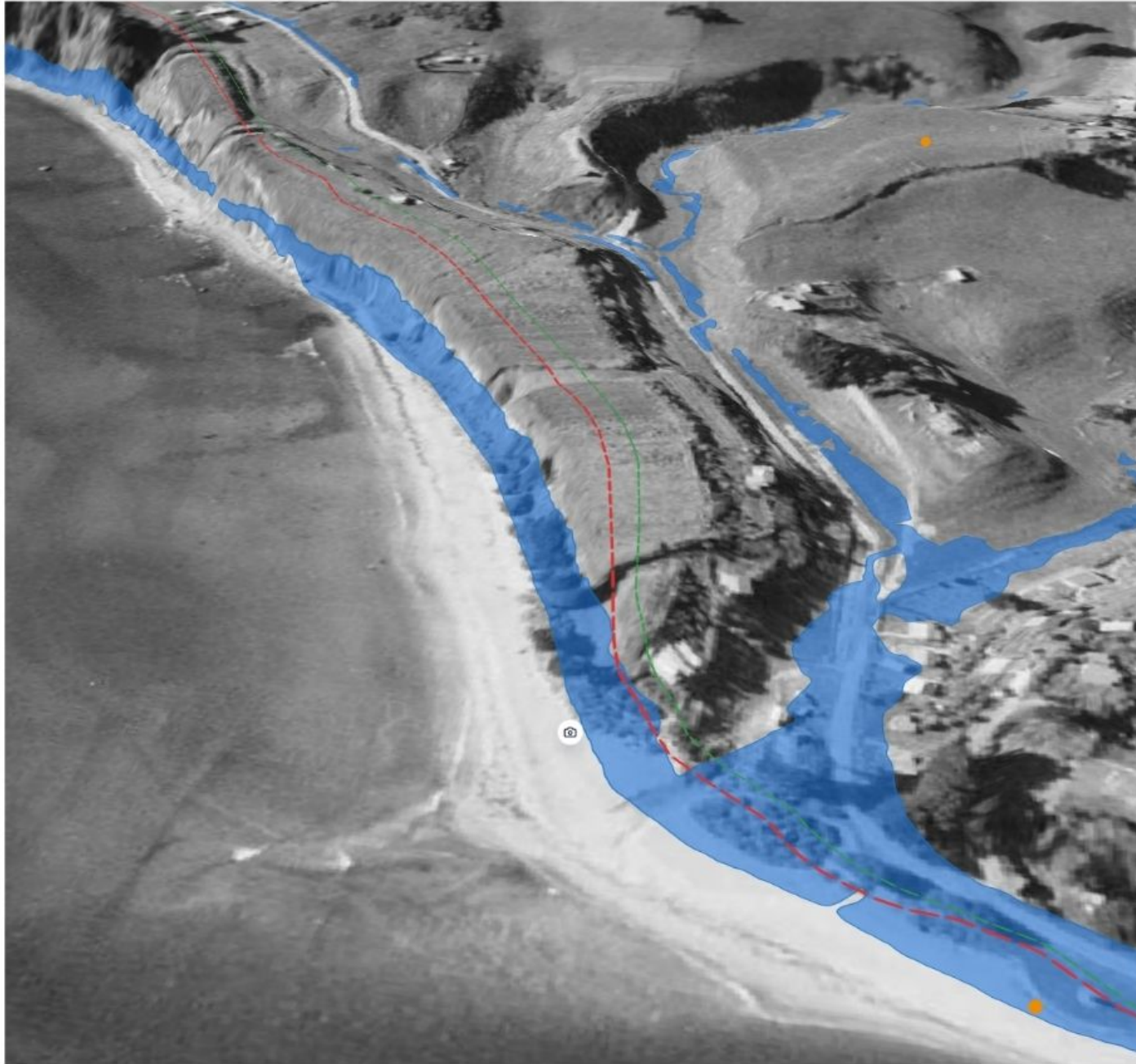
### NZAA / WBOPDC Info

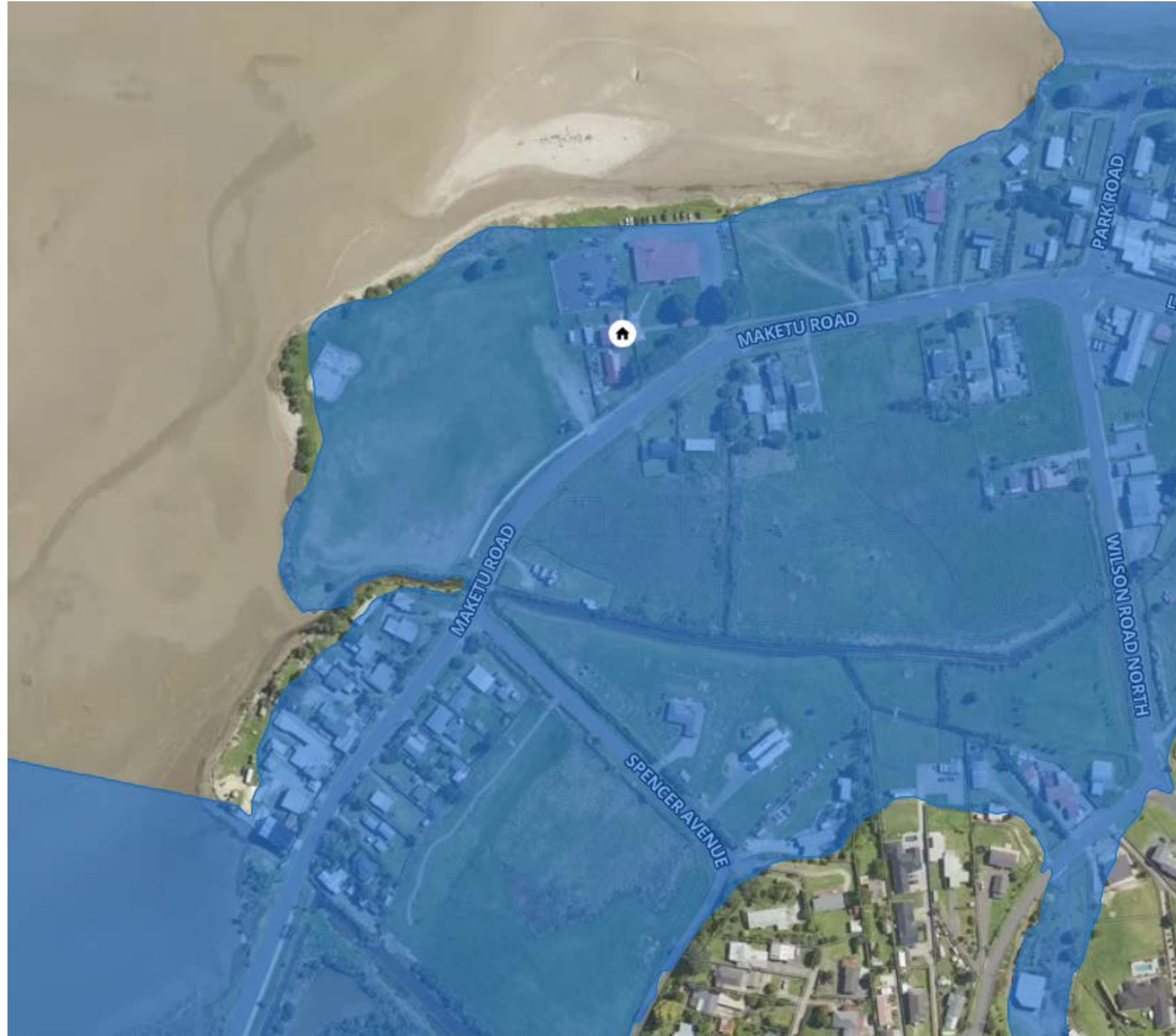
id	2,725
Maori	Maori
NZAA_ID	V14/31
SiteFeatures	Midden, Ditch - lateral, Bank, Terrace, Ditch - transv
SitePeriod	Indigenous pre-1769
TARGET_FID	2,724
source_objectid	2,724
TLA	Western Bay of Plenty District
UpdatedDate	18/4/2004

### Past Site Visit Info

Defensive trench visible going onto site. Similarities of defence trench approximately 5m deep. High ridge area, 200 m2 land area. Pukehina east side drops away down the cliff. Small ledge area. Possible to exit on the North side and to go gather kai at Newdicks Beach area. The Pa Site joins up with the trench area. This site overlooks the mouth of the Pukehina / Little Waihi estuary. There are pine trees planted here a good 50 cover the ground area. This site is approx. 1 km away from Owihara Pa Site at the driveway It has been interfered with but a recommendation for an excavation to take place should occur. We are unsure who the landowners would be either the Ngawhara or Te Arawa Lakes Trusts.

# Combined Viewpoints

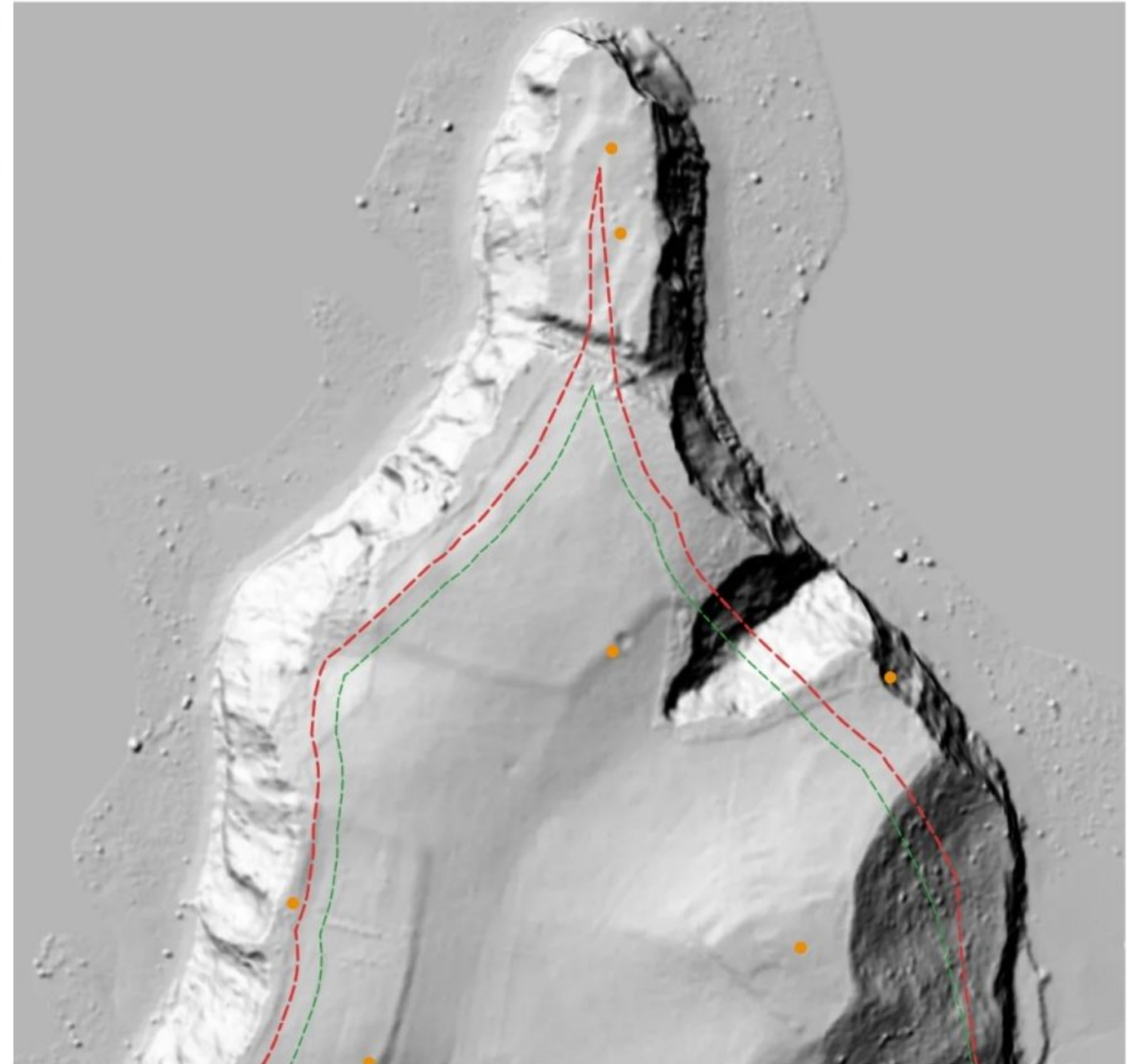




### Indicative Flood Risk (blue)

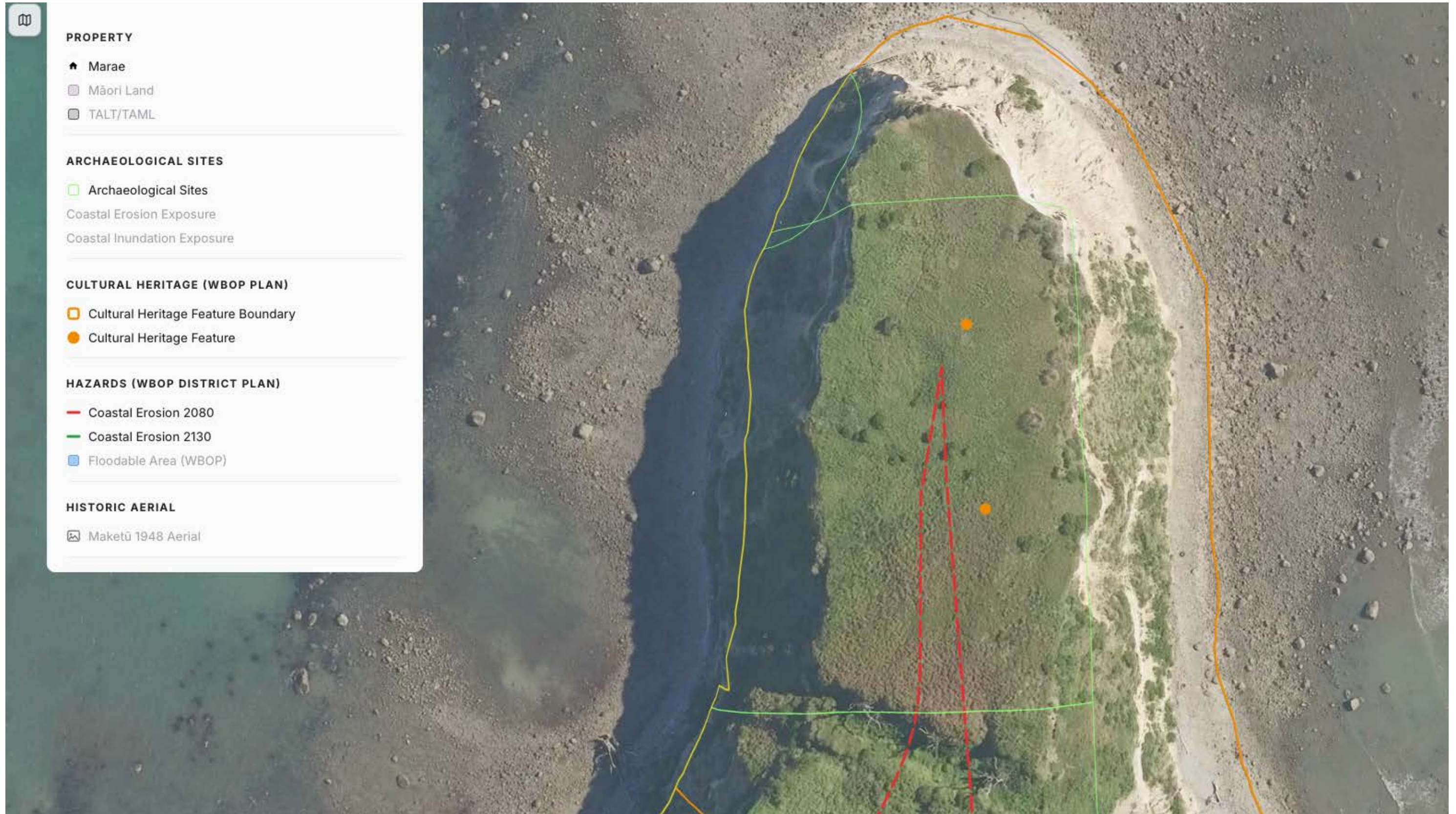


### Indicative Coastal Erosion Risk By 2080 (red) & 2130 (green)



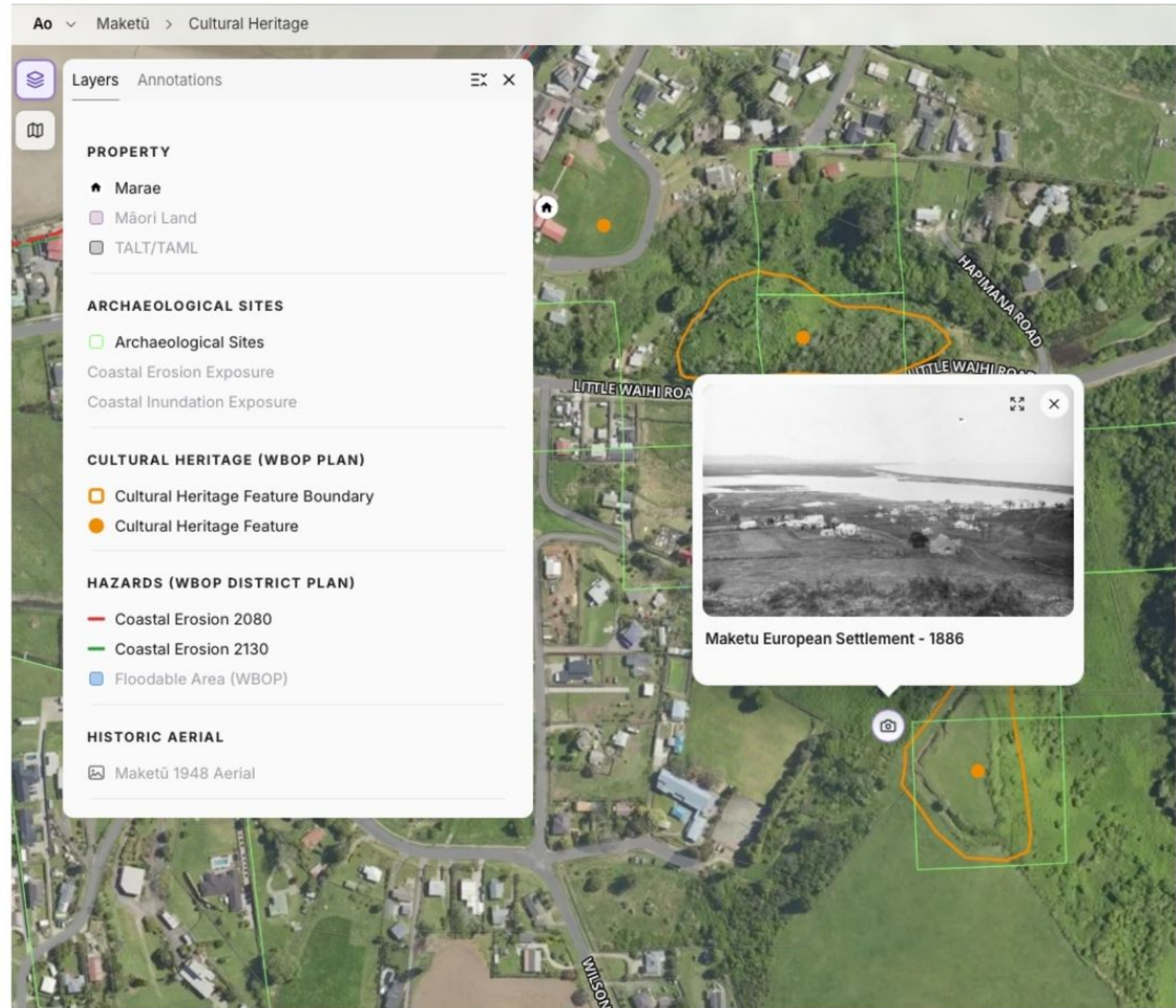
# Risk Screening – Areas at Risk of Erosion







# Future Application Photos / kōrero





## Te Whare Tipu o Maketū

- *whakapapa-led production*
- *catchment-led delivery*
- *whenua-led development*

# Maketu Reuse & Repair Hub

A Resource Recovery and Community Resilience Project for Maketu













# Planning a survivable future for Maketu

An iwi-led, community driven approach to climate change resilience



[www.MaketuClimatePlan.iwi.nz](http://www.MaketuClimatePlan.iwi.nz)