

Mā tō tātou takiwā  
**For our District**

## **Te Puke Community Board**

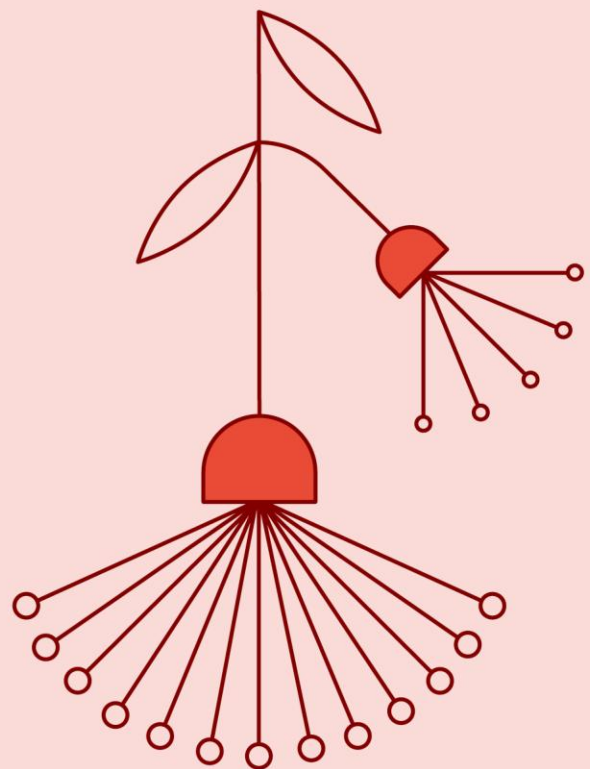
Poari ā Hapori o Te Puke

TPC24-6

Thursday, 21 November 2024, 7.00pm

Te Puke Library and Service Centre,

130 Jellicoe Street, Te Puke



# Te Puke Community Board

## Membership:

<b>Chairperson</b>	Kassie Ellis
<b>Deputy Chairperson</b>	Dale Snell
<b>Members</b>	Karen Summerhays Neena Chauhan Cr Grant Dally Cr Andy Wichers
<b>Quorum</b>	3
<b>Frequency</b>	Eight weekly / Workshops as required

## Role and Purpose of Community Boards:

- To represent, and act as an advocate for, the interests of their communities.
- To consider and report on all matters referred by Council and its Committees, or any matter of interest or concern to the Community Board.
- To maintain an overview of services provided by Council within the community.
- To prepare an annual submission to the Council for expenditure within the community.
- To communicate with community organisations and special interest groups within the community.
- To undertake responsibilities as delegated by Council or its Committees.

## Delegated Functions:

Subject to compliance with Council strategies, policies, plans and legislation:

- To have input into Council and its Committees on issues, services, plans and policies that affect communities within the Community Board Area.
- To provide an effective mechanism for community feedback to Council.
- To receive reports from Council appointees on Council matters relevant to the Community Board.
- To control, expend and monitor funds as allocated by Council.
- To allocate Community Board reserve funds to specific capital non-recurring projects for council assets on council land.

Notice is hereby given that a Te Puke Community Board Meeting will be held in the Te Puke Library and Service Centre, 130 Jellicoe Street, Te Puke on: Thursday, 21 November 2024 at 7.00pm

## Order Of Business

<b>1</b>	<b>Present .....</b>	<b>4</b>
<b>2</b>	<b>In Attendance.....</b>	<b>4</b>
<b>3</b>	<b>Apologies .....</b>	<b>4</b>
<b>4</b>	<b>Consideration of Late Items.....</b>	<b>4</b>
<b>5</b>	<b>Declarations of Interest.....</b>	<b>4</b>
<b>6</b>	<b>Public Excluded Items.....</b>	<b>4</b>
<b>7</b>	<b>Public Forum.....</b>	<b>4</b>
<b>8</b>	<b>Minutes for Confirmation.....</b>	<b>5</b>
8.1	Minutes of the Te Puke Community Board Meeting held on 26 September 2024.....	5
<b>9</b>	<b>Reports .....</b>	<b>16</b>
9.1	Te Puke Community Board – Workshop Notes – November 2024.....	16
9.2	Te Puke Community Board – Chairpersons Report – November 2024.....	21
9.3	Te Puke Community Board – Councillor's Report – November 2024 .....	23
9.4	Te Puke Community Board – Projects and Operations Report – November 2024 .....	28
9.5	Te Puke Community Board – Financial Report October 2024.....	69

**1 PRESENT****2 IN ATTENDANCE****3 APOLOGIES****4 CONSIDERATION OF LATE ITEMS****5 DECLARATIONS OF INTEREST**

Members are reminded of the need to be vigilant and to stand aside from decision making when a conflict arises between their role as an elected representative and any private or other external interest that they may have.

**6 PUBLIC EXCLUDED ITEMS****7 PUBLIC FORUM**

A period of up to 30 minutes is set aside for a public forum. Members of the public may attend to address the Board for up to five minutes on items that fall within the delegations of the Board provided the matters are not subject to legal proceedings, or to a process providing for the hearing of submissions. Speakers may be questioned through the Chairperson by members, but questions must be confined to obtaining information or clarification on matters raised by the speaker. The Chairperson has discretion in regard to time extensions.

Such presentations do not form part of the formal business of the meeting, a brief record will be kept of matters raised during any public forum section of the meeting with matters for action to be referred through the customer relationship management system as a service request, while those requiring further investigation will be referred to the Chief Executive.

## **8 MINUTES FOR CONFIRMATION**

### **8.1 MINUTES OF THE TE PUKE COMMUNITY BOARD MEETING HELD ON 26 SEPTEMBER 2024**

**File Number:** A6533006

**Author:** Ella Logan, Governance Advisor

**Authoriser:** Robyn Garrett, Governance Manager

#### **RECOMMENDATION**

1. That the Minutes of the Te Puke Community Board Meeting held on 26 September 2024 as circulated with the agenda be confirmed as a true and correct record.
2. That the Chairperson's electronic signature be inserted into the confirmed minutes.

#### **ATTACHMENTS**

1. **Minutes of the Te Puke Community Board Meeting held on 26 September 2024**

**MINUTES OF WESTERN BAY OF PLENTY DISTRICT COUNCIL  
TE PUKE COMMUNITY BOARD MEETING NO. TPC24-5  
HELD IN THE TE PUKE LIBRARY AND SERVICE CENTRE, 130 JELICOE STREET, TE PUKE  
ON THURSDAY, 26 SEPTEMBER 2024 AT 7.00PM**

## **1 PRESENT**

Chairperson K Ellis, Member N Chauhan, Member D Snell, Member K Summerhays, Cr G Dally and Cr A Wichers

## **2 IN ATTENDANCE**

C Crow (General Manager Infrastructure Group), R Garrett (Governance Manager) and E Logan (Governance Advisor)

8 members of the public including Deputy Mayor J Scrimgeour, Cr L Rae and Chairperson Maketu Community Board T Hopping

## **3 APOLOGIES**

Nil

## **4 CONSIDERATION OF LATE ITEMS**

---

### **RESOLUTION TPC24-5.12**

Moved: Cr A Wichers

Seconded: Chairperson K Ellis

That the following items be included in the agenda:

9.7 Te Puke Quarry Road Bridge Pedestrian Crossing Proposal

**CARRIED**

---

## **5 DECLARATIONS OF INTEREST**

Members were advised that if they had an interest (actual, potential, pecuniary or non-pecuniary interest) in any item on the agenda, then they must declare this interest and refrain from discussing or voting on this item and were advised to withdraw from the meeting table for the item (As per the Local Authorities (Member's Interest) Act 1968).

- Chairperson K Ellis advised the Board that she had a declaration of financial interest regarding the Made in Te Puke Trust and the Rangioru Sport Club Grant Applications in report 9.4 of the agenda – Te Puke Community Board – Grants Applications – September 2024.
- Member K Summerhays advised the Board that she had a declaration of financial interest regarding the Made in Te Puke Trust Grant Application in report 9.4 of the agenda – Te Puke Community Board – Grants Applications – September 2024 and a declaration of interest regarding the Te Puke Charitable Trust Item within report 9.1 of the agenda – Te Puke Community Board – Chairpersons Report – September 2024.
- Member D Snell advised the Board that she had a declaration of financial interest regarding the Made in Te Puke Trust Grant Application in report 9.4 of the agenda – Te Puke Community Board – Grants Applications – September 2024 and a declaration of interest regarding the Te Puke Charitable Trust Item within report 9.1 of the agenda – Te Puke Community Board – Chairpersons Report – September 2024.
- Cr G Dally advised the Board that he had a declaration of financial interest regarding the Te Ara Kahikatea Incorporated Grant Application in report 9.4 of the agenda – Te Puke Community Board – Grant Applications – September 2024.

## 6 PUBLIC EXCLUDED ITEMS

Nil

## 7 PUBLIC FORUM

### **SUE MATTHEWS – VARIOUS TOPICS**

#### **Graffiti Cleaning**

- The graffiti had been clean up through the alleyway across from Fairhaven School.
- Before Fairhaven Fireworks Gala, both sides of the alleyway would be painted.

#### **Heritage Hub**

- The Heritage Hub would follow the same policy and procedures as the heritage hub in Katikati.
- Funding of \$50,000 had been sourced, however, \$100,000 was required to get the project up and running.
- Once the Hub had been up and running for three years, there would be a request to put it into the Councils Museums funding rounds.
- The end goal was that the Hub would be moved into the Te Puke Library.

### **Paengaroa Spring Festival**

- The Paengaroa Spring Festival was being held on 9 November 2024 from 9.00am to 4.00pm at the Paengaroa ED Rugby Field.
- This was an opportunity to engage with the community on the Community Development Plan.
- The Community Development Plan was led by the community in partnership with Council.

Mike Jones was present to speak to his Te Ara Kahikatea Incorporated Grant Application:

- Mr Jones noted that the Te Ara Kahikatea walkway connection project was supported by Councils Reserves and Facilities Team.

The General Manager Infrastructure noted that staff would provide guidance to the Te Ara Kahikatea Incorporated to ensure the stairs built were up to the safety standards.

### **VARIOUS SPEAKERS – RAISED TABLE AND PEDESTRIAN CROSSING CAMERON ROAD**

Mr and Mrs Gibney and Mrs Abraham were in attendance to seek further information about the raised table and pedestrian crossing on Cameron Road. They noted the below points:

#### **Sheryl and Hugh Gibney**

- Mrs Gibney raised concern about a raised table pedestrian crossing and noted that she was opposed to the a raised table pedestrian crossing but was in support of a flat pedestrian crossing.
- Mr Gibney believed that a raised pedestrian crossing would not increase the safety of pedestrians.

#### **Judie Abraham**

- Mrs Abraham was in support of a pedestrian crossing, subject to it being flat rather than raised.
- Mrs Abraham noted that her neighbours that she had spoken to were opposed to a raised table pedestrian crossing.

### **MEMBER K SUMMERHAYS – TRESS IN TE PUKE PROJECT**

Member K Summerhays was present in Public Forum to provide an update on the Trees in Te Puke project. She notes the below points:

- Member K Summerhays provided a citizen report to the Board (**Tabled Item 1**).
- Members were wanting to work with Council staff to obtain proper care of the trees within the report and get the schedule updated.
- The Tree Register was within Councils District Plan.



## 8 MINUTES FOR CONFIRMATION

### 8.1 MINUTES OF THE TE PUKE COMMUNITY BOARD MEETING HELD ON 1 AUGUST 2024

#### RESOLUTION TPC24-5.13

Moved: Cr G Dally

Seconded: Member N Chauhan

That the Minutes of the Te Puke Community Board Meeting held on 1 August 2024 as circulated with the agenda be confirmed as a true and correct record subject to the below amendment being made:

That the following amendment be made to item **9.2**:

change the word AKORN with ACORN as the spelling is incorrect.

That the Chairperson's electronic signature be inserted into the confirmed minutes.

**CARRIED**

## 9 REPORTS

### 9.1 TE PUKE COMMUNITY BOARD - CHAIRPERSON'S REPORT - SEPTEMBER 2024

The Board considered a report from the Chairperson. The report was taken as read, with further discussion on the below:

Key points:

- It was noted that the Peter Boomen's surname was spelt incorrectly within the report.

#### The Installation of the Powered Christmas Tree Site

- The installation of the Christmas was scheduled to be completed within four-six weeks time.
- The Board requested the correct lock for the electrical cabinet at the site.
- There was room in the budget to plant a tree that would replace the tree that had been removed from the site. This tree would be planted at the time of installation, unless advised otherwise by Councils arborist.

The Te Puke Community Trust

- It was recommended that Council staff worked with the trustees of the Te Puke Community Trust to understand the role, and what it would look like for the Board to take on the role.

**RESOLUTION TPC24-5.14**

Moved: Cr A Wichers

Seconded: Member D Snell

1. That the Chairperson's report dated 26 September 2024 titled "Te Puke Community Board – Chairperson's Report – September 2024" be received.

**CARRIED**

**RESOLUTION TPC24-5.16**

Moved: Member D Snell

Seconded: Member N Chauhan

2. That the Te Puke Community Board approves a budget of \$10,000 from the Reserves Account to contribute to the costs of the installation of a Disc Golf Course at Donovan Park, subject to the project being completed before the end of 2025.

**CARRIED**

**RESOLUTION TPC24-5.17**

Moved: Member K Summerhays

Seconded: Member D Snell

3. That the Te Puke Community Board approves a budget of \$1,293.75 from the Contingency Account for the installation of public Wi-Fi in Heritage Plaza upon the completion of the Heritage Plaza refurbishment.

**CARRIED**

**RESOLUTION TPC24-5.18**

Moved: Chairperson K Ellis

Seconded: Member D Snell

4. That the Te Puke Community Board approves a budget of \$4,650 from the Rooding Account for the design and installation of a new bus shelter at 188 Manoeka Road.

---

**CARRIED**

---

**RESOLUTION TPC24-5.19**

Moved: Chairperson K Ellis

Seconded: Member N Chauhan

That the Te Puke Community Board approves a budget of up to \$21,000 from the Reserves Account for the installation of a BBQ at the Ben Keys Playground, subject to approval from Councils Roding Team.

---

**CARRIED**

---

**9.2 TE PUKE COMMUNITY BOARD - COUNCILLOR'S REPORT - AUGUST 2024**

The Board considered a report from Councillor Wichers. The report was taken as read, with further discussion on the below:

- It was noted that construction on No 1 Road was scheduled to begin 1 October 2024.
- 

**RESOLUTION TPC24-5.20**

Moved: Cr A Wichers

Seconded: Chairperson K Ellis

1. That the report from Councillor Wichers dated 26 September 2024 titled 'Te Puke Community Board – Councillor's Report – August 2024' be received.

---

**CARRIED**

---

**9.3 TE PUKE COMMUNITY BOARD - HERITAGE PLAZA DEVELOPED DESIGN - SEPTEMBER 2024**

The Board considered a report from the Governance Advisor. The report was taken as read, with further discussion on the below:

- The detailed design would be socialised with the Board once completed.
- 

**RESOLUTION TPC24-5.21**

Moved: Member K Summerhays

Seconded: Member D Snell

1. That the Governance Advisor's report dated 26 September 2024, titled 'Te Puke Community Board – Heritage Plaza Developed Design – September 2024', be received.
2. That the Te Puke Community Board approves the Heritage Plaza Developed Design as shown at **Attachment 1** and **2**, and to progress the Heritage Plaza project into the detailed design phase.

**CARRIED**

#### **9.4 TE PUKE COMMUNITY BOARD – GRANT APPLICATIONS – SEPTEMBER 2024**

The Board considered a report from the Governance Advisor. The report was taken as read, with further discussion on the below items.

Chairperson K Ellis declared a financial interest in the Rangioru Sports Club Grant Application and took no part in the discussion or voting of this application.

Cr G Dally declared a financial interest in the Te Ara Kahikatea Incorporated Grant Application and took no part in the discussion or voting on this application.

Key points:

- The Made in Te Puke Grant Application had been withdrawn as the funding was no longer required.
- The Board noted that the grant application for 247 Health and Fitness could not be accepted as it did not meet the grant application criteria.
- The Board noted that the grant application for Parent to Parent could not be accepted as the application was too broad to be able to clearly identify how it aligned with the Boards strategic priorities. It was recommended that future applications be specific and detailed.

#### **RESOLUTION TPC24-5.22**

Moved: Chairperson K Ellis

Seconded: Member D Snell

1. That the Governance Advisor's report dated 26 September 2024 titled 'Te Puke Community Board – Grant Applications – September 2024' be received.

**CARRIED**

#### **RESOLUTION TPC24-5.23**

Moved: Member D Snell

Seconded: Chairperson K Ellis

2. That the Te Puke Community Board approves the grant application from Community Patrols of New Zealand (Te Puke branch) for \$1,000 to cover the costs of fuel, maintenance, and insurance of Patrol vehicles. This grant will be funded from the Te Puke Community Board Grants Account, subject to all accountabilities being met.

**CARRIED**

---

### RESOLUTION TPC24-5.24

Moved: Cr G Dally

Seconded: Cr A Wichers

3. That the Te Puke Community Board approves the grant application from the Rangiora Sports Club for \$1,200 to contribute to the costs of three murals located at the fence line and back carpark. This grant will be funded from the Te Puke Community Boards Account, subject to all accountabilities being met.

**CARRIED**

---

### RESOLUTION TPC24-5.25

Moved: Cr A Wichers

Seconded: Member N Chauhan

4. That the Te Puke Community Board **approves** the grant application from Te Ara Kahikatea Incorporated for \$2,500 to contribute to the costs of a new walkway connection. This grant will be funded from the Te Puke Community Boards Grants Account, subject to all accountabilities being met.

**CARRIED**

---

### RESOLUTION TPC24-5.26

Moved: Cr A Wichers

Seconded: Chairperson K Ellis

5. That the Te Puke Community Board does not approve the grant application from 247 Health and Fitness as it does not meet the grant application criteria.
6. That the Te Puke Community Board does not approve the grant application from Parent to Parent Coastal Bay of Plenty as the grant application was too broad to be able to clearly identify how it aligned with the Boards strategic priorities. It was recommended that future applications be specific and detailed.

**CARRIED**

---

## 9.5 TE PUKE COMMUNITY BOARD – PROJECTS AND OPERATIONS REPORT – SEPTEMBER 2024

The Board considered a report from the Governance Advisor. The report was taken as read, with further discussion on the below items:

- The raised table pedestrian crossing had been proven to reduce speed, however, a flat pedestrian crossing would achieve a similar outcome through a different mitigation strategy.
- It was noted that the establishment of Resource Recovery Centres project needed a rethink as the current approach was not helping the project progress.

---

### RESOLUTION TPC24-5.27

Moved: Cr G Dally

Seconded: Chairperson K Ellis

1. That the Governance Advisor's report dated 26 September 2024 titled 'Te Puke Community Board – Projects and Operations Report – August 2024' be received.
2. That the Te Puke Community Board approves an additional budget of \$30,000 from the Roading Account for the safety improves on Cameron Road outside of Te Puke Intermediate, subject to the pedestrian crossing being flat.
3. That the Te Puke Community Board approve to release the unspent funds from outstanding operational commitments from the following resolutions into the Reserves Account:
  - TPC21-2.7 - \$62,030
  - TPC212.7 - \$58,691
  - TPC24 – 3.12 - \$4,195

**CARRIED**

---

## 9.6 TE PUKE COMMUNITY BOARD – FINANCIAL REPORT AUGUST 2024

The Board considered a report from the Financial Business Partner. The report was taken as read.

---

### RESOLUTION TPC24-5.28

Moved: Member K Summerhays

---

Seconded: Chairperson K Ellis

1. The Financial Business Advisor’s report dated 26 September 2024 titled ‘Te Puke Community Board – Financial Report August 2024’ be received.

**CARRIED**

**9.7 TE PUKE QUARRY ROAD BRIDGE PEDESTRIAN CROSSING PROPOSAL**

The Board considered a report from the Governance Advisor. The report was taken as read.

**RESOLUTION TPC24-5.29**

Moved: Chairperson K Ellis

Seconded: Member D Snell

1. That the Governance Advisors report dated 26 September 2024 titled ‘Te Puke Quarry Road Bridge Pedestrian Crossing Proposal’ be received.
2. That the Te Puke Community Board approves to spend up to \$9,000 from the Roding Account on the feasibility study of adding a pedestrian bridge to the Te Puke Quarry Road Bridge.

**CARRIED**

**The Meeting closed at 9.28pm**

**Confirmed as a true and correct record at the Te Puke Community Board meeting held on 21 November 2024.**

.....

Chairperson K Ellis

**CHAIRPERSON**

## 9 REPORTS

### 9.1 TE PUKE COMMUNITY BOARD – WORKSHOP NOTES – NOVEMBER 2024

**File Number:** A6532991

**Author:** Ella Logan, Governance Advisor

**Authoriser:** Robyn Garrett, Governance Manager

#### EXECUTIVE SUMMARY

1. The Te Puke Community Board workshop notes from 05 September 2024 and 30 October 2024 have been provided as **Attachment 1** and **2** for transparency.

#### ATTACHMENTS

1. **Te Puke Community Board – Workshop Notes – 5 September 2024**  
2. **Te Puke Community Board – Workshop Notes – 30 October 2024**  



**Te Puke COMMUNITY BOARD  
WORKSHOP**

**DATE:** Thursday, 05 September 2024 at 6.00pm

**HELD:** Te Puke Board Room

**MEMBERS PRESENT:** Chairperson K Ellis, K Summerhays, D Snell, Cr G Dally and Cr A Wichers

**APOLOGIES:** N Chauhan

**STAFF IN ATTENDANCE** S Prendergast (Transportation Area Engineer), C McLean (Director Transportation), E Logan (Governance Advisor)

Topic	Discussion	Action
<b>Heritage Plaza</b>	<ul style="list-style-type: none"> <li>The Project Engineer Transportation provided the Board with an update on the progress of the developed design.</li> </ul>	<ul style="list-style-type: none"> <li>The Governance Advisor would organise an online meeting between the Board and the Landscape Architect.</li> <li>The Landscape Architect would present the developed design to the Board.</li> </ul>
<b>Cameron Road Safety Improvements</b>	<ul style="list-style-type: none"> <li>The Board discussed a non raised pedestrian crossing as an alternative option for the project.</li> <li>The Project Engineer Transportation provided the Board with an updated cost estimate for the raised table pedestrian crossing.</li> </ul>	<ul style="list-style-type: none"> <li>The Project Engineer Transportation would contact the Principle of Te Puke Intermediate to discuss the onsite hui.</li> <li>The Governance Advisor would provide the Board with a letter to</li> </ul>

Te Puke Community Board - Workshop Notes – 05 September 2024

	<ul style="list-style-type: none"> <li>The Board would have an onsite hui on Wednesday 18 September at 5:30pm outside the Intermediate with the residents of Cameron Road.</li> </ul>	provide the Cameron Road residents with ahead of the onsite hui.
<b>Main Street Flags</b>	<ul style="list-style-type: none"> <li>Councillor Dally presented concept designs to the Board, and the Board provided their feedback.</li> </ul>	<ul style="list-style-type: none"> <li>Councillor Dally would amend the designs to incorporate the Boards feedback.</li> <li>Councillor Dally would bring estimated costings back to the Board at its next formal meeting.</li> </ul>
<b>Bus Shelters</b>	<ul style="list-style-type: none"> <li>The Board discussed the renewal of the collapsed bus shelter in the Manoeka village.</li> </ul>	<ul style="list-style-type: none"> <li>The Chairperson would discuss project with MenzShed Te Puke to enquire about their appetite for the project.</li> <li>Councillor Dally would get a quote for the works from a local builder.</li> </ul>
<b>Town Signs</b>	<ul style="list-style-type: none"> <li>The Board wanted to upgrade the Te Puke Kiwifruit Capital Signs on the east and west entrances of the town.</li> </ul>	<ul style="list-style-type: none"> <li>The Chairperson would discuss the design and costing with Epic.</li> </ul>
<b>Ben Keys Park BBQ Installation</b>	<ul style="list-style-type: none"> <li>The Board raised concerns about the cost estimate that had been provided by staff.</li> </ul>	N/A
<b>Disc Golf Course at Donovan Park</b>	<ul style="list-style-type: none"> <li>The Board discussed contributing funds to the help cover the costs of the installation of the Disc Golf Course at Donovan Park.</li> </ul>	N/A
<b>George Street Footpath Extension</b>	<ul style="list-style-type: none"> <li>It had been raised from members of the community that a new footpath at George Street to improve safety of pedestrians.</li> </ul>	<ul style="list-style-type: none"> <li>The Project Engineer Transportation to provide the Board with an estimated cost for this project.</li> </ul>

Te Puke Community Board Workshop Notes – 05 September 2024

	<ul style="list-style-type: none"><li>• The Board wanted to investigate the feasibility of this project.</li></ul>	
--	--	--

The workshop closed at 8.15pm.

**Te Puke COMMUNITY BOARD  
WORKSHOP**

<b>DATE:</b>	Wednesday, 30 October 2024 at 6.30pm
<b>HELD:</b>	Te Puke Board Room
<b>MEMBERS PRESENT:</b>	Chairperson K Ellis, D Snell, N Chauhan, Cr G Dally and Cr A Wichers
<b>APOLOGIES:</b>	K Summerhays
<b>STAFF IN ATTENDANCE</b>	E Logan (Governance Advisor)

**DIRECTION SOUGHT FROM WORKSHOP**

- The Governance Advisor would provide the Board with an update on the estimated completion dates for current projects.
- The Governance Advisor would discuss the level of service within the CBD with the General Manager Infrastructure Services and relay this information back to the Board.
- The Governance Advisor would organise an onsite hui with Board and representatives from the Squash Club at Landscape Road to discuss the new footpath.
- The Governance Advisor would request an update from Council staff regarding the removal of the tree outside of the War Memorial Hall.

The workshop closed at 7.52pm.

Te Puke Community Board - Workshop Notes – 30 October 2024

**9.2 TE PUKE COMMUNITY BOARD – CHAIRPERSONS REPORT – NOVEMBER 2024****File Number:** A6517387**Author:** Kassie Ellis, Community Board Chairperson**Authoriser:** Cedric Crow, General Manager Infrastructure Services**EXECUTIVE SUMMARY**

1. The purpose of this report is for the Te Puke Community Board’s Chairperson to provide the Board with information and updates on events and matters within the community.

**RECOMMENDATION**

1. That the Chairperson’s report dated 21 November 2024 titled “Te Puke Community Board – Chairpersons Report – November 2024’ be received.

This Chair’s report has been written to inform our community of upcoming projects and gain an understanding of some reoccurring issues. The Te Puke Community Board serves the best interest of the community, and we will continue to be as open as possible with our community.

We wish our community a very Merry Christmas and Happy New Year. We will see you all again for 2025.

**The Te Puke Kiwifruit Capital of the World Signage**

The Te Puke Community Board is collaborating with Evocom LTD and Council staff to provide fresh, new and innovative signage to replace the current Te Puke Kiwifruit Capital signs placed at the north and south end of Jellicoe Street Te Puke. We aim to have a concept design ready for January 2025.

**Possible appointment of Community Board members to the Te Puke Community Fund Distribution Panel**

As a board we have a unique opportunity to be involved with providing the community with a valuable funding initiative moving forward, in conjunction with the Acorn Foundation. The Board will have the opportunity to appoint members to the Fund Distribution Panel to assist with local funding decisions and will ask staff to provide advice on the best way for the Board to do this according to its Terms of Reference.

**Citizen Tree Report**

The Citizen Tree Report was tabled at the last formal meeting. The Board are requesting that staff provide a response to this report.

### Level of Service and On-going Maintenance of Jellicoe Street

Staff have confirmed that the following actions will be taking place to improve the state of the CBD:

- Council staff are looking at renewing the contract for the garden maintenance at present and will provide the board with further detail on this when it becomes available.
- Regarding the gum on the footpath, Council have trailed a few things in the past to remove the gum, however, have been unsuccessful with the results. It is a difficult situation as the pressure of the water blaster on the footpath will remove all the grout around the bricks and create a footpath where the bricks have moved and are unsafe. Council is still working through options in this space.
- The gutters have been cleaned through the Heritage Walkway and the sweeping has also been completed.
- Council have discussed the quality of the litter collection/pick up with the contractors.
- Council is working with contractors to confirm the pricing to have graffiti removed and are hopeful that this will happen prior to Christmas.
- Council will remove the graffiti on the bins throughout the CBD. However, repairs will only be undertaken to bins as and when required. If there are specific bins that are of immediate concern, Council staff have encouraged people to log Antenno requests and include a photo of the bin.
- Council's Reserves Team have worked to improve the condition of the Public Toilets on Commerce Lane. It was flagged by staff that logging a Service Request for this type of issue is the best way to ensure Council is aware of the problem.
- It is not within Council's level of service to refresh faded streetlamps or street signs. If this is something that the board wish to fund, Council staff can confirm the scope and provide the board with the cost estimate.
- Council encourage Service Requests or Antenno Requests to be logged for any repairs that need to be done, including footpath repairs, water fountains that aren't functioning properly, etc. These issues then get passed on to the correct person who will organise contractors to fix them.

### Te Puke Memorial Hall – Private Carpark/Leasing Update

Council's Legal Property Team has advised that Council could enter into a lease agreement with the property owner to use their land, however, this could be at a cost. It is anticipated that it would be the board that would fund this project rather than Council itself. The cost involved in this could include on-going lease fees associated with this work. Unless the carpark could be a paid car park in which Council can recoup costs, the feasibility of leasing the land for car parking is not there.

**9.3 TE PUKE COMMUNITY BOARD – COUNCILLOR’S REPORT – NOVEMBER 2024****File Number:** A6517482**Author:** Grant Dally, Councillor**Authoriser:** Cedric Crow, General Manager Infrastructure Services**EXECUTIVE SUMMARY**

1. The purpose of this report is for Councillor Dally to provide the Board with updates on the items listed below.

**RECOMMENDATION**

1. That the report from Councillor Dally dated 21 November 2024 titled ‘Te Puke Community Board – Councillor’s Report – November 2024’ be received.

**Election of new Maketu Community Board Member Brett Waterhouse**

Congratulations to Brett on his by-election win. I spent a bit of time with Brett, after his attendance at our Community Ward Forums in Paengaroa and Maketu, looking at drainage, roading, footpath, and kerb and channel issues that he raised at the forums. I also sought his advice on proposed speed limits in Maketu and surrounds for the Speed Limit Review. He’s clearly invested in fixing local problems and now he’s in a good place to make progress with a more direct line of communication to Councillors and staff.

**Annual Plan 2025–2026**

The process to prepare our Annual Plan 2025–2026 kicked off on 12 November 2024 with a scoping workshop to identify key issues or matters that may impact the Annual Plan.

Year 1 of Western Bay of Plenty District Council’s Long-Term Plan landed with a 13.47% average rates increase. The Proposed rates increase for Year 2 is 10.13%. Across the country Councils have adopted historically high rates increases through their Long-Term Plans. This has been a wake-up call for the sector and put the spotlight on Local Government.

We’ve had clear messages from the Coalition Government’s Prime Minister Christopher Luxon and Minister for Local Government Simeon Brown that change is necessary. We have been told to “concentrate on the basics, cut back on the nice-to-haves”.

This guidance may have consequences for projects within our Long-Term Plan, however, this is yet to be determined. There is no doubt that we are assessing priorities and endeavor to explore all avenues to try and reduce the projected Year 2 rates increase.

## Local Waters Done Well

Change has been coming for a few years now with the former Labour Government's controversial 'Three Waters Reform' legislation (later renamed 'Affordable Waters Reform') now history. Local Waters Done Well has re-imagined the framework by addressing the divisive issues of asset ownership, co-governance, and not allowing Councils to determine their own fate.

How we manage our 3 Waters, from both an operational viewpoint and a financial and organisational aspect, is currently being reevaluated. This reevaluation is based on the direction given within the Local Government 'Water Services Preliminary Arrangements' Act 2024, that was enacted in September 2024. The Act requires Councils to develop Water Services Delivery Plans by 3 September 2025. These plans must outline future water services delivery arrangements, investment and revenue sufficiency, and a commitment to an implementation plan. The funding and financing (ability to borrow money) is obviously a key factor and a balance sheet separation for the 3 Waters activities is fundamental.

The Local Government 'Water Services Preliminary Arrangements' Act 2024 will be followed by 'Local Waters Done Well' (LWDW), which is the Coalition Government's plan that outlines the final settings for the water services delivery system and the water services regulatory system. This new legislation is expected to provide certainty over economic and water quality regulation, and what water service delivery model Councils will be able to choose from; whether its Council-owned water organizations and/or consumer trusts.

Unfortunately, modelling has shown that the costs to ratepayers is likely to increase over time due to the increased compliance, investment and implementation costs resulting from the new legislation. Ultimately, it is all about providing assurance of water quality by ensuring we have the necessary financial and organizational capability to provide and maintain safe, fully consented water supplies and wastewater treatment plants. It is also important that our stormwater systems must be fit for purpose to cope with increased demands from heavy rain events.

For a full analysis of the scoping work our Council has undertaken so far refer to the report beginning on page 200 in the 26 September 2024 Council agenda. Link here:

[HTTPS://WESTERNBAYOFPLENTY.INFOCOUNCIL.BIZ/OPEN/2024/09/CL\\_20240926\\_AGN\\_28\\_28\\_AT.PDF](https://westernbayofplenty.infocouncil.biz/open/2024/09/cl_20240926_AGN_28_28_AT.PDF)

## Representation Review

On 20 November 2024, Council will adopt its final Representation Review proposal. At the time of writing this report, Council have reconsidered the initial proposal, and other possibilities, all based on what we heard through the 77 focus groups, 17 oral submissions, and 550 written submissions.



I would like to take this opportunity to thank the Te Puke Community Board and the other Community Boards across the district for their comprehensive submissions to the initial proposal.

We heard a clear message from submitters that there was support for Community Boards. The feedback outlined that Community Boards are valued within the district, and their structure can provide the opportunity for an intermediary layer of local governance between our communities and the Councillors.

However, having a large percentage of our population within the Kaimai and Maketu-Te Puke Wards not represented by Community Boards has been a notably inconsistency.

The final proposal will be subject to appeals and objections. Public notice will be given in relation to this appeal and objection period, which will take place between 22 November 2024 and 13 December 2024. If there are no appeals or objections, then the proposal will automatically become final.

#### Next Steps:

- Council meeting 20 November 2024 – adoption of final proposal
- 22 November to 13 December 2024 – Local Government Commission appeal/objection period
- 14 December 2024 – Final proposal proceeds if no appeal/objections
- 18 February – Local Government Commission Hearing (if required)
- Annual Plan adopt for consultation (indicatively March 2025) – inclusive of any related rating proposals for community boards.
- Local Government Commission determination (if required) – TBC

### **Te Puke Spatial Plan Review**

I attended the Te Puke Spatial Plan Workshop on 22 October in the Te Puke Memorial Hall. There was a good turnout of stakeholders from across the spectrum of business, environment, government departments, industry, local governance, social, tangata whenua, and youth. Broad themes covered in the roundtable engagement included: Community, Environment, Housing, and Transport.

It was interesting to hear the same concerns and issues raised from each focus group as we cycled around the 4 tables and reported back to the wider group after each session. Next steps are summarizing the feedback and developing the Draft Te Puke Spatial Plan before going out for formal consultation on the plan around March 2025.

### **Maketu-Te Puke Ward Community Forum Expo**

We had a great turnout at the Te Puke-Maketu Ward Community Forum Expo held on 25 September at The Orchard Church. This format focused on providing project information

and updates to our communities, with Council staff and elected members present to answer any questions. The format of the event went down well with the public attendees.

While the attendance was no doubt boosted by the interest in the No.1 Rd Rehabilitation project, it was a pointer to the fact that locals do like to be consulted and enjoy having the opportunity to ask questions. I look forward to the remaining Ward Community Forums in this triennium.

### **Transportation Update**

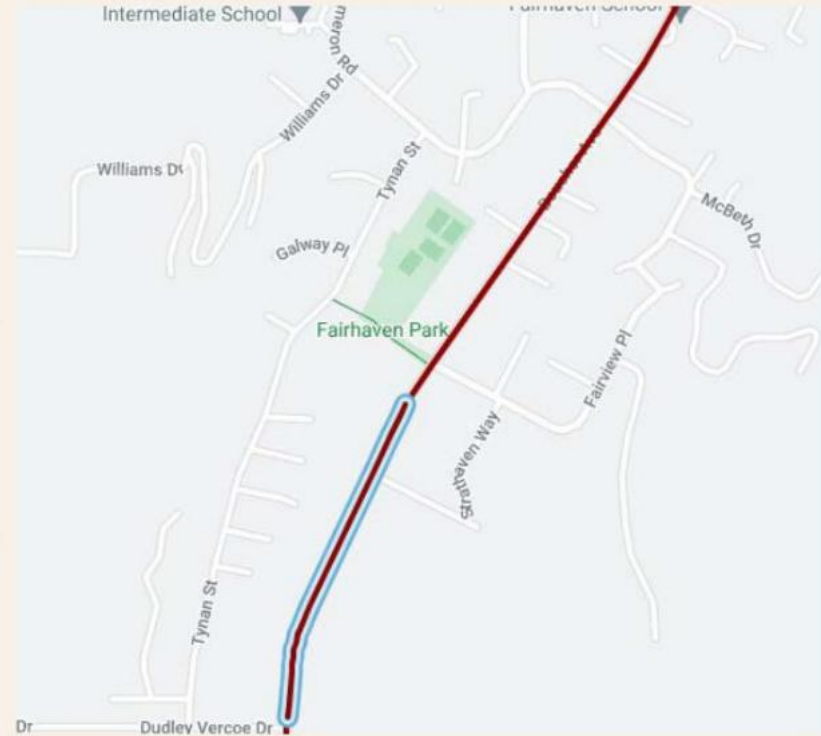
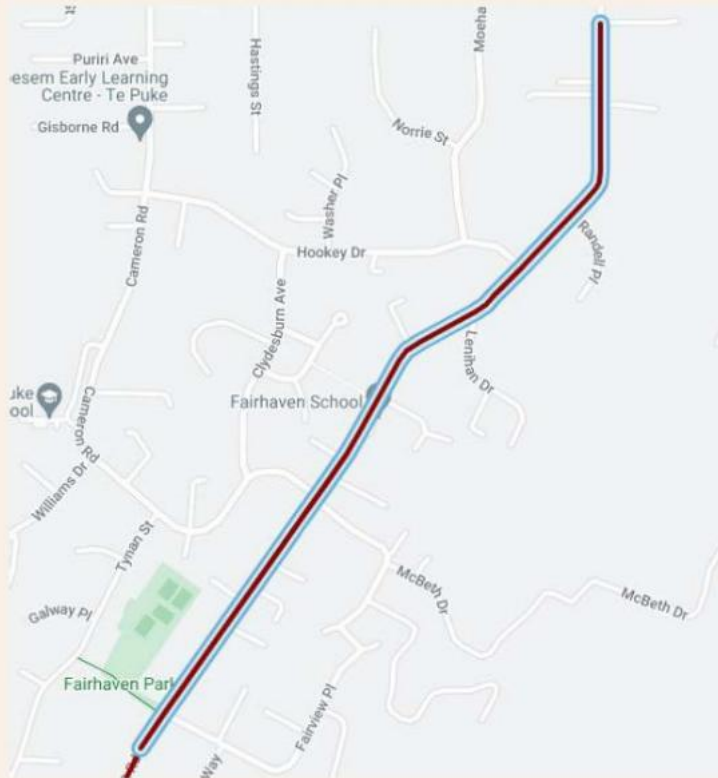
Work began on Stage 1 of the No.1 Road rehab/seal widening project on 7 October 2024 and is scheduled to finish on 18 March 2025. While the machinery was not evident initially, work is now in full swing and good progress is being made. Feedback from locals is that while the work is disruptive, they are very appreciative that the work is underway, and they can see an end to the misery of living with a sub-standard road in sight. Stage 1 of the rehabilitation has a project cost is \$3.8m.

The No.4 Rd Bridge replacement project was due to begin on 29 October 2024 and finish on 2 May 2025. The new single span bridge will be built on the downstream side of the original bridge, this allows the Bailey Bridge to continue providing temporary access for the locals. The cost of this project is \$6.6m.

Also scheduled in the Transportation Capex Program is a rehab package for Boucher Ave Route Position (RP) 0.872 to RP 2.235 and No.2 Road RP 0.0 to RP 0.441. The Start and Finish dates for this project are yet to be confirmed but will have a project cost of \$3.6m.

# Transportation – Rehab Package 01

**Boucher Avenue (RP 872 – 2235)    No 2 Road (RP 0 – 441)**



## 9.4 TE PUKE COMMUNITY BOARD – PROJECTS AND OPERATIONS REPORT – NOVEMBER 2024

**File Number:** A6513072

**Author:** Cedric Crow, General Manager Infrastructure Services

**Authoriser:** John Holyoake, Chief Executive Officer

### EXECUTIVE SUMMARY

1. The purpose of this report is to provide the Te Puke Community Board with an overview of the Community Board Infrastructure Projects currently being undertaken in the Te Puke area as well as to provide an overview of engagement and operational matters from across the Council that relate to the Te Puke Community Board.

### RECOMMENDATION

1. That the General Manager Infrastructure Services's report dated 21 November 2024 titled 'Te Puke Community Board – Projects and Operations Report – November 2024' be received.
2. That the Te Puke Community Board approve a budget of up to \$15,000 from the Roading Account for the installation of a standard footpath on George Street to improve the safety of pedestrians.
3. That the Te Puke Community Board approve the Landscape Road Footpath Design Option 1 (as shown in **Attachment 1**), and to progress to the footpath installation phase.  
  
OR
4. That the Te Puke Community Board approve the Landscape Road Footpath Design Option 2 (as shown in **Attachment 2**), and to progress to the footpath installation phase.

### COUNCIL LED PROJECTS

Work has been done to create an online engagement platform 'Your Place Tō wāhi' which communities can access to find out information on Council-led projects in their area. For Te Puke, this includes the Te Puke Spatial Plan, No.1 Road Rehabilitation, No.4 Road Bridge, Rangiuuru Business Park, and Local Water Done Well.

### Your Place Tō wāhi

In response to the successful creation of Western Bay's 12 communities (through the recent Long-Term Plan and District Plan Review processes), and community desire for

real-time updates and visible deliver of mahi, Council has updated its existing 'Have Your Say Western Bay' online community engagement platform to 'Your Place Tō wāhi'.

Your Place Tō wāhi serves as a holistic, one-stop digital hub where communications about key projects, community details, and Council services are seamlessly integrated with community consultation efforts. The dual approach not only clarifies Council's role and contributions but also enhances the community pride and strengthens community connections.

This has been achieved through the creation of 12 standalone 'community hubs' allowing for Council to prioritise and manage projects and community updates directly within their respective communities rather than on Council's main website. Doing so allows a wider understanding of what's happening in their community and provide a layer of education about Council's role in the community, while allowing the opportunity to add in community engagement tools such as quick polls, blogs, ideas boards and surveys all in one place.

### Communities

- Waihi Beach/Athenree
- Katikati/Aongatete
- Matakana Island
- Ōmokoroa
- Whakamarama
- Te Puna/Minden
- Omanawa/Lower Kaimai
- Oropi/Ohauti/Pyes Pa
- Te Puke
- Paengaroa
- Pukehina/Pongakawa
- Maketu

By updating this platform, we believe that we can foster a deeper connection between Council and the community through accessible, meaningful, and effective communications and engagement. This approach will make Council more understood and supported, allowing us to better serve the community efficiently.

### What success looks like

- **Neighbourhood recognition and engagement:** increased levels of community engagement – digital and kanohi ki te kanohi – and subscriptions to our 'stay informed' widget, allowing people to receive regular updates and actively participate in their specific neighbourhoods and projects.

- **Digital footprint expansion:** a consistent rise in impressions and click-through rates not only to the main Your Place Tō wāhi page but also to the unique URLs dedicated to each of the 12 communities and their specific project pages.
- **Community pride and trust:** people take pride in their local areas and consistently turn to Your Place Tō wāhi as their primary resource for local information – deepening their trust and connection with the Council.

### Timing

Your Place Tō wāhi was launched 17 October 2024: [Your Place Western Bay of Plenty](#)

## ROADING ACCOUNT

TE PUKE COMMUNITY BOARD ROADING CURRENT ACCOUNT						
AS AT 31 AUGUST 2024				TE PUKE COMMUNITY BOARD 2025 \$		
<b>Current Account:</b>						<b>STATUS</b>
<b>Current Account Opening Balance 1 July 2024</b>				1,268,300		<i>Pending finalisation of 2024 financial results</i>
Interest 2025						<i>Pending finalisation of 2024 financial result</i>
Allocation for 2025						<i>No allocation for the 2025 financial year</i>
<b>Subtotal</b>				<b>1,268,300</b>		
<b>Less: Completed Projects</b>		<b>Total Committed</b>	<b>Total project spent</b>	<b>Spent in 2025 financial year</b>	<b>Balance remaining</b>	<b>Status</b>
TPC21-2.7	<i>Jellicoe street - industrial service lane footpath project - that the te puke community board approve the community roading programme and order of priority of the projects listed: "2. King Street Vet Clinic / Jellicoe Street Industrial Service Lane, \$120,000, priority 4"</i>	120,000	(61,309)		<b>58,691</b>	<i>Completed: Can be closed off and left over funds can go back into the reserves account.</i>
TPC21-2.7	<i>Cycleway Footpath extensions to improve connectivity (Stock Road footpath) - That the Te Puke Community Board approve the Community Roding Programme and Order of priority of the projects listed: "6. cycleway Footpath Extensions to Improve Connectivity, \$100,000"</i>	100,000	(37,970)		<b>62,030</b>	<i>Completed: Can be closed off and left over funds can go back into the reserves account.</i>
TPC24-3.12	<i>Cameron Road Pedestrian Crossing outside Te Puke Intermediate (Speed Bump on Cameron Road) - That the Te Puke Community Board approves up to \$12,000.00 if required out of the roading account for a concept design of the crossing facilities on Cameron Road outside of Te Puke Intermediate.</i>	12,000	(7,805)	(7,805)	<b>4,195</b>	<i>Completed: Can be closed off and left over funds can go back into the reserves account.</i>
TP21-2.7	<i>Commerce Lane Pedestrian Safety Improvements (Heritage Walkway Pedestrian Crossing) - That the Te Puke Community</i>	20,000	(20,000)			<i>Commerce Lane Pedestrian Safety</i>

	<i>Board approve the Community Rooding Programme and Order of priority of the projects listed: "4. Commerce Lane Pedestrian Safety, \$20,000"</i>					<i>Improvement Project Design is complete.</i>
TPC23-6.7	<i>Commerce Lane Pedestrian Safety Improvements (Heritage Walkway Pedestrian Crossing) - That the Te Puke Community Board approve additional funding of \$7,000 (excluding GST) that is required to progress the plans for public consultation relating</i>	7,000	(7,000)			<i>Commerce Lane Pedestrian Safety Improvement Project Design is complete.</i>
<b>Subtotal</b>				<b>(7,805)</b>	<b>124,916</b>	
<b>Less: Projects in progress</b>		<b>Total Committed</b>	<b>Total Spent</b>	<b>Project Spent in 2025 Financial Year</b>	<b>Balance Remaining</b>	<b>Status</b>
TPC24-4.10	<i>Commerce Lane Pedestrian Safety Improvements (Heritage Walkway Pedestrian Crossing) - That the Te Puke Community Board approves a budget of \$110,000.00 from the Rooding Account for safety improvement installations on Commerce Lane as shown in Attachment 3.</i>	110,000	(216)		109,784	<i>Waiting on contractors to advise on availability to complete. Lighting Design now complete.</i>
TPC23-6.6	<i>Te Puke Street Chair Refurbishment - That the Te Puke Community Board approve up to \$9,000.00 (excluding GST) from the Te Puke Community Board rooding budget, for the refurbishment of 20 bench seats along the main street of Te Puke, to be carried out by the MenzShed, and the removal and installation of these seats (as per the quote from the Transportation Area Engineer dated 27 September 2023).</i>	9,000	(2,698)	(1,079)	6,302	<i>Menz Shed completing final 2 chairs</i>
TP21-2.7	<i>Cameron Road Pedestrian Crossing outside Te Puke Intermediate (Speed Bump on Cameron Road) - That the Te Puke Community Board approve the Community Rooding Programme and Order of priority of the projects listed: "5. Te Puke Intermediate School Safety Improvements, \$80,000)</i>	80,000	(11,259)		68,741	<i>Project consultation tentatively booked for September. Community Board to then advise direction of the project.</i>
TPC24-4.7	<i>Heritage Plaza - That the Te Puke Community Board approves a budget of up to \$100,000.00 out of the Rooding Account for the costs relating to the design and installation of the Heritage Plaza, contingent on the concept design being approved by the Board.</i>	100,000	(3,250)	(3,250)	96,750	<i>Developed concept has been completed and being presented to community board in September.</i>
<b>Subtotal</b>				<b>(4,329)</b>	<b>281,577</b>	
<b>Current Account Closing Balance</b>				<b>1,280,434</b>		
<b>Less: Approved Projects</b>						<b>Status</b>



TPC24-4.8	<i>Landscape Road Footpath - That the Te Puke Community Board approves a budget of \$100,000.00 from the Roding Account for the design and installation of a footpath along Landscape Road along the road reserve in McLoughlin Park as shown in Attachment 1.</i>				100,000	<i>Have engaged designer to complete concept</i>
TPC24-4.9	<i>Fairhaven Park Footpath - That the Te Puke Community Board approves a budget of \$50,000.00 from the Roding Account for the design and installation of a footpath through Fairhaven Park as shown in Attachment 2.</i>				50,000	<i>Have requested contractor quotes to undertake</i>
<b>Total Commitments</b>		<b>150,000</b>				
Less: Committed Funds Unspent					(406,493)	
Add: Balance Remaining of Completed Projects					124,916	
<b>Total Uncommitted Funds Available for Future Projects</b>					<b>848,857</b>	

1.

**ATTACHMENTS**

1. **Landscape Road Footpath Design – Option 1**  
2. **Landscape Road Footpath Design – Option 2**  

**PROJECT UPDATES – ROADING**

SAFETY IMPROVEMENTS ON CAMERON ROAD		
Project Description	Staff Comment/Update	Progress Level
<p><i>With the Board resolving to remove the Speed Bump outside Te Puke Intermediate School on Cameron Road, it has been identified that there would need to be safety improvements made to this stretch of road.</i></p>	<p><b>Latest Update:</b> Detailed design is underway. It is estimated that the project will be completed over the summer school holidays.</p>	<p>In progress.</p>

HERITAGE PLAZA		
Project Description	Staff Comment/Update	Progress Level

<p><i>Refurbishment of the Heritage Plaza and procurement of local services.</i></p>	<p><b>Latest Update:</b> The Board have approved the developed design, and the project has progressed into the detailed design phase.  Once completed, the detailed design will be circulated to the Board.</p>	<p>In progress</p>
--	---	--------------------

<p><b>TE PUKE STREET CHAIR REFURBISHMENT</b></p>		
<p><b>Project Description</b></p>	<p><b>Staff Comment/Update</b></p>	<p><b>Progress Level</b></p>
<p><i>Refurbishment of 20 bench seats along the main street of Te Puke being carried out by the MenzShed, and the removal and installation of these seats.</i></p>	<p><b>Latest Update:</b> This project has been completed.</p>	<p>Completed</p>

<p><b>COMMERCE LANE SAFETY PROPOSALS</b></p>		
<p><b>Project Description</b></p>	<p><b>Staff Comment/Update</b></p>	<p><b>Progress Level</b></p>
<p><i>Safety upgrades to Commerce Lane.</i></p>	<p><b>Latest Update:</b> This project is with the contractor. The traffic management plan is waiting on approval, once this is approved, the Project Engineer Transportation will provide the Board with a commencement date.</p>	<p>In progress</p>

<p><b>INSTALLATION OF POWER CHRISTMAS TREE</b></p>		
--	--	--

<b>Project Description</b>	<b>Staff Comment/Update</b>	<b>Progress Level</b>
<i>Installation of a Powered Christmas Tree Site.</i>	<b>Latest Update:</b> It is anticipated that the Christmas Tree will be installed late November 2024.	In progress
<b>LANDSCAPE ROAD FOOTPATH</b>		
<b>Project Description</b>	<b>Staff Comment/Update</b>	<b>Progress Level</b>
<i>Installation of a footpath along Landscape Road along the road reserve in McCloughlin Park.</i>	<b>Latest Update:</b> Two concept designs have been provided to the Board. An onsite hui has been organised with the Board and the Project Engineer Transportation to discuss the concept designs. Once the Board have decided on their preferred option the project can progress.	In progress
<b>FAIRHAVEN PARK FOOTPATH</b>		
<b>Project Description</b>	<b>Staff Comment/Update</b>	<b>Progress Level</b>
<i>Installation of a footpath through Fairhaven Park.</i>	<b>Latest Update:</b> The Project Engineer is trying to get in contact with the sports field users to ensure that the footpath is not built where the field markings are placed. Once this has been actions, contractors will be engaged with.	In progress

**MINUTE ACTION SHEETS – ROADING**

<b>GEORGE STREET FOOTPATH INSTALLATION</b>		
<b>Meeting Date</b>	<b>Description</b>	<b>Latest Update</b>
September 2024	Installation of a footpath on George Street to Improve Pedestrian Safety	Concerns had been raised from members of the community regarding the safety of pedestrians on George Street.  Council staff have scoped the project and provided the board with a cost estimate of \$15,000 for the project.

**PROJECT UPDATES – OPERATIONS**

<b>ESTABLISHING COMMUNITY RESOURCE RECOVERY CENTRES (CRRIC)</b>		
<b>Project Description</b>	<b>Staff Comment/Update</b>	<b>Progress Level</b>
<i>Establishing community resource recovery centres at the Te Puke Recycle Centre, working with Iwi and community groups.</i>	No further updates from the last report when there had been a proposed change in the approach for delivering the Te Puke CRRIC. Due to their current projects and capacity, Tapuika indicated that the project would sit better under the umbrella of CoLAB. Tapuika would remain a partner in the project. Council has suggested that at this point it may be better to set up an advisory board as per Council's Resolution SPC23-1.4. This could consist of Tapuika, nominated CoLAB member(s) and a Council representative. Council also mentioned that Cath's role as the	In progress.

	<p>Community Activator would pivotal in getting this project off the ground and believe this contract should sit with Council directly. At this stage we have not heard back from Tapuika on the proposal. We will be able to report on the next steps when a new contract with CoLAB is in place.</p>	
--	--	--

## SERVICE REQUESTS

This section is to provide an overview of Service Request for the Te Puke Community Board area since the last meeting.

There has been one of each of the following subtypes of Service Requests raised and **completed**.

<ul style="list-style-type: none"> <li>• Animal Services - PERSON - Dog aggressive/ Rushed towards</li> <li>• Cemeteries - Old Te Puke Cemetery - Plot Enquiry</li> <li>• Compliance &amp; Enforcement - KERBSIDE - DWELLING QUERY</li> <li>• Consents Administration - Resource Consents</li> <li>• Kaupapa Maori - General Enquiry</li> <li>• Land Development Engineering - General enquiry/Call back</li> <li>• Reserves &amp; Facilities - Bollards</li> <li>• Reserves &amp; Facilities - General enquiry/Call-back</li> </ul>	<ul style="list-style-type: none"> <li>• Building Act Compliance - Building Warrant of Fitness Enquiries</li> <li>• Building Counter Enquiry - General enquiry/Call back</li> <li>• Consents Administration - Liquor licences</li> <li>• Customer Service Planning - Minor dwellings</li> <li>• Customer Service Planning - Property queries</li> <li>• Rates - Notice of change of ownership</li> <li>• Wastewater - Sewer pipe block/damaged/broke</li> <li>• Water - Flush hydrant request</li> </ul>
--	--

There has been one of each of the following subtypes of Service Requests raised, which are **under investigation**.

<ul style="list-style-type: none"> <li>• Customer Service Planning - Resource Consent Enquiries</li> <li>• Properties - Te Puke - Library and Service Centre</li> </ul>	<ul style="list-style-type: none"> <li>• Local Road - Road Surface Defects - UNSEALED LOCAL RD</li> <li>• Privacy &amp; LGOIMA - LGOIMA Request</li> <li>• Reserves &amp; Facilities - Pests - Insect/Animal</li> </ul>
---	---

The table below shows Service Requests that are higher in numbers and have a mix of statuses.

<b>Service Request Subtype</b>	<b>Notes</b>	<b>Completed</b>	<b>Under Investigation/ Scheduled for Completion</b>
Animal Services - Dog attacked (and made contact)	Reports from the Te Puke Community	1	1
Animal Services - Dog attacked (and made contact)	Reports from the Te Puke Community	2	0
Animal Services - Dog attacked (and made contact)	Reports from across the Te Puke Community	2	1
Animal Services - Dog attacked (and made contact)	Reports made across the Te Puke Community Board Area	8	0
Animal Services - Lost Dog	Reports from Donovan Street, Hookey Street and NO 4 Road	3	0
Animal Services - Other Animal Enquiries	Enquiries made across the Te Puke Community	5	0
Animal Services - Roaming Stock (Not State Highways)	Reports from Glen Terrace and Te Matai Road	3	0
Building Act Compliance - Building Compliance	Enquiries from Cameron Road, Manoeka Road and Brown Terrace	2	1
Building Warrant of Fitness Enquiries	Enquiries from across Te Puke Community	3	0
Building Act Compliance - General	Enquiries from across the Te Puke Community Board Area	3	1
Building Admin - General	General enquiries and call back requests from across the Te Puke Community	4	0



Building Inspectors – General	Enquiries and callback requests from across the Te Puke Community	4	0
Building Processing – General	Enquiries from NO 3 Road and Te Matai Road	2	0
District Wide Cemetery - Plot Enquiry	Plot enquiries for Dudley Vercoe Drive	2	0
Te Puke Cemetery - Headstone/Plaque	Enquiries for Dudley Vercoe Drive	5	0
Te Puke Cemetery - Plot Enquiry	Enquiries for Dudley Vercoe Drive	3	0
Compliance & Enforcement General	Enquiries from across the Te Puke Community	4	1
Complaints about Freedom Camping affecting Reserves or Roads	Complaints from Landscape Road, and Jocelyn Street	3	0
Noise Complaint (After Hours - Watchdog)	Complaints from across the Te Puke Community Board Area	24	0
Noise Complaint (Daytime - Watchdog)	Complaints from across the Te Puke Community Board Area	6	1
Compliance & Enforcement – Parking Query	Enquiries from across the Te Puke area	12	4
Resource Consent Compliance	General enquiries from Stapleton Place and Manoeka Road	2	1
Compliance & Enforcement – Signs	Reports from Jellicoe Street, Edgehill Place and Te Puke Highway	1	2
Customer Service Planning – General	Enquiries and callback requests from across the Te Puke Area	12	3
Kaupapa Maori – Land Enquiries	Enquiries from across the Te Puke Community	5	1

Kerbside Collective - Damaged Bin	Repair or replace requests from across the Te Puke Community	10	0
Kerbside General Enquiry	Enquiries from Lee Street and Barnett Place	2	0
Kerbside Collective - Lost/Stolen Bins	Replacement requests from across the Te Puke Community	7	0
Missed Collection - Investigation	Reports of missed collections across the Te Puke Community	3	0
Local Roads - ALL Cesspit/Grill/Gutters & Drains (sealed road	Replacement or maintenance asset requests across the Te Puke Community	4	2
Local Roads - General	Reports from across the Te Puke Community	12	8
Footpaths on Local Road	Replacement or maintenance asset requests across the Te Puke Community	4	3
Detritus (Loose Chips/Sand/Dead Animal) - NO Illegal Dumping	Reports from across the Te Puke Community	4	0
Local Rds-NON- URGENT tree requests	Request for trimming or removal of fallen tree/branch across the Te Puke Community	2	5
Local Road Marking	Request for re-marking on Te Puke Highway and Cameron Road	0	1
Local Road Signs (damaged/graffiti)	Replacement or maintenance asset request across the Te Puke Community	6	0
Road Surface Defects - SEALED LOCAL RD	Reports from across the Te Puke Community	8	5
Slip/Flood/Crash/Sp ill/Trees Down on Local Road-All Urgent	Reports from across the Te Puke Community	5	0

Vegetation(not trees)/mowing Local Roads	Reports from across the Te Puke Community	5	0
Properties – General	Enquiries from Jellicoe Street and Jocelyn Street	3	0
Pensioner Housing - 56 Lee St Te Puke	General enquiries for 56 Lee Street	3	0
Pensioner Housing - 9 Slater Place Te Puke	General enquiries for 9 Slater Place	2	0
Rates – General	Enquiries from across the Te Puke Community	15	4
Refuse - Illegal Dumping + Carcasses	Reports from across the Te Puke Community Board Area	9	3
Refuse - Litter/Bins-Shopfront/Carpark/Rest Area	Request for additional bin service from Jocelyn Street and Jellicoe Street	2	0
Refuse General (NOT BINS OR DUMPING)	Enquiries from Landscape Road and Clydesburn Avenue	2	0
Graffiti in Reserve ONLY	Reports from Jocelyn Street and Boucher Avenue	1	2
Litter/Litter Bins or dumping in Reserve	Reports from Atuaroa Street and Jellicoe Street	5	0
Reserves and Facilities - General	Enquiries from across the Te Puke Community Area	10	2
Wastewater - General	Enquiries and callback requests across the Te Puke Community Area	12	3
Water Leaks	Reports of water leaks across the Te Puke Community	17	3
Water - Connection/Meter/Toby (Location) Enquiry	Enquiries NO 3 Road and Moehau Street	1	1

Water – Emergency Shutdown	Reports from Princess Street, Te Puke Highway and Samantha Place	3	0
Water – Meter/Toby issue (not leak)	Enquiries from Te Matai Road, Collins Lane and Ara O Ngaupari	3	0
No water	Reports of no water on NO 1 Road and NO 2 Road	3	0
Water – Taste/Smell/Quality of Water	Reports from across the Te Puke Community	14	3
Water – General	Enquiries and call back requests from across the Te Puke Community	3	4

**MATTERS ARISING FROM PREVIOUS COMMUNITY BOARD MEETINGS (NOT MINUTE ACTION SHEETS)**

This section relates to any matters arising from prior Community Board meetings where a Minute Action Sheet was no raised.

Date raised	Matter/Issue	Comment
23 November 2023	History Board Project	<p>The Communications and Engagement Manager provided some further ideas for this project.</p> <p>Further discussion is needed by the Board.</p>
23 November 2023	Dog Park Service Requests	<p>Dog park requests are typically split into 3 categories.</p> <ul style="list-style-type: none"> <li>• Maintenance of the dog park</li> <li>• New dog park requests</li> <li>• Dog/Owner behaviour</li> </ul> <p>The below maintenance examples are contracted to Downer Reserves:</p> <ul style="list-style-type: none"> <li>• Dog poo bag dispensers</li> <li>• Water fountains</li> <li>• Fencing</li> </ul>

**COMPLETED/OUTSTANDING MINUTE ACTION SHEETS (NOT INFRASTRUCUTRE RELATED)**

This section relates to any Minute Action Sheets that are currently outstanding, as well as completed Minute Action Sheets since the last Community Board Meeting.

Date raised	Matter/Issue	Comment
23 November 2023	Strategic Direction	The Strategic Direction final document was circulated to Board members and published on the Council website. This can be found in the following link: <a href="https://www.westernbay.govt.nz/council/committees-community-boards-forums/te-puke-community-board">https://www.westernbay.govt.nz/council/committees-community-boards-forums/te-puke-community-board</a>
23 November 2023	Approval of the Te Puke Community Board Annual Operating Budget	This budget has been referred to the Long-Term Plan.

# LANDSCAPE ROAD, TE PUKE FOOTPATH CONCEPT DESIGN DRAWINGS - OPTION 1 WESTERN BAY OF PLENTY DISTRICT COUNCIL

File Name: C:\124\Site\BTW\12D\240682.00 - Western Bay of Plenty District Council\_753507 Drawings\240682.00-GD-01-Landscape Road Footpath Design - Option 1.dwg - C00 Plot Date: 26/09/2024 Plot Time: 10:18

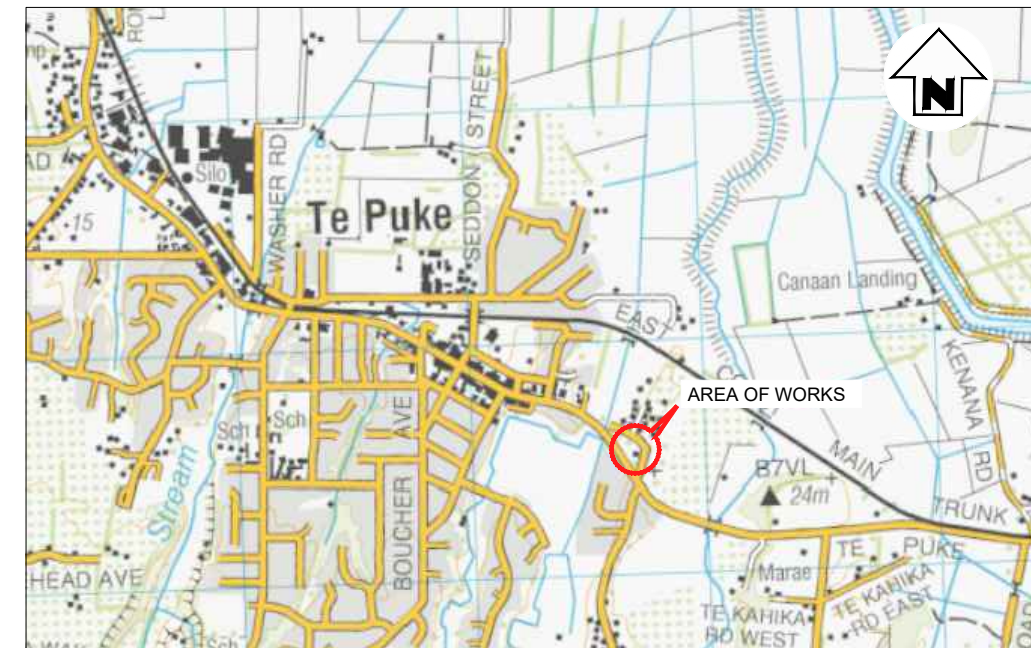
**DRAWING REGISTER**

DRAWING	SHEET	TITLE	DATE OF ISSUE / REVISION			
			A			
240682.00-GD-01	C00	COVER SHEET AND DRAWING INDEX	26/09/2024			
240682.00-GD-01	C01	OVERALL SITE PLAN	26/09/2024			
240682.00-GD-01	C02	NEW FOOTPATH SITE PLAN - 01	26/09/2024			
240682.00-GD-01	C03	NEW FOOTPATH SITE PLAN - 02	26/09/2024			
240682.00-GD-01	C04	NEW CEMETERY SHARED PATH SITE PLAN	26/09/2024			
240682.00-GD-01	C05	TYPICAL CROSS SECTION DETAILS	26/09/2024			
240682.00-GD-01	C06	NEW FOOTPATH CROSS SECTIONS - 01	26/09/2024			
240682.00-GD-01	C07	NEW FOOTPATH CROSS SECTIONS - 02	26/09/2024			
240682.00-GD-01	C08	NEW FOOTPATH CROSS SECTIONS - 03	26/09/2024			
240682.00-GD-01	C09	NEW FOOTPATH CROSS SECTIONS - 04	26/09/2024			
240682.00-GD-01	C10	NEW FOOTPATH CROSS SECTIONS - 05	26/09/2024			
240682.00-GD-01	C11	NEW CEMETERY SHARED PATH CROSS SECTIONS	26/09/2024			

WD	WORKING DRAFT	C	TENDER
A	APPROVAL	0	CONSTRUCTION
B	CONSENTS	AS	AS BUILT

**TRANSMITTAL**

TO	ATTENTION	DATE OF ISSUE / REVISION			
		A			
OWNER / DEVELOPER					
ARCHITECT / DESIGNER					
QUANTITY SURVEYOR					
BUILDER / CONTRACTOR					
TERRITORIAL AUTHORITY	WESTERN BAY OF PLENTY COUNCIL				



PROJECT LOCATION PLAN  
SCALE N.T.S



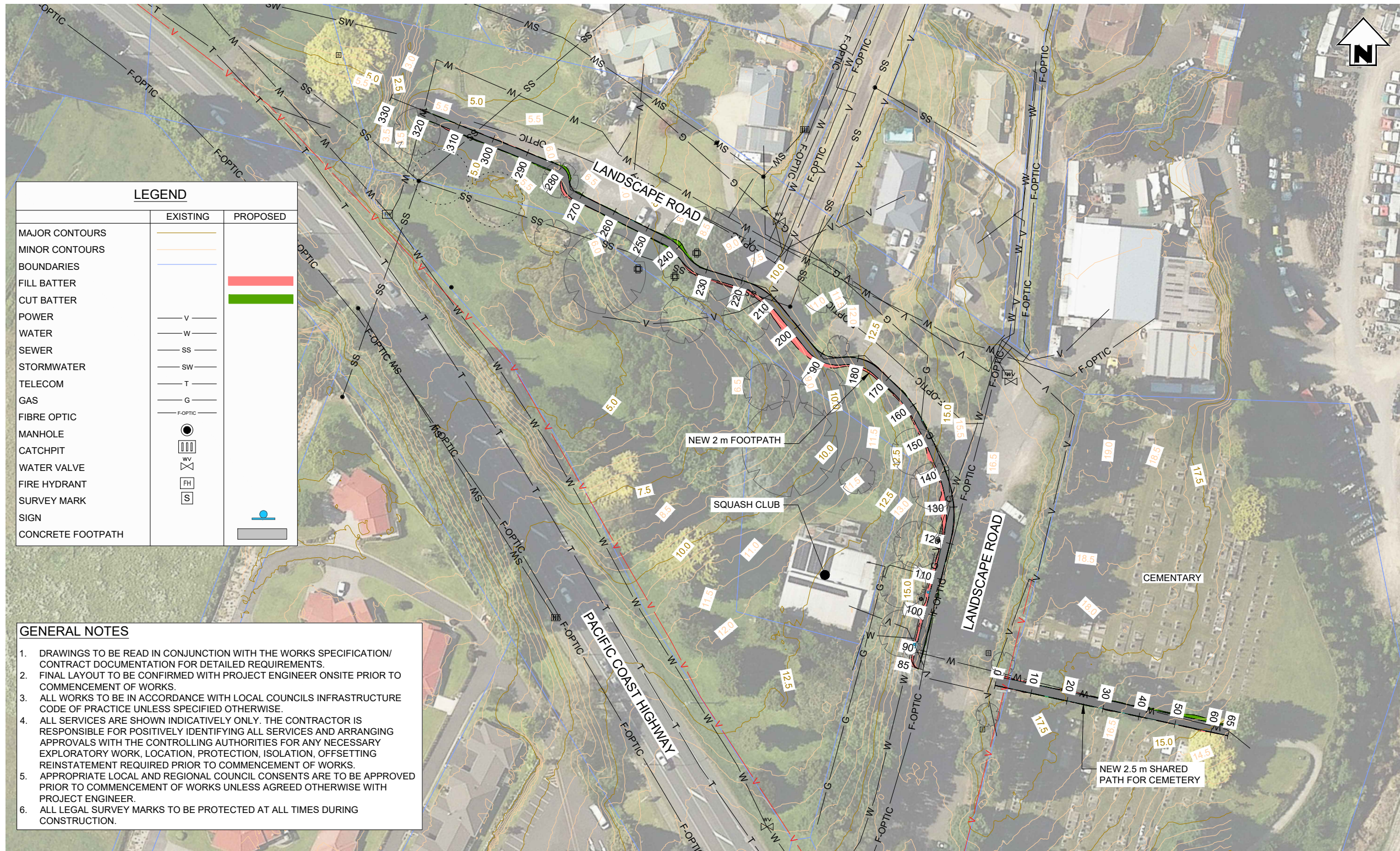
**SURVEYING  
ENGINEERING  
PLANNING  
ENVIRONMENT**



Te Kaunihera  
a rohe māi i  
Ngā Kuri-a-Whārei ki  
Otamarakau ki te Uru

FOR APPROVAL

File Name: C:\124\State\BTW\12D\240682.00 - Western Bay of Plenty District Council\_753507 Drawings\240682.00-GD-01-Landscape Road Footpath Design - Option 1.dwg - C01 Plot Date: 26/09/2024 Plot Time: 10:18



LEGEND	
EXISTING	PROPOSED
MAJOR CONTOURS	
MINOR CONTOURS	
BOUNDARIES	
FILL BATTER	
CUT BATTER	
POWER	
WATER	
SEWER	
STORMWATER	
TELECOM	
GAS	
FIBRE OPTIC	
MANHOLE	
CATCHPIT	
WATER VALVE	
FIRE HYDRANT	
SURVEY MARK	
SIGN	
CONCRETE FOOTPATH	

- GENERAL NOTES**
1. DRAWINGS TO BE READ IN CONJUNCTION WITH THE WORKS SPECIFICATION/ CONTRACT DOCUMENTATION FOR DETAILED REQUIREMENTS.
  2. FINAL LAYOUT TO BE CONFIRMED WITH PROJECT ENGINEER ONSITE PRIOR TO COMMENCEMENT OF WORKS.
  3. ALL WORKS TO BE IN ACCORDANCE WITH LOCAL COUNCILS INFRASTRUCTURE CODE OF PRACTICE UNLESS SPECIFIED OTHERWISE.
  4. ALL SERVICES ARE SHOWN INDICATIVELY ONLY. THE CONTRACTOR IS RESPONSIBLE FOR POSITIVELY IDENTIFYING ALL SERVICES AND ARRANGING APPROVALS WITH THE CONTROLLING AUTHORITIES FOR ANY NECESSARY EXPLORATORY WORK, LOCATION, PROTECTION, ISOLATION, OFFSETTING REINSTATEMENT REQUIRED PRIOR TO COMMENCEMENT OF WORKS.
  5. APPROPRIATE LOCAL AND REGIONAL COUNCIL CONSENTS ARE TO BE APPROVED PRIOR TO COMMENCEMENT OF WORKS UNLESS AGREED OTHERWISE WITH PROJECT ENGINEER.
  6. ALL LEGAL SURVEY MARKS TO BE PROTECTED AT ALL TIMES DURING CONSTRUCTION.

Disclaimer:  
Areas and dimensions may be subject to scale error.  
Scaling from this drawing is at the users risk.

PLAN  
SCALE 1:1000

FOR APPROVAL

**BTW**  
COMPANY

**SURVEYING**  
**ENGINEERING**  
**PLANNING**  
**ENVIRONMENT**

NO	DATE	BY	CHKD	APPR	OPER	DESCRIPTION	NUMBER	TITLE
A	26/09/24	Q.P.	B.P.			FOR APPROVAL		
REVISIONS						DESCRIPTION	NUMBER	TITLE
REFERENCE DRAWINGS								

**GENERAL NOTES**

1. Coordinates in terms of: New Zealand Transverse Mercator Projection
2. Elevations in terms of: NZ Vertical Datum 2016
3. Contour interval is: 0.5m

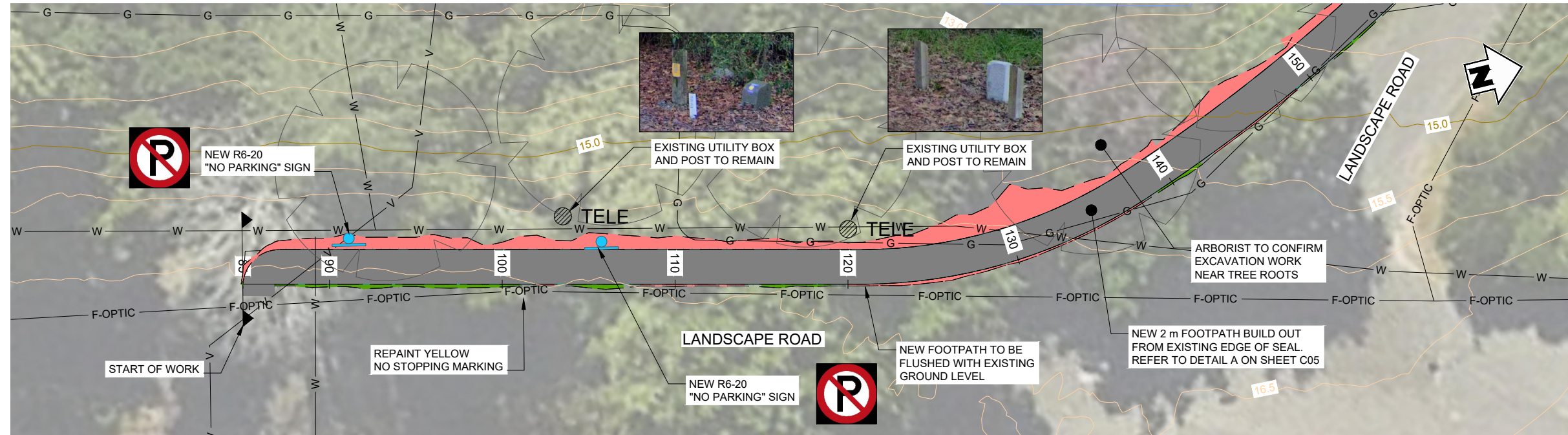
**Western Bay of Plenty District Council**  
Te Kaunihera a rohe mai i Ngā Kuri-a-Whāreki ki Otago/Kōwhiri ki te Uruā

LOCATION	TE PUKE
PROJECT No.	240682.00
A3 SCALE	AS SHOWN
SURVEYED	-
DRAWN	Q.PHAM
CHECKED	B.PEARSON

TITLE		WESTERN BAY OF PLENTY DISTRICT COUNCIL	
		LANDSCAPE ROAD, TE PUKE FOOTPATH - OPTION 1	
		OVERALL SITE PLAN	
ORIGINAL SIZE	DRAWING No.	SHEET	REVISION
A3	240682.00-GD-01	C01	A

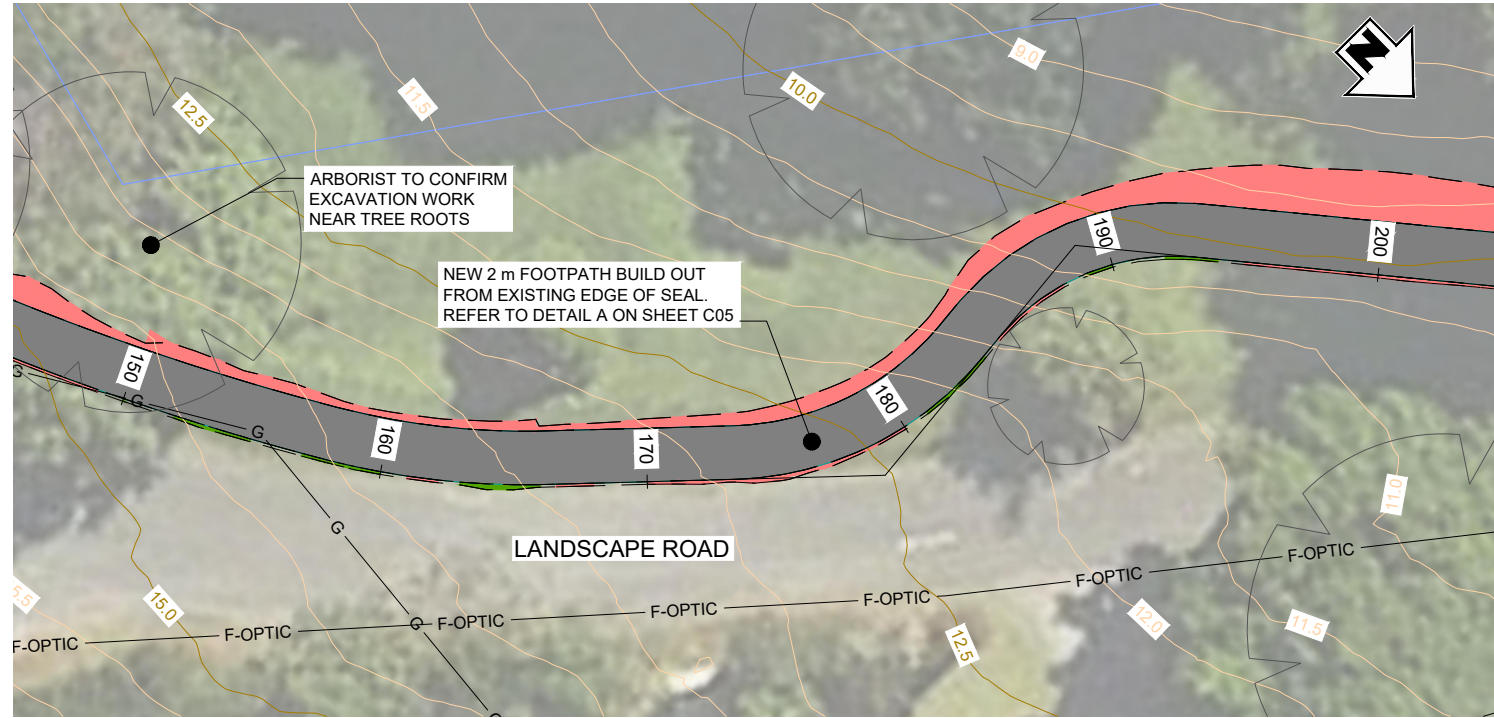


File Name: C:\124\Site\BTW\124\04682.00 - Western Bay of Plenty District Council\_753507 Drawings\240682.00-GD-01-Landscape Road Footpath Design - Option 1.dwg - C02 Plot Date: 26/09/2024 Plot Time: 10:18



PLAN  
SCALE 1:250

LEGEND	
EXISTING	PROPOSED
MAJOR CONTOURS	
MINOR CONTOURS	
BOUNDARIES	
FILL BATTER	<span style="color: red;">█</span>
CUT BATTER	<span style="color: green;">█</span>
POWER	— v —
WATER	— w —
SEWER	— ss —
STORMWATER	— sw —
TELECOM	— t —
GAS	— g —
FIBRE OPTIC	— f-optic —
MANHOLE	⊙
CATCHPIT	⊙
WATER VALVE	⊙
FIRE HYDRANT	[FH]
SURVEY MARK	[S]
SIGN	⊙
CONCRETE FOOTPATH	▭



PLAN  
SCALE 1:250

FOR APPROVAL



Disclaimer:  
Areas and dimensions may be subject to scale error.  
Scaling from this drawing is at the users risk.

**BTW**  
COMPANY

**SURVEYING**  
**ENGINEERING**  
**PLANNING**  
**ENVIRONMENT**

NO	DATE	BY	CHKD	APPR	OPER	DESCRIPTION	NUMBER	TITLE
FOR APPROVAL								
REVISIONS								
REFERENCE DRAWINGS								

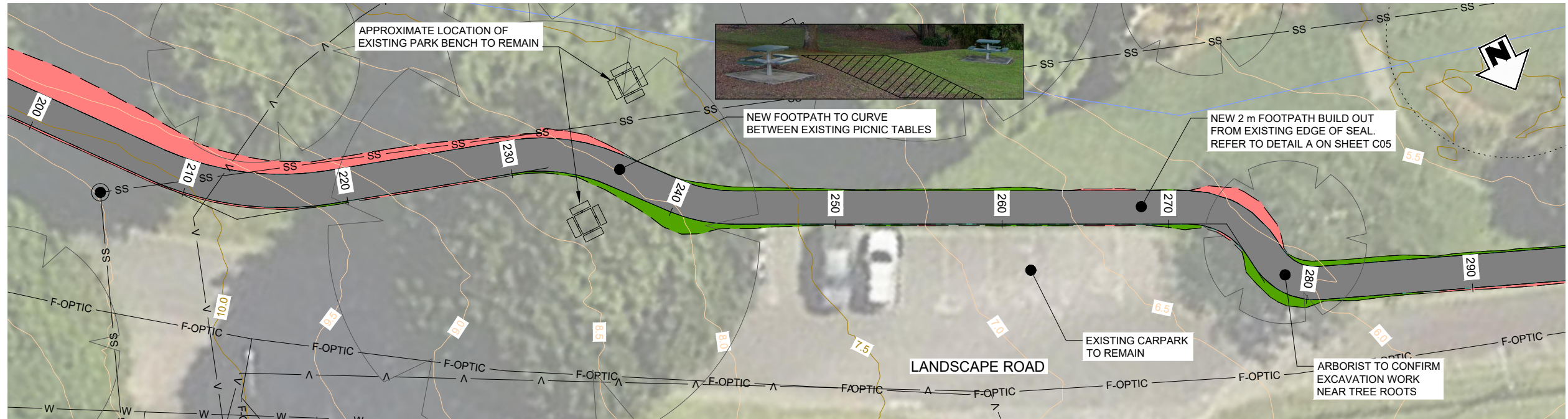
GENERAL NOTES  
1. Coordinates in terms of : New Zealand Transverse Mercator Projection  
2. Elevations in terms of : NZ Vertical Datum 2016  
3. Contour interval is : 0.5m



LOCATION	TE PUKE
PROJECT No.	240682.00
A3 SCALE	AS SHOWN
SURVEYED	-
DRAWN	Q. PHAM
CHECKED	B. PEARSON

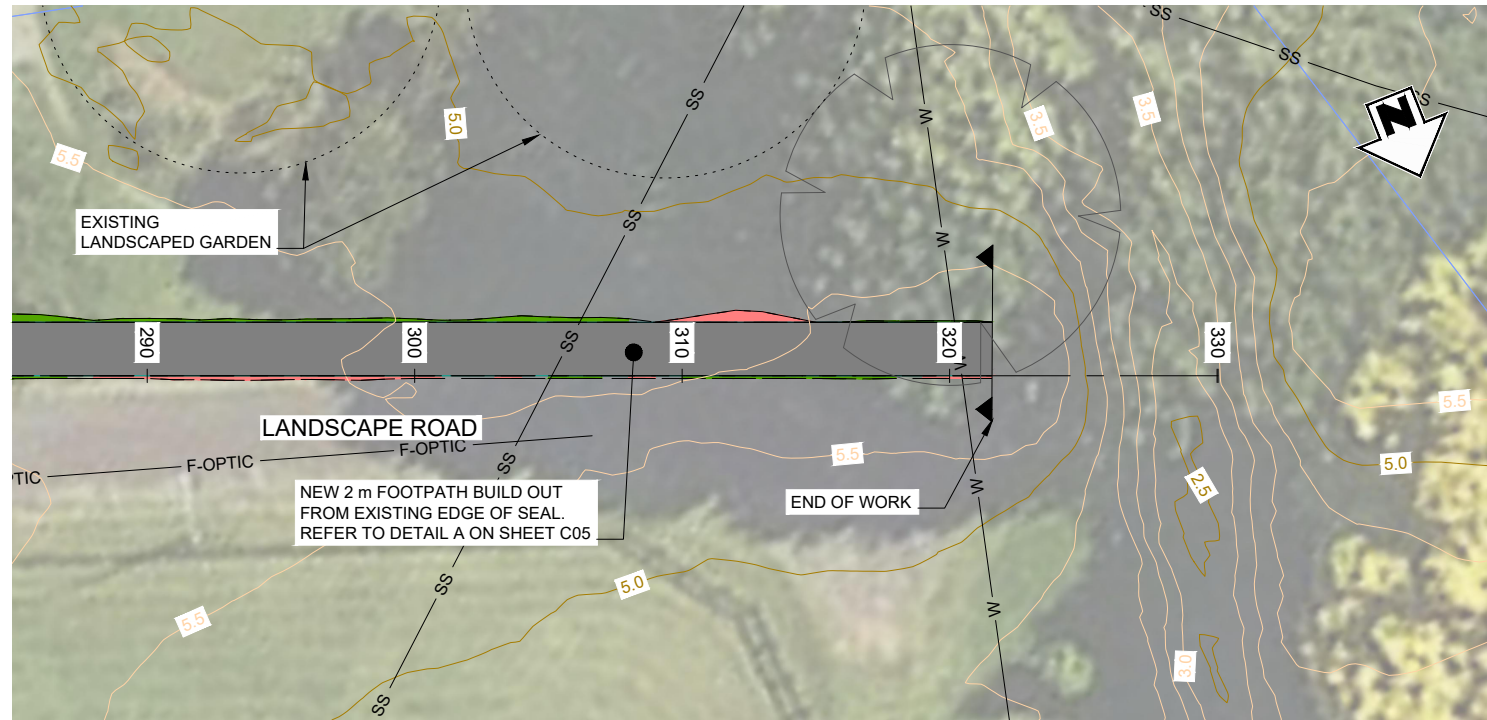
TITLE		WESTERN BAY OF PLENTY DISTRICT COUNCIL	
		LANDSCAPE ROAD, TE PUKE FOOTPATH - OPTION 1	
		NEW FOOTPATH SITE PLAN - 01	
ORIGINAL SIZE	DRAWING No	SHEET	REVISION
A3	240682.00-GD-01	C02	A

File Name: C:\124\State\BTW\12D\240682.00 - Western Bay of Plenty District Council\_753507 Drawings\240682.00-GD-01-Landscape Road Footpath Design - Option 1.dwg - C03 Plot Date: 26/09/2024 Plot Time: 10:18



PLAN  
SCALE 1:250

LEGEND	
EXISTING	PROPOSED
MAJOR CONTOURS	
MINOR CONTOURS	
BOUNDARIES	
FILL BATTER	
CUT BATTER	
POWER	
WATER	
SEWER	
STORMWATER	
TELECOM	
GAS	
FIBRE OPTIC	
MANHOLE	
CATCHPIT	
WATER VALVE	
FIRE HYDRANT	
SURVEY MARK	
CONCRETE FOOTPATH	



PLAN  
SCALE 1:250

FOR APPROVAL



Disclaimer:  
Areas and dimensions may be subject to scale error.  
Scaling from this drawing is at the users risk.



**SURVEYING  
ENGINEERING  
PLANNING  
ENVIRONMENT**

NO	DATE	BY	CHKD	APPR	OPER	DESCRIPTION	NUMBER	TITLE
A	26/09/24	Q.P.	B.P.			FOR APPROVAL		
REVISIONS								
REFERENCE DRAWINGS								

**GENERAL NOTES**

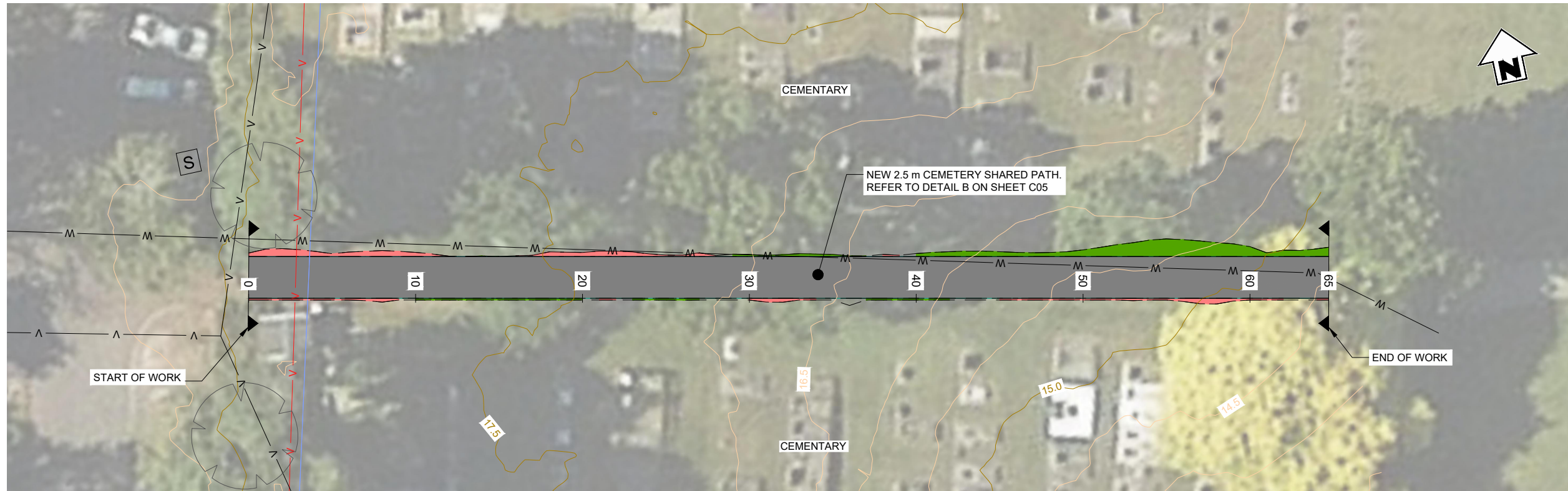
- Coordinates in terms of: New Zealand Transverse Mercator Projection
- Elevations in terms of: NZ Vertical Datum 2016
- Contour interval is: 0.5m

**Western Bay of Plenty District Council**  
Te Kaitiaki  
a rohe māi  
Ngā Kuri-a-Whāreki ki  
Ōtāmokoroa ki te Uruā

LOCATION	TE PUKE
PROJECT No.	240682.00
A3 SCALE	AS SHOWN
SURVEYED	-
DRAWN	Q.PHAM
CHECKED	B.PEARSON

WESTERN BAY OF PLENTY DISTRICT COUNCIL LANDSCAPE ROAD, TE PUKE FOOTPATH - OPTION 1 NEW FOOTPATH SITE PLAN - 02			
ORIGINAL SIZE	DRAWING No.	SHEET	REVISION
A3	240682.00-GD-01	C03	A

File Name: C:\124\State\BTW\12D\240682.00 - Western Bay of Plenty District Council\_753507 Drawings\240682.00-GD-01-Landscape Road Footpath Design - Option 1.dwg - C04 Plot Date: 26/09/2024 Plot Time: 10:18



PLAN  
SCALE 1:250

LEGEND		
	EXISTING	PROPOSED
MAJOR CONTOURS		
MINOR CONTOURS		
BOUNDARIES		
FILL BATTER		
CUT BATTER		
POWER		
WATER		
SEWER		
STORMWATER		
TELECOM		
GAS		
FIBRE OPTIC		
MANHOLE		
CATCHPIT		
WATER VALVE		
FIRE HYDRANT		
SURVEY MARK		
CONCRETE FOOTPATH		



Disclaimer:  
Areas and dimensions may be subject to scale error.  
Scaling from this drawing is at the users risk.

FOR APPROVAL



**SURVEYING  
ENGINEERING  
PLANNING  
ENVIRONMENT**

NO	DATE	BY	CHKD	APPR	OPER	DESCRIPTION	NUMBER	TITLE
A	26/09/24	Q.P.	B.P.			FOR APPROVAL		
REVISIONS						REFERENCE DRAWINGS		

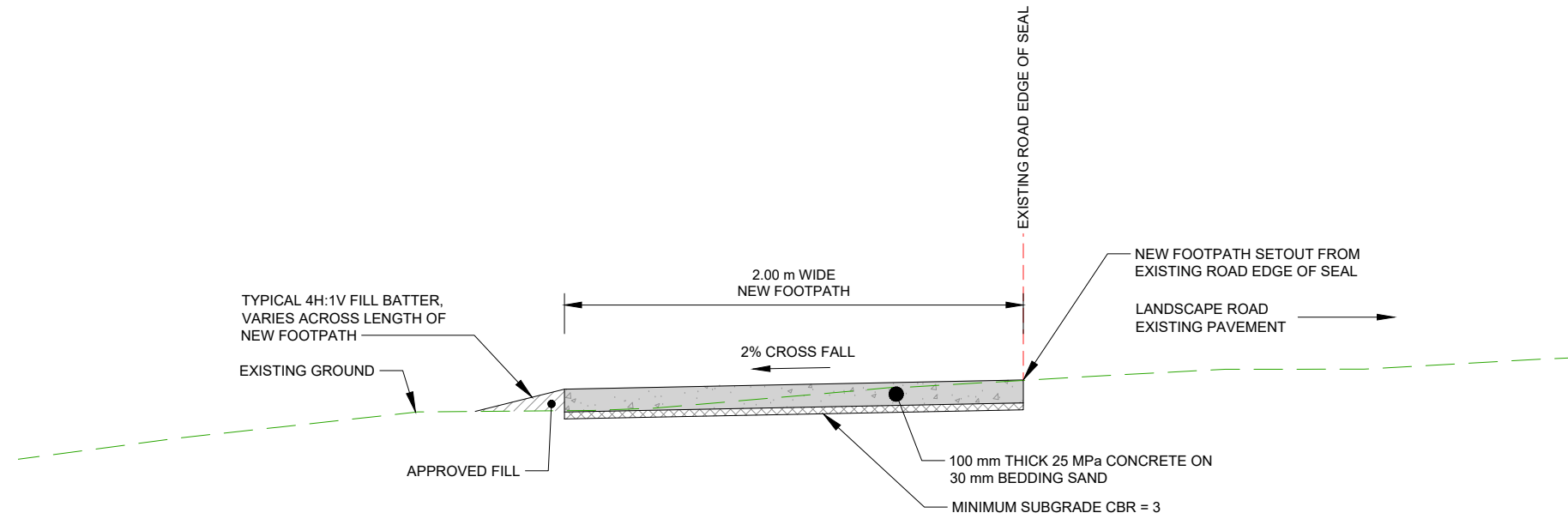
**GENERAL NOTES**  
 1. Coordinates in terms of : New Zealand Transverse Mercator Projection  
 2. Elevations in terms of : NZ Vertical Datum 2016  
 3. Contour interval is : 0.5m

**Western Bay of Plenty District Council**  
 Te Kaunihera  
 a rohe mai i  
 Ngā Kuri-a-Whāreki ki  
 Ōtāmokoroa ki te Uruā

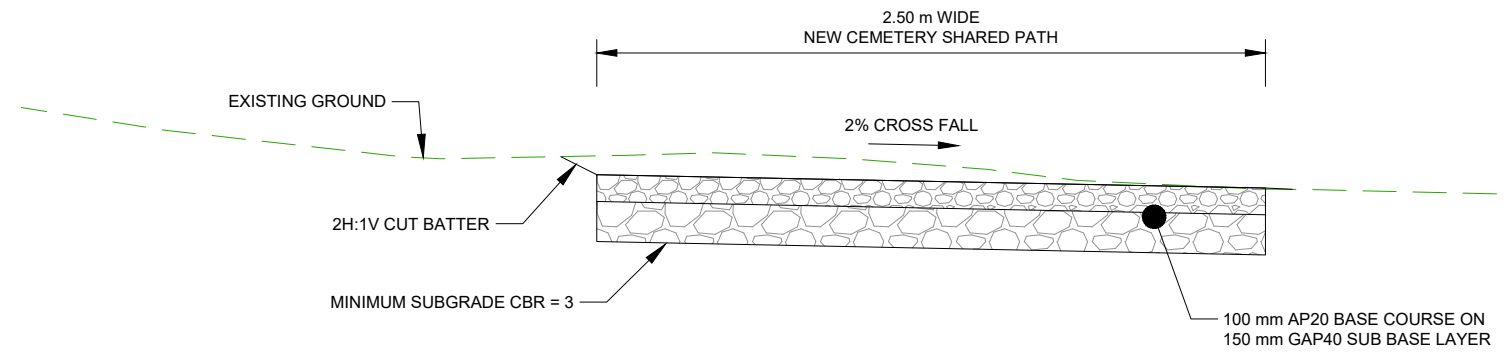
LOCATION	TE PUKE
PROJECT No.	240682.00
A3 SCALE	AS SHOWN
SURVEYED	-
DRAWN	Q.PHAM
CHECKED	B.PEARSON

TITLE			
WESTERN BAY OF PLENTY DISTRICT COUNCIL LANDSCAPE ROAD, TE PUKE FOOTPATH - OPTION 1 NEW CEMETERY SHARED PATH SITE PLAN			
ORIGINAL SIZE	DRAWING No	SHEET	REVISION
A3	240682.00-GD-01	C04	A

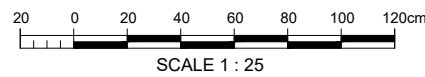
File Name: C:\124\State\BTW\12D\240682.00 - Western Bay of Plenty District Council\_753507 Drawings\240682.00-GD-01-Landscape Road Footpath Design - Option 1.dwg - C05 Plot Date: 26/09/2024 Plot Time: 10:18



**DETAIL A**  
**NEW 2 m WIDE FOOTPATH TYPICAL CROSS SECTION DETAIL**  
 SCALE: 1:25



**DETAIL B**  
**NEW 2.5 m WIDE CEMETERY SHARED PATH TYPICAL CROSS SECTION DETAIL**  
 SCALE: 1:25

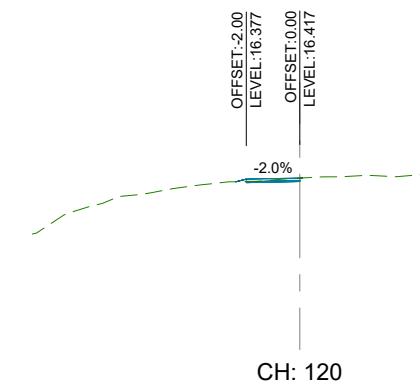
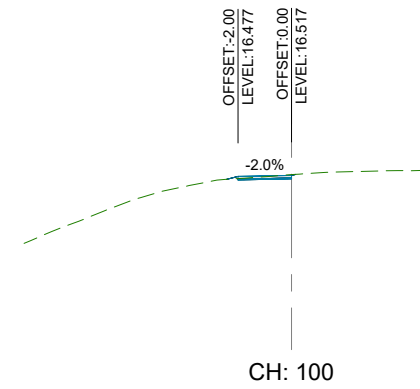
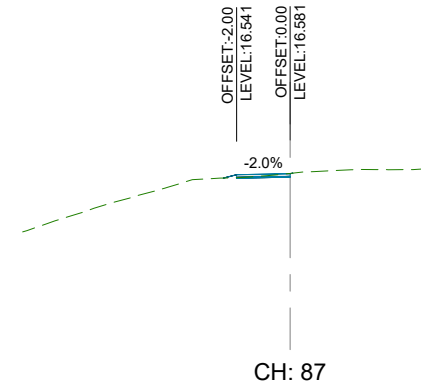
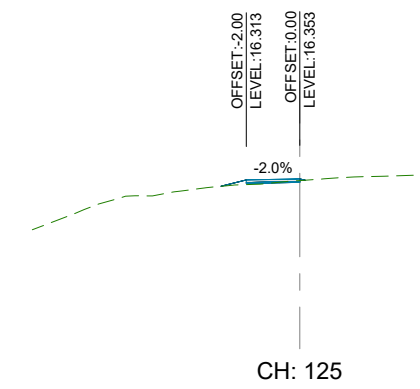
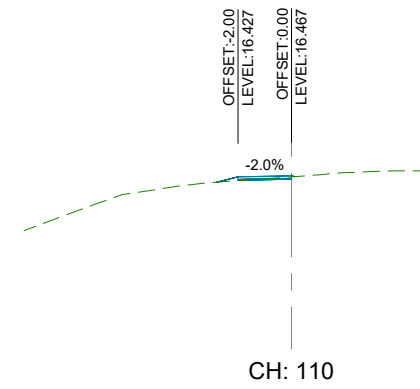
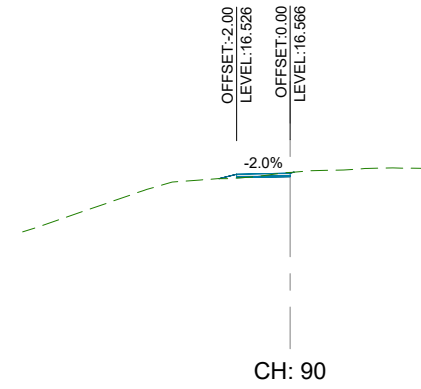


Disclaimer:  
 Areas and dimensions may be subject to scale error.  
 Scaling from this drawing is at the users risk.

FOR APPROVAL

	<b>SURVEYING ENGINEERING PLANNING ENVIRONMENT</b>	FOR APPROVAL				GENERAL NOTES 1. Coordinates in terms of : New Zealand Transverse Mercator Projection 2. Elevations in terms of : NZ Vertical Datum 2016 3. Contour interval is : NA		LOCATION TE PUKE		TITLE WESTERN BAY OF PLENTY DISTRICT COUNCIL LANDSCAPE ROAD, TE PUKE FOOTPATH - OPTION 1 TYPICAL CROSS SECTION DETAILS																						
		<table border="1" style="width: 100%; border-collapse: collapse;"> <thead> <tr> <th>NO</th> <th>DATE</th> <th>BY</th> <th>CHKD</th> <th>APPR</th> <th>OPER</th> <th>DESCRIPTION</th> <th>NUMBER</th> <th>TITLE</th> </tr> </thead> <tbody> <tr> <td> </td> <td> </td> <td> </td> <td> </td> <td> </td> <td> </td> <td> </td> <td> </td> <td> </td> </tr> </tbody> </table>	NO	DATE	BY	CHKD	APPR	OPER	DESCRIPTION					NUMBER	TITLE										<table border="1" style="width: 100%; border-collapse: collapse;"> <thead> <tr> <th>AS SCALE</th> <th>AS SHOWN</th> </tr> </thead> <tbody> <tr> <td>SURVEYED</td> <td>-</td> </tr> <tr> <td>DRAWN</td> <td>Q.PHAM</td> </tr> <tr> <td>CHECKED</td> <td>B.PEARSON</td> </tr> </tbody> </table>	AS SCALE	AS SHOWN	SURVEYED	-	DRAWN	Q.PHAM	CHECKED
NO	DATE	BY	CHKD	APPR	OPER	DESCRIPTION	NUMBER	TITLE																								
AS SCALE	AS SHOWN																															
SURVEYED	-																															
DRAWN	Q.PHAM																															
CHECKED	B.PEARSON																															

File Name: C:\124\State\BTW\12D\240682.00 - Western Bay of Plenty District Council\_753507 Drawings\240682.00-GD-01-Landscape Road Footpath Design - Option 1.dwg - C06 Plot Date: 26/09/2024 Plot Time: 10:18



Disclaimer:  
Areas and dimensions may be subject to scale error.  
Scaling from this drawing is at the users risk.

FOR APPROVAL



**SURVEYING  
ENGINEERING  
PLANNING  
ENVIRONMENT**

NO	DATE	BY	CHKD	APPR	OPER	DESCRIPTION	NUMBER	TITLE
A	26/09/24	Q.P	B.P			FOR APPROVAL		
REVISIONS						REFERENCE DRAWINGS		

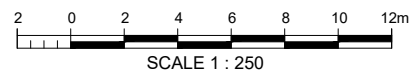
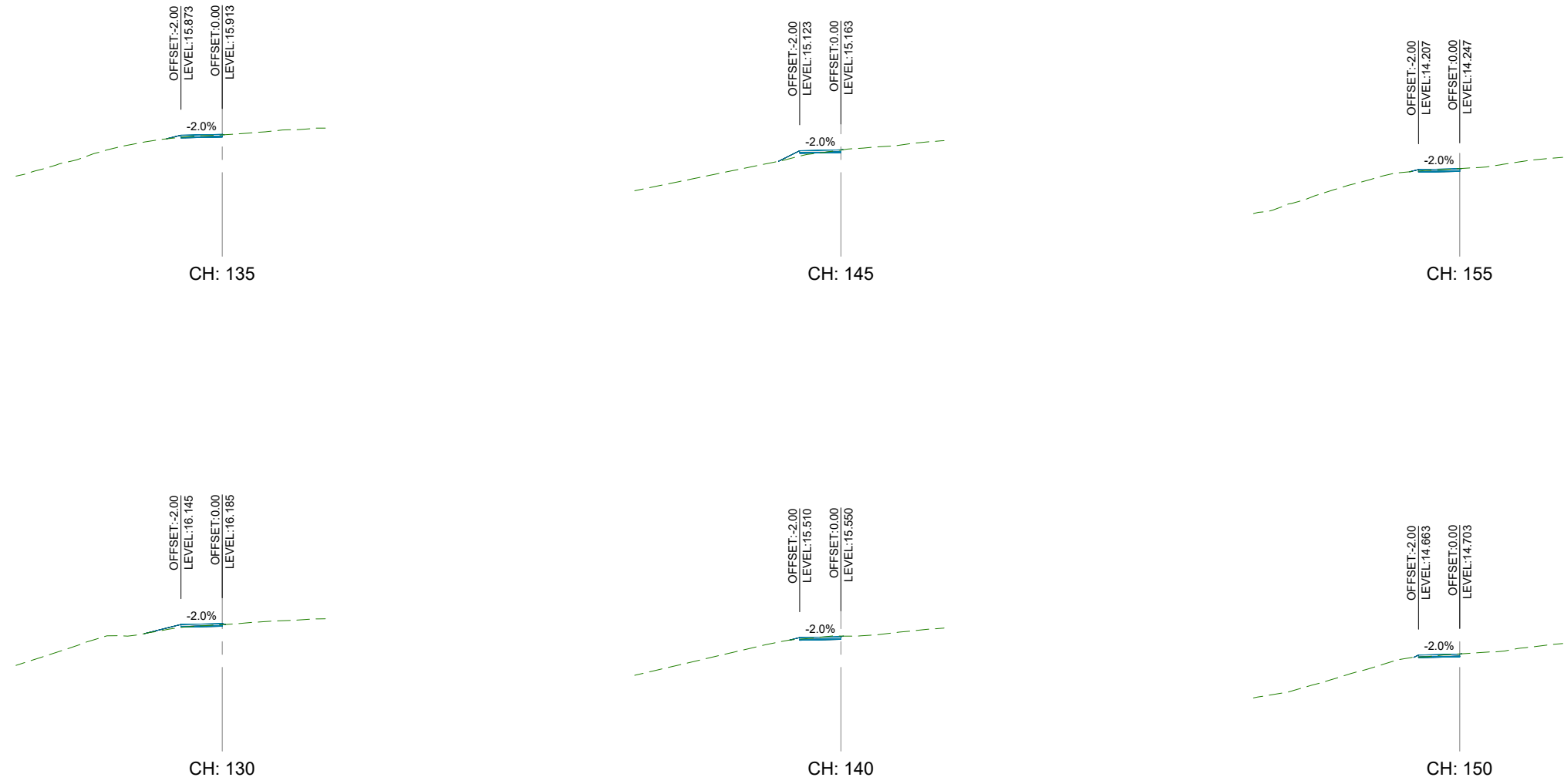
**GENERAL NOTES**  
 1. Coordinates in terms of : New Zealand Transverse Mercator Projection  
 2. Elevations in terms of : NZ Vertical Datum 2016  
 3. Contour interval is : NA

Te Kaitiaki  
a rohe mai i  
Ngā Kuri-a-Whāreki ki  
Ōtāmihou ki te Uruā

LOCATION	TE PUKE
PROJECT No.	240682.00
A3 SCALE	AS SHOWN
SURVEYED	-
DRAWN	Q.PHAM
CHECKED	B.PEARSON

TITLE		WESTERN BAY OF PLENTY DISTRICT COUNCIL	
LANDSCAPE ROAD, TE PUKE FOOTPATH - OPTION 1		NEW FOOTPATH CROSS SECTIONS - 01	
ORIGINAL SIZE	DRAWING No	SHEET	REVISION
A3	240682.00-GD-01	C06	A

File Name: C:\124\State\BTW\12D\240682.00 - Western Bay of Plenty District Council\_753507 Drawings\240682.00-GD-01-Landscape Road Footpath Design - Option 1.dwg - C07 Plot Date: 26/09/2024 Plot Time: 10:18



Disclaimer:  
Areas and dimensions may be subject to scale error.  
Scaling from this drawing is at the users risk.

FOR APPROVAL



**SURVEYING  
ENGINEERING  
PLANNING  
ENVIRONMENT**

NO	DATE	BY	CHKD	APPR	OPER	DESCRIPTION	NUMBER	TITLE
A	26/09/24	Q.P.	B.P.			FOR APPROVAL		

**GENERAL NOTES**  
 1. Coordinates in terms of : New Zealand Transverse Mercator Projection  
 2. Elevations in terms of : NZ Vertical Datum 2016  
 3. Contour interval is : NA

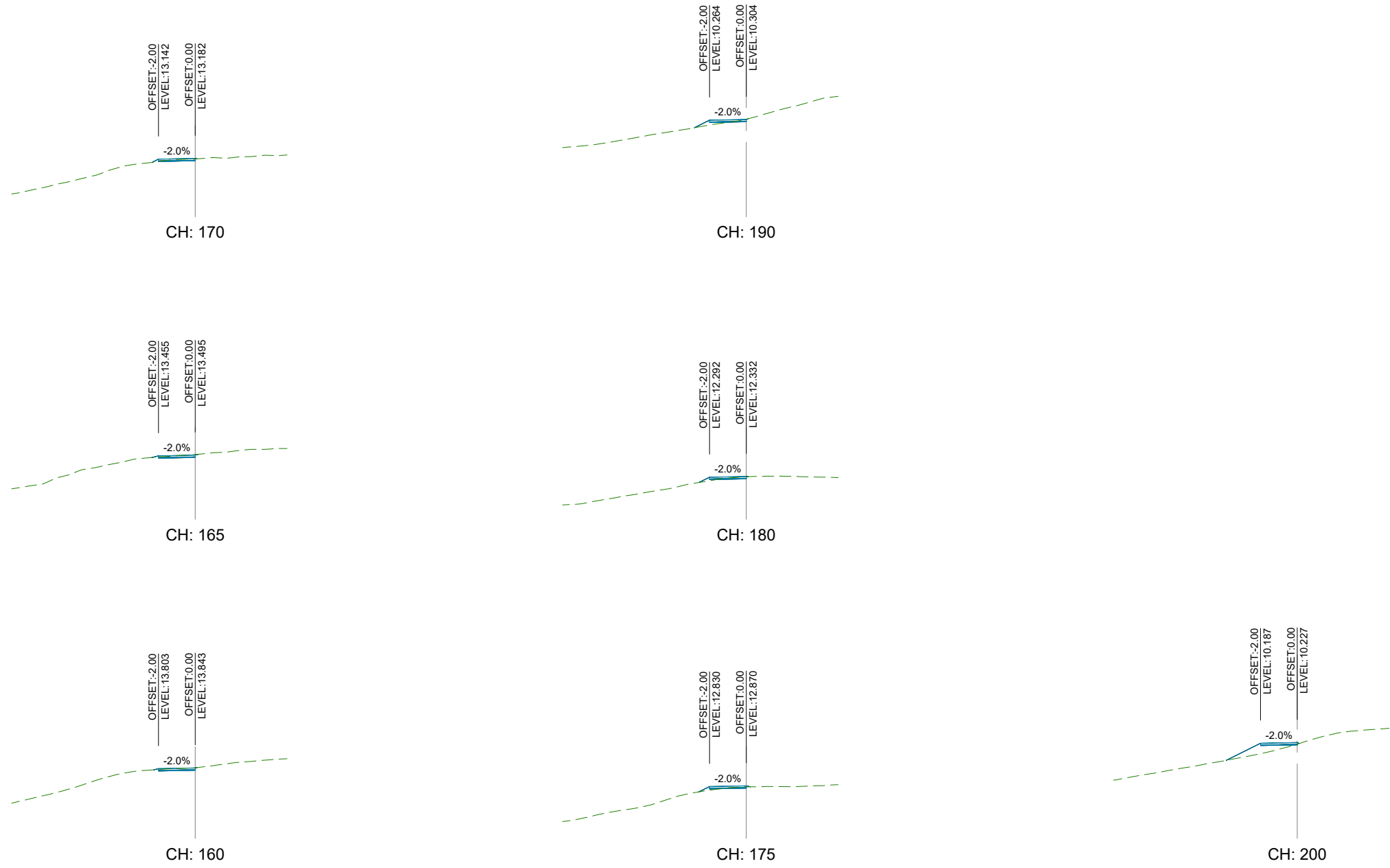
Te Kaitiaki  
a rohe māi  
Ngā Kuri-a-Whāreki ki  
Ōtāmoko/Kōwhiri ki te Uruā

LOCATION	TE PUKE
PROJECT No.	240682.00
A3 SCALE	AS SHOWN
SURVEYED	-
DRAWN	Q.PHAM
CHECKED	B.PEARSON

TITLE WESTERN BAY OF PLENTY DISTRICT COUNCIL LANDSCAPE ROAD, TE PUKE FOOTPATH - OPTION 1 NEW FOOTPATH CROSS SECTIONS - 02			
ORIGINAL SIZE	DRAWING No	SHEET	REVISION
A3	240682.00-GD-01	C07	A

10:18

File Name: C:\124\Stata\BTW\12D\240682.00 - Western Bay of Plenty District Council\_753507 Drawings\240682.00-GD-01-Landscape Road Footpath Design - Option 1.dwg - C08 Plot Date: 26/09/2024 Plot Time:



Disclaimer:  
Areas and dimensions may be subject to scale error.  
Scaling from this drawing is at the users risk.

FOR APPROVAL

	SURVEYING ENGINEERING PLANNING ENVIRONMENT	REVISIONS				REFERENCE DRAWINGS		GENERAL NOTES 1. Coordinates in terms of : New Zealand Transverse Mercator Projection 2. Elevations in terms of : NZ Vertical Datum 2016 3. Contour interval is : NA	LOCATION TE PUKE	TITLE WESTERN BAY OF PLENTY DISTRICT COUNCIL LANDSCAPE ROAD, TE PUKE FOOTPATH - OPTION 1 NEW FOOTPATH CROSS SECTIONS - 03	
		PROJECT No. 240682.00		A3 SCALE AS SHOWN	SURVEYED -	ORIGINAL SIZE A3	DRAWING No. 240682.00-GD-01		SHEET C08		REVISION A
NO A	DATE 26/09/24	BY Q.P.	CHKD B.P.	APPR FOR APPROVAL	OPER -	DESCRIPTION -	NUMBER -	TITLE -	DRAWN Q.PHAM	CHECKED B.PEARSON	DATE 17/09/2024

File Name: C:\124\State\BTW\12D\240682.00 - Western Bay of Plenty District Council\_753507 Drawings\240682.00-GD-01-Landscape Road Footpath Design - Option 1.dwg - C09 Plot Date: 26/09/2024 Plot Time: 10:18



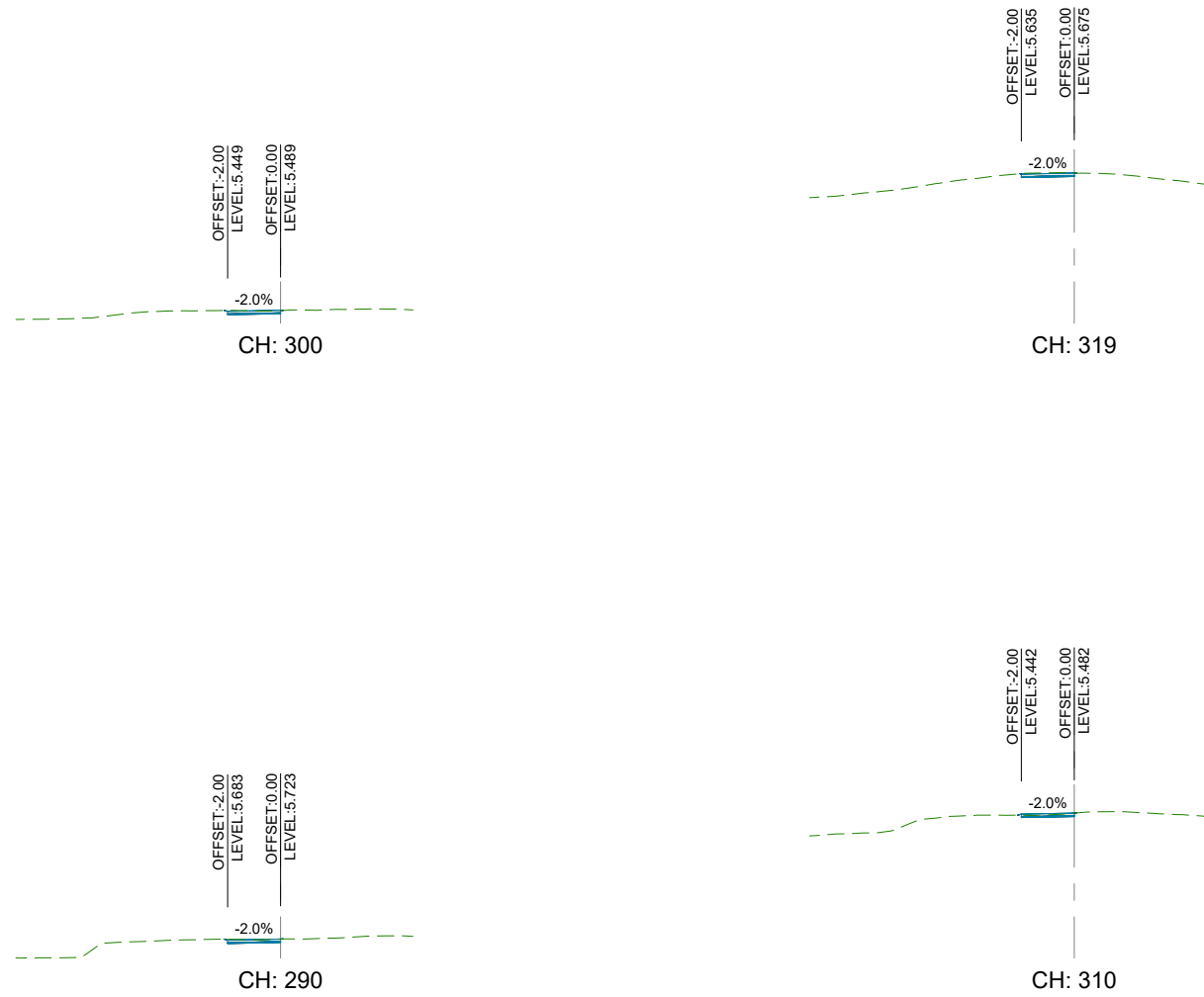
Disclaimer:  
Areas and dimensions may be subject to scale error.  
Scaling from this drawing is at the users risk.

FOR APPROVAL

	<b>SURVEYING ENGINEERING PLANNING ENVIRONMENT</b>	FOR APPROVAL					GENERAL NOTES 1. Coordinates in terms of : New Zealand Transverse Mercator Projection 2. Elevations in terms of : NZ Vertical Datum 2016 3. Contour interval is : NA		LOCATION TE PUKE PROJECT No. 240682.00		TITLE WESTERN BAY OF PLENTY DISTRICT COUNCIL LANDSCAPE ROAD, TE PUKE FOOTPATH - OPTION 1 NEW FOOTPATH CROSS SECTIONS - 04																									
		<table border="1" style="width: 100%; border-collapse: collapse;"> <thead> <tr> <th>NO</th> <th>DATE</th> <th>BY</th> <th>CHKD</th> <th>APPR</th> <th>OPER</th> <th>DESCRIPTION</th> <th>NUMBER</th> <th>TITLE</th> </tr> </thead> <tbody> <tr> <td> </td> <td> </td> <td> </td> <td> </td> <td> </td> <td> </td> <td> </td> <td> </td> <td> </td> </tr> </tbody> </table>	NO	DATE	BY		CHKD	APPR	OPER	DESCRIPTION	NUMBER	TITLE										<table border="1" style="width: 100%; border-collapse: collapse;"> <thead> <tr> <th>AS SCALE</th> <th>AS SHOWN</th> </tr> </thead> <tbody> <tr> <td>SURVEYED</td> <td>-</td> </tr> <tr> <td>DRAWN</td> <td>Q.PHAM</td> </tr> <tr> <td>CHECKED</td> <td>B.PEARSON</td> </tr> </tbody> </table>	AS SCALE	AS SHOWN	SURVEYED	-	DRAWN	Q.PHAM	CHECKED	B.PEARSON	<table border="1" style="width: 100%; border-collapse: collapse;"> <thead> <tr> <th>ORIGINAL SIZE</th> <th>DRAWING No</th> <th>SHEET</th> <th>REVISION</th> </tr> </thead> <tbody> <tr> <td>A3</td> <td>240682.00-GD-01</td> <td>C09</td> <td>A</td> </tr> </tbody> </table>	ORIGINAL SIZE	DRAWING No	SHEET	REVISION	A3
NO	DATE	BY	CHKD	APPR	OPER	DESCRIPTION	NUMBER	TITLE																												
AS SCALE	AS SHOWN																																			
SURVEYED	-																																			
DRAWN	Q.PHAM																																			
CHECKED	B.PEARSON																																			
ORIGINAL SIZE	DRAWING No	SHEET	REVISION																																	
A3	240682.00-GD-01	C09	A																																	



File Name: C:\124\Siata\BTW\12D\240682.00 - Western Bay of Plenty District Council\_753507 Drawings\240682.00-GD-01-Landscape Road Footpath Design - Option 1.dwg - C10 Plot Date: 26/09/2024 Plot Time: 10:19



Disclaimer:  
 Areas and dimensions may be subject to scale error.  
 Scaling from this drawing is at the users risk.

FOR APPROVAL



**SURVEYING  
 ENGINEERING  
 PLANNING  
 ENVIRONMENT**

NO	DATE	BY	CHKD	APPR	OPER	DESCRIPTION	NUMBER	TITLE
A	26/09/24	Q.P.	B.P.			FOR APPROVAL		
REVISIONS						REFERENCE DRAWINGS		

**GENERAL NOTES**  
 1. Coordinates in terms of : New Zealand Transverse Mercator Projection  
 2. Elevations in terms of : NZ Vertical Datum 2016  
 3. Contour interval is : NA



LOCATION: TE PUKE  
 PROJECT No: 240682.00

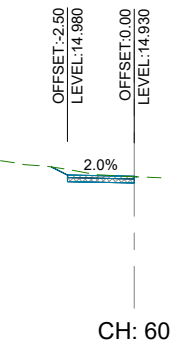
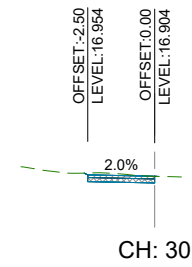
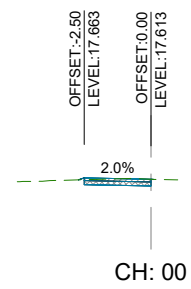
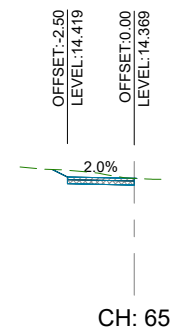
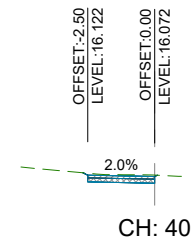
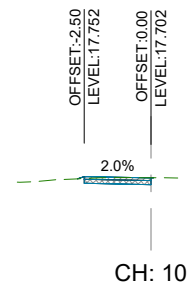
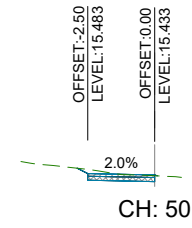
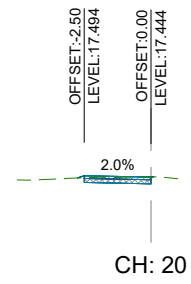
A3 SCALE: AS SHOWN  
 SURVEYED: -  
 DRAWN: Q.PHAM 17/09/2024  
 CHECKED: B.PEARSON -

TITLE: WESTERN BAY OF PLENTY DISTRICT COUNCIL  
 LANDSCAPE ROAD, TE PUKE FOOTPATH - OPTION 1  
 NEW FOOTPATH CROSS SECTIONS - 05

ORIGINAL SIZE	DRAWING No	SHEET	REVISION
A3	240682.00-GD-01	C10	A

10:19

File Name: C:\124\Site\ata\BTW\12D\240682.00 - Western Bay of Plenty District Council\_753507 Drawings\240682.00-GD-01-Landscape Road Footpath Design - Option 1.dwg - C11 Plot Date: 26/09/2024 Plot Time:



Disclaimer:  
Areas and dimensions may be subject to scale error.  
Scaling from this drawing is at the users risk.

FOR APPROVAL



**SURVEYING  
ENGINEERING  
PLANNING  
ENVIRONMENT**

NO	DATE	BY	CHKD	APPR	OPER	DESCRIPTION	NUMBER	TITLE
A	26/09/24	Q.P.	B.P.			FOR APPROVAL		
REVISIONS						REFERENCE DRAWINGS		

**GENERAL NOTES**  
 1. Coordinates in terms of : New Zealand Transverse Mercator Projection  
 2. Elevations in terms of : NZ Vertical Datum 2016  
 3. Contour interval is : NA

Te Kaitiaki  
a rohe māi  
Ngā Kuri-a-Whāreki ki  
Ōkaimoana ki te Uruā

LOCATION	TE PUKE
PROJECT No.	240682.00
A3 SCALE	AS SHOWN
SURVEYED	-
DRAWN	Q.PHAM
CHECKED	B.PEARSON

TITLE			
WESTERN BAY OF PLENTY DISTRICT COUNCIL LANDSCAPE ROAD, TE PUKE FOOTPATH - OPTION 1 NEW CEMETERY SHARED PATH CROSS SECTIONS			
ORIGINAL SIZE	DRAWING No.	SHEET	REVISION
A3	240682.00-GD-01	C11	A

# LANDSCAPE ROAD, TE PUKE FOOTPATH CONCEPT DESIGN DRAWINGS - OPTION 2 WESTERN BAY OF PLENTY DISTRICT COUNCIL

File Name: C:\124\Site\BTW\12D\240682.00 - Western Bay of Plenty District Council\_753507 Drawings\240682.00-GD-01-Landscape Road Footpath Design - Option 2.dwg - C00 Plot Date: 26/09/2024 Plot Time: 10:20

**DRAWING REGISTER**

DRAWING	SHEET	TITLE	DATE OF ISSUE / REVISION			
			A			
240682.00-GD-01	C00	COVER SHEET AND DRAWING INDEX	26/09/2024			
240682.00-GD-01	C01	OVERALL SITE PLAN	26/09/2024			
240682.00-GD-01	C02	NEW FOOTPATH SITE PLAN - 01	26/09/2024			
240682.00-GD-01	C03	NEW FOOTPATH SITE PLAN - 02	26/09/2024			
240682.00-GD-01	C04	NEW CEMETERY SHARED PATH SITE PLAN	26/09/2024			
240682.00-GD-01	C05	TYPICAL CROSS SECTION DETAILS	26/09/2024			
240682.00-GD-01	C06	NEW FOOTPATH CROSS SECTIONS - 01	26/09/2024			
240682.00-GD-01	C07	NEW FOOTPATH CROSS SECTIONS - 02	26/09/2024			
240682.00-GD-01	C08	NEW FOOTPATH CROSS SECTIONS - 03	26/09/2024			
240682.00-GD-01	C09	NEW FOOTPATH CROSS SECTIONS - 04	26/09/2024			
240682.00-GD-01	C10	NEW FOOTPATH CROSS SECTIONS - 05	26/09/2024			
240682.00-GD-01	C11	NEW CEMETERY SHARED PATH CROSS SECTIONS	26/09/2024			

WD	WORKING DRAFT	C	TENDER
A	APPROVAL	O	CONSTRUCTION
B	CONSENTS	AS	AS BUILT

**TRANSMITTAL**

TO	ATTENTION	DATE OF ISSUE / REVISION			
		A			
OWNER / DEVELOPER					
ARCHITECT / DESIGNER					
QUANTITY SURVEYOR					
BUILDER / CONTRACTOR					
TERRITORIAL AUTHORITY	WESTERN BAY OF PLENTY COUNCIL				



PROJECT LOCATION PLAN  
SCALE N.T.S



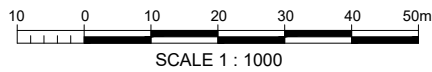
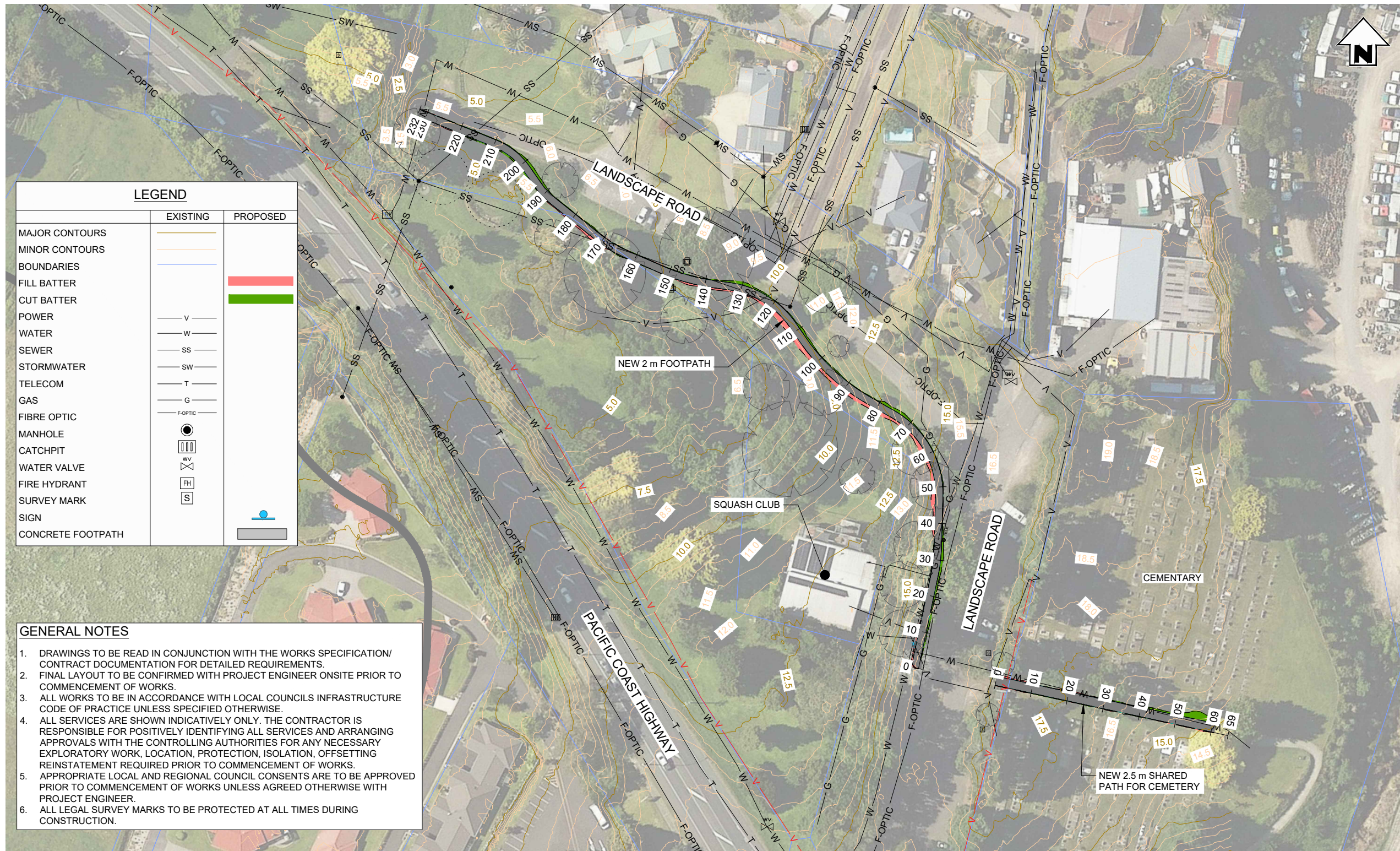
**SURVEYING  
ENGINEERING  
PLANNING  
ENVIRONMENT**



Te Kaunihera  
a rohe māi i  
Ngā Kuri-a-Whārei ki  
Otamarakau ki te Uru

FOR APPROVAL

File Name: C:\124\Site\BTW\12D\240682.00 - Western Bay of Plenty District Council\_753507 Drawings\240682.00-GD-01-Landscape Road Footpath Design - Option 2.dwg - C01 Plot Date: 26/09/2024 Plot Time: 10:20



Disclaimer:  
Areas and dimensions may be subject to scale error.  
Scaling from this drawing is at the users risk.

PLAN  
SCALE 1:1000

FOR APPROVAL

**BTW**  
COMPANY

**SURVEYING**  
**ENGINEERING**  
**PLANNING**  
**ENVIRONMENT**

NO	DATE	BY	CHKD	APPR	OPER	DESCRIPTION	NUMBER	TITLE
A	26/09/24	Q.P.	B.P.			FOR APPROVAL		
REVISIONS						DESCRIPTION	NUMBER	TITLE
REFERENCE DRAWINGS								

**GENERAL NOTES**

- Coordinates in terms of: New Zealand Transverse Mercator Projection
- Elevations in terms of: NZ Vertical Datum 2016
- Contour interval is: 0.5m

**Western Bay of Plenty District Council**  
Te Kaunihara  
a rohe mai i  
Ngā Kuri-a-Whāreki ki  
Ōtāhoro/Kaitiaki te Ūruā

LOCATION	TE PUKE
PROJECT No.	240682.00
A3 SCALE	AS SHOWN
SURVEYED	-
DRAWN	Q.PHAM
CHECKED	B.PEARSON

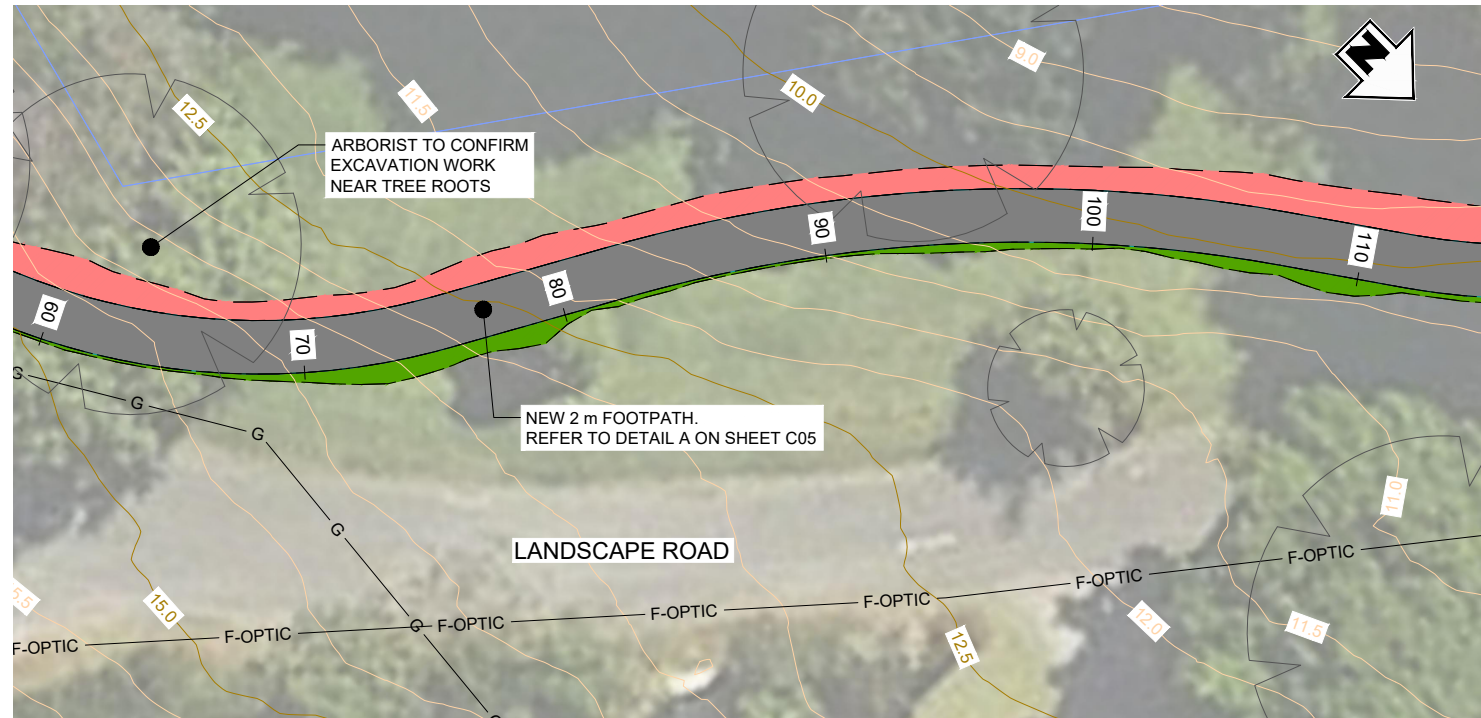
TITLE		WESTERN BAY OF PLENTY DISTRICT COUNCIL LANDSCAPE ROAD, TE PUKE FOOTPATH - OPTION 2 OVERALL SITE PLAN	
ORIGINAL SIZE	DRAWING No.	SHEET	REVISION
A3	240682.00-GD-01	C01	A

File Name: C:\124\Site\ata\BTW\12D\240682.00 - Western Bay of Plenty District Council\_753507 Drawings\240682.00-GD-01-Landscape Road Footpath Design - Option 2.dwg - C02 Plot Date: 26/09/2024 Plot Time: 10:20



PLAN  
SCALE 1:250

LEGEND	
EXISTING	PROPOSED
MAJOR CONTOURS	
MINOR CONTOURS	
BOUNDARIES	
FILL BATTER	<span style="background-color: red; border: 1px solid black; display: inline-block; width: 20px; height: 10px;"></span>
CUT BATTER	<span style="background-color: green; border: 1px solid black; display: inline-block; width: 20px; height: 10px;"></span>
POWER	— V —
WATER	— W —
SEWER	— SS —
STORMWATER	— SW —
TELECOM	— T —
GAS	— G —
FIBRE OPTIC	— F-OPTIC —
MANHOLE	
CATCHPIT	
WATER VALVE	
FIRE HYDRANT	
SURVEY MARK	
SIGN	
CONCRETE FOOTPATH	



PLAN  
SCALE 1:250

FOR APPROVAL



Disclaimer:  
Areas and dimensions may be subject to scale error.  
Scaling from this drawing is at the users risk.



**SURVEYING  
ENGINEERING  
PLANNING  
ENVIRONMENT**

NO	DATE	BY	CHKD	APPR	OPER	DESCRIPTION	NUMBER	TITLE
A	26/09/24	Q.P.	B.P.			FOR APPROVAL		
REVISIONS								
REFERENCE DRAWINGS								

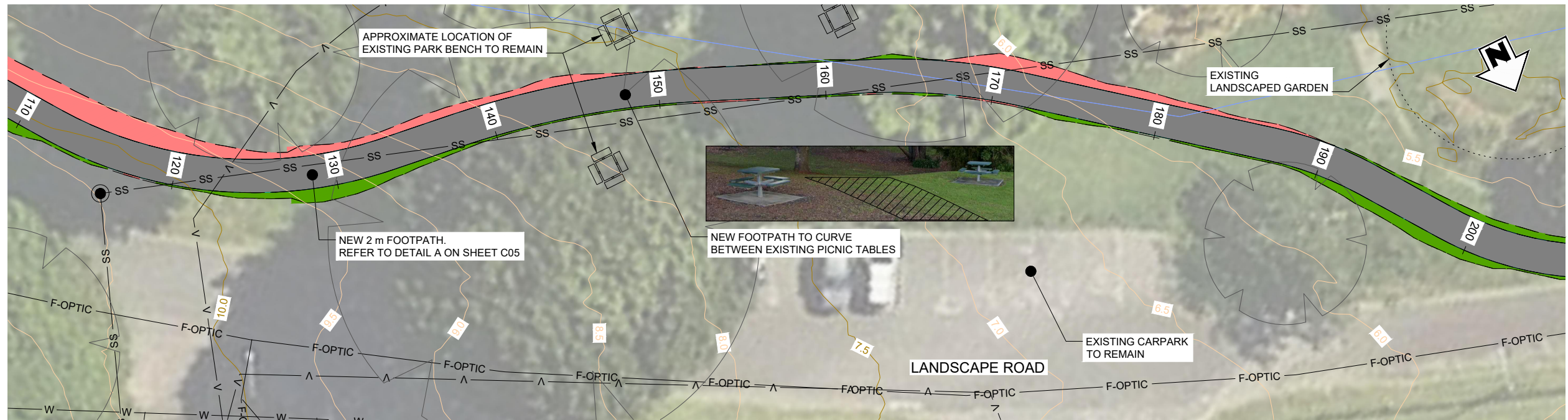
**GENERAL NOTES**  
1. Coordinates in terms of : New Zealand Transverse Mercator Projection  
2. Elevations in terms of : NZ Vertical Datum 2016  
3. Contour interval is : 0.5m



LOCATION	TE PUKE
PROJECT No.	240682.00
A3 SCALE	AS SHOWN
SURVEYED	-
DRAWN	Q.PHAM
CHECKED	B.PEARSON

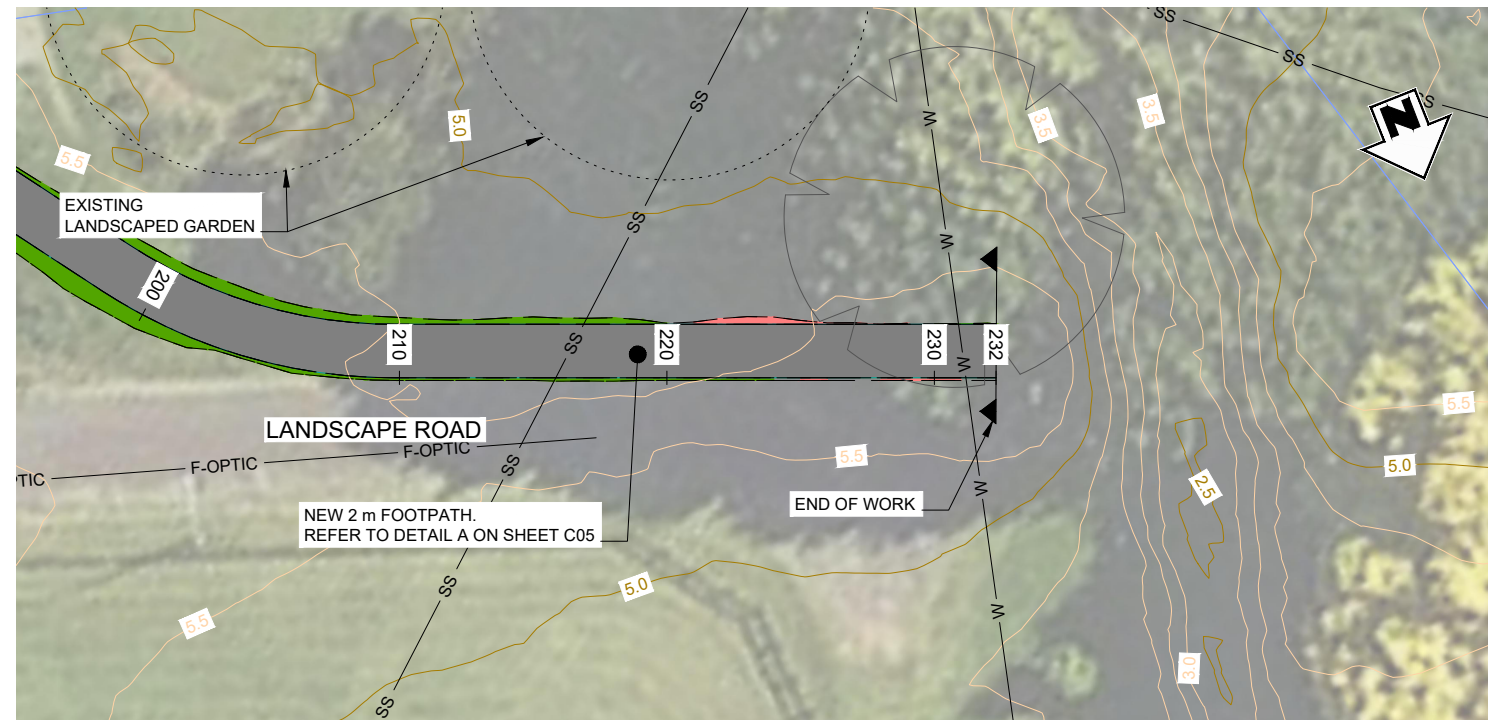
TITLE		WESTERN BAY OF PLENTY DISTRICT COUNCIL	
		LANDSCAPE ROAD, TE PUKE FOOTPATH - OPTION 2	
		NEW FOOTPATH SITE PLAN - 01	
ORIGINAL SIZE	DRAWING No	SHEET	REVISION
A3	240682.00-GD-01	C02	A

File Name: C:\124\State\BTW\124\240682.00 - Western Bay of Plenty District Council\_753507 Drawings\240682.00-GD-01-Landscape Road Footpath Design - Option 2.dwg - C03 Plot Date: 26/09/2024 Plot Time: 10:20



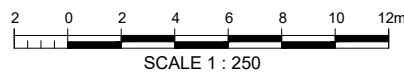
PLAN  
SCALE 1:250

LEGEND		
EXISTING	PROPOSED	
MAJOR CONTOURS		
MINOR CONTOURS		
BOUNDARIES		
FILL BATTER		
CUT BATTER		
POWER		
WATER		
SEWER		
STORMWATER		
TELECOM		
GAS		
FIBRE OPTIC		
MANHOLE		
CATCHPIT		
WATER VALVE		
FIRE HYDRANT		
SURVEY MARK		
CONCRETE FOOTPATH		



PLAN  
SCALE 1:250

FOR APPROVAL



Disclaimer:  
Areas and dimensions may be subject to scale error.  
Scaling from this drawing is at the users risk.



**SURVEYING  
ENGINEERING  
PLANNING  
ENVIRONMENT**

NO	DATE	BY	CHKD	APPR	OPER	DESCRIPTION	NUMBER	TITLE
A	26/09/24	Q.P.	B.P.			FOR APPROVAL		
REVISIONS								
REFERENCE DRAWINGS								

GENERAL NOTES  
1. Coordinates in terms of : New Zealand Transverse Mercator Projection  
2. Elevations in terms of : NZ Vertical Datum 2016  
3. Contour interval is : 0.5m



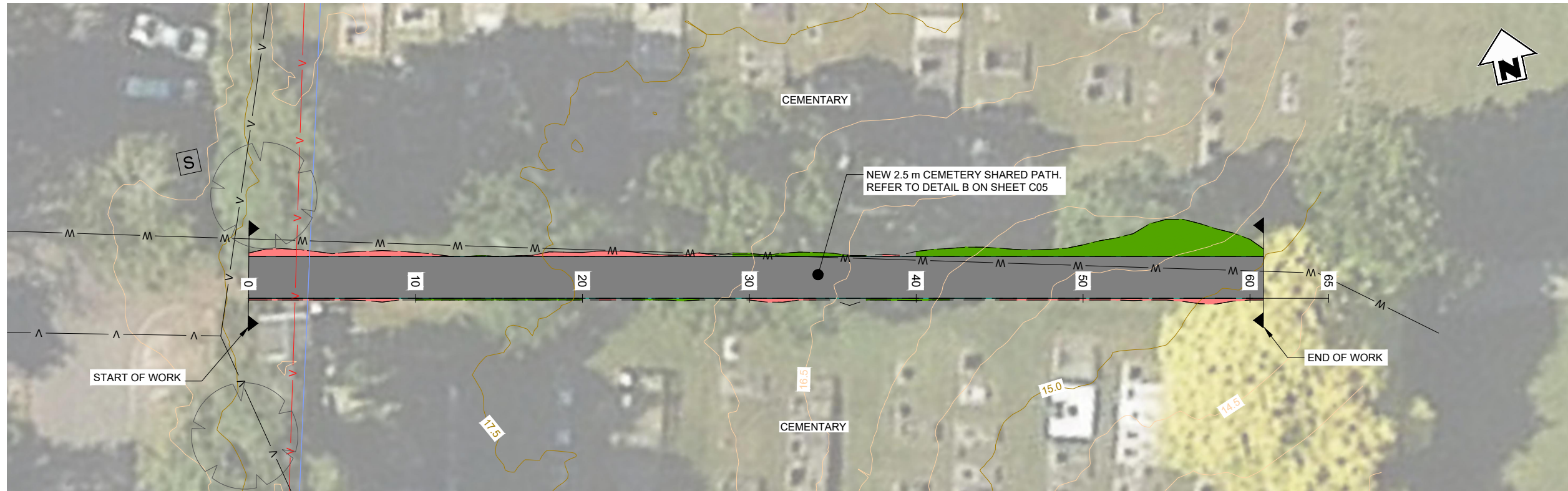
LOCATION  
TE PUKE  
PROJECT No.  
240682.00

A3 SCALE  
AS SHOWN  
SURVEYED  
DRAWN  
CHECKED

TITLE  
WESTERN BAY OF PLENTY DISTRICT COUNCIL  
LANDSCAPE ROAD, TE PUKE FOOTPATH - OPTION 2  
NEW FOOTPATH SITE PLAN - 02

ORIGINAL SIZE A3	DRAWING No. 240682.00-GD-01	SHEET C03	REVISION A
---------------------	--------------------------------	--------------	---------------

File Name: C:\124\State\BTW\12D\240682.00 - Western Bay of Plenty District Council\_753507 Drawings\240682.00-GD-01-Landscape Road Footpath Design - Option 2.dwg - C04 Plot Date: 26/09/2024 Plot Time: 10:20



PLAN  
SCALE 1:250

LEGEND		
	EXISTING	PROPOSED
MAJOR CONTOURS		
MINOR CONTOURS		
BOUNDARIES		
FILL BATTER		
CUT BATTER		
POWER		
WATER		
SEWER		
STORMWATER		
TELECOM		
GAS		
FIBRE OPTIC		
MANHOLE		
CATCHPIT		
WATER VALVE		
FIRE HYDRANT		
SURVEY MARK		
CONCRETE FOOTPATH		



Disclaimer:  
Areas and dimensions may be subject to scale error.  
Scaling from this drawing is at the users risk.

FOR APPROVAL



**SURVEYING  
ENGINEERING  
PLANNING  
ENVIRONMENT**

NO	DATE	BY	CHKD	APPR	OPER	DESCRIPTION	NUMBER	TITLE
A	26/09/24	Q.P.	B.P.			FOR APPROVAL		
REVISIONS						REFERENCE DRAWINGS		

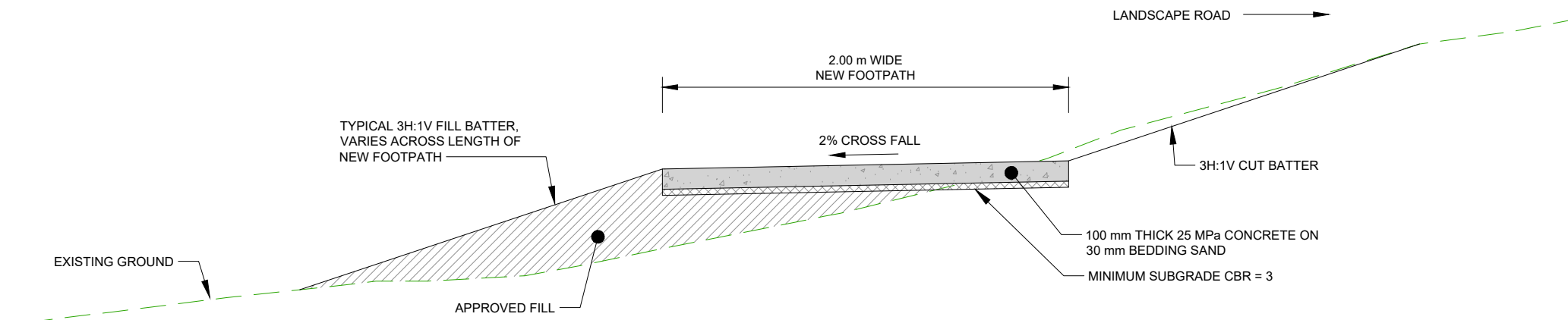
GENERAL NOTES  
1. Coordinates in terms of : New Zealand Transverse Mercator Projection  
2. Elevations in terms of : NZ Vertical Datum 2016  
3. Contour interval is : 0.5m



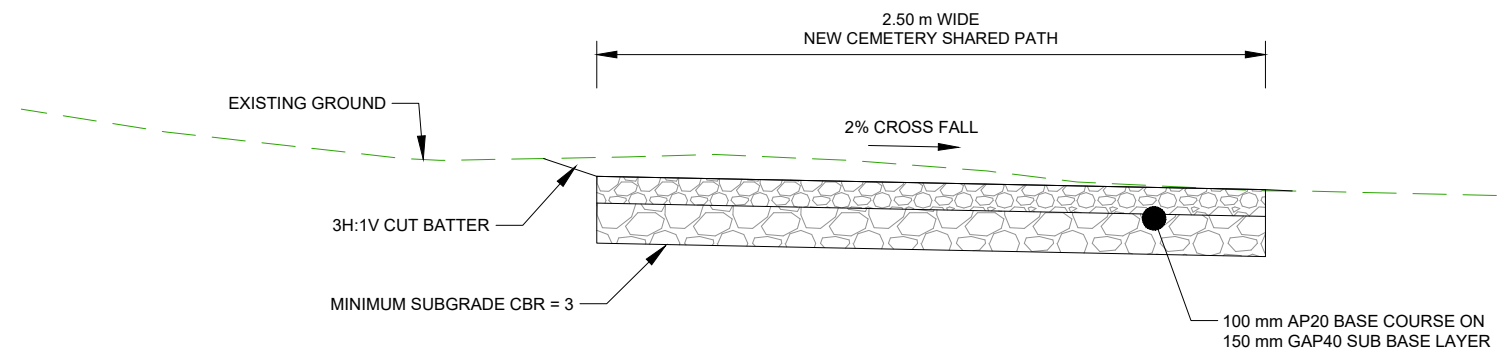
LOCATION	TE PUKE
PROJECT No.	240682.00
A3 SCALE	AS SHOWN
SURVEYED	-
DRAWN	Q.PHAM
CHECKED	B.PEARSON

TITLE			
WESTERN BAY OF PLENTY DISTRICT COUNCIL LANDSCAPE ROAD, TE PUKE FOOTPATH - OPTION 2 NEW CEMETERY SHARED PATH SITE PLAN			
ORIGINAL SIZE	DRAWING No	SHEET	REVISION
A3	240682.00-GD-01	C04	A

File Name: C:\124\Stata\BTW\12D\240682.00 - Western Bay of Plenty District Council\_753507 Drawings\240682.00-GD-01-Landscape Road Footpath Design - Option 2.dwg - C05 Plot Date: 26/09/2024 Plot Time: 10:20



**DETAIL A**  
**NEW 2 m WIDE FOOTPATH TYPICAL CROSS SECTION DETAIL**  
 SCALE: 1:25



**DETAIL B**  
**NEW 2.5 m WIDE CEMETERY SHARED PATH TYPICAL CROSS SECTION DETAIL**  
 SCALE: 1:25



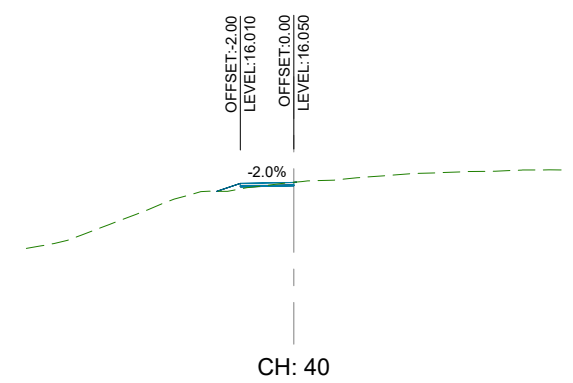
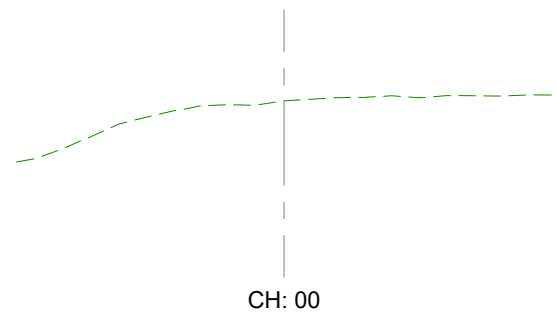
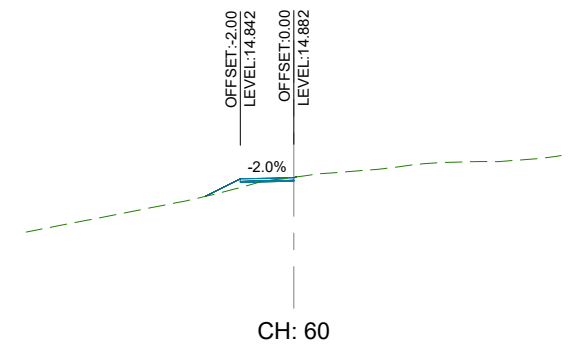
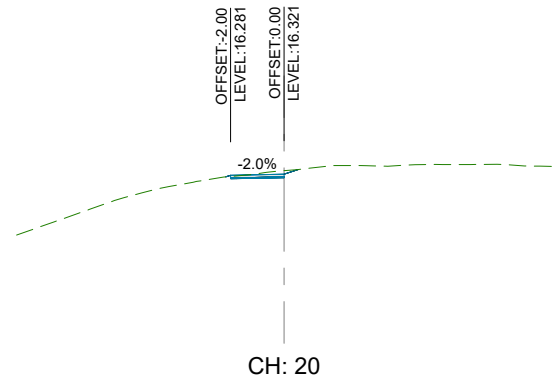
Disclaimer:  
 Areas and dimensions may be subject to scale error.  
 Scaling from this drawing is at the users risk.

FOR APPROVAL

	<b>SURVEYING ENGINEERING PLANNING ENVIRONMENT</b>	FOR APPROVAL					GENERAL NOTES 1. Coordinates in terms of : New Zealand Transverse Mercator Projection 2. Elevations in terms of : NZ Vertical Datum 2016 3. Contour interval is : NA		LOCATION TE PUKE PROJECT No. 240682.00		TITLE WESTERN BAY OF PLENTY DISTRICT COUNCIL LANDSCAPE ROAD, TE PUKE FOOTPATH - OPTION 2 TYPICAL CROSS SECTION DETAILS																									
		<table border="1" style="width: 100%; border-collapse: collapse;"> <thead> <tr> <th>NO</th> <th>DATE</th> <th>BY</th> <th>CHKD</th> <th>APPR</th> <th>OPER</th> <th>DESCRIPTION</th> <th>NUMBER</th> <th>TITLE</th> </tr> </thead> <tbody> <tr> <td> </td> <td> </td> <td> </td> <td> </td> <td> </td> <td> </td> <td> </td> <td> </td> <td> </td> </tr> </tbody> </table>	NO	DATE	BY		CHKD	APPR	OPER	DESCRIPTION	NUMBER	TITLE										<table border="1" style="width: 100%; border-collapse: collapse;"> <thead> <tr> <th>A3 SCALE</th> <th>AS SHOWN</th> </tr> </thead> <tbody> <tr> <td>SURVEYED</td> <td>-</td> </tr> <tr> <td>DRAWN</td> <td>Q.PHAM</td> </tr> <tr> <td>CHECKED</td> <td>B.PEARSON</td> </tr> </tbody> </table>	A3 SCALE	AS SHOWN	SURVEYED	-	DRAWN	Q.PHAM	CHECKED	B.PEARSON	<table border="1" style="width: 100%; border-collapse: collapse;"> <thead> <tr> <th>ORIGINAL SIZE</th> <th>DRAWING No</th> <th>SHEET</th> <th>REVISION</th> </tr> </thead> <tbody> <tr> <td>A3</td> <td>240682.00-GD-01</td> <td>C05</td> <td>A</td> </tr> </tbody> </table>	ORIGINAL SIZE	DRAWING No	SHEET	REVISION	A3
NO	DATE	BY	CHKD	APPR	OPER	DESCRIPTION	NUMBER	TITLE																												
A3 SCALE	AS SHOWN																																			
SURVEYED	-																																			
DRAWN	Q.PHAM																																			
CHECKED	B.PEARSON																																			
ORIGINAL SIZE	DRAWING No	SHEET	REVISION																																	
A3	240682.00-GD-01	C05	A																																	



File Name: C:\124\Stata\BTW\12D\240682.00 - Western Bay of Plenty District Council\_753507 Drawings\240682.00-GD-01-Landscape Road Footpath Design - Option 2.dwg - C06 Plot Date: 26/09/2024 Plot Time: 10:20

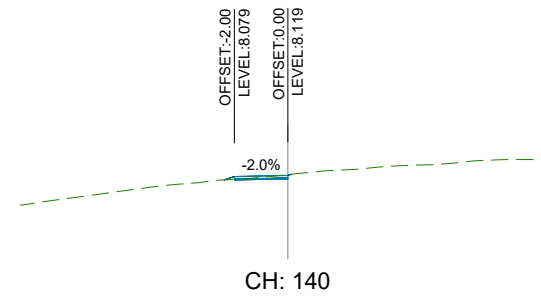
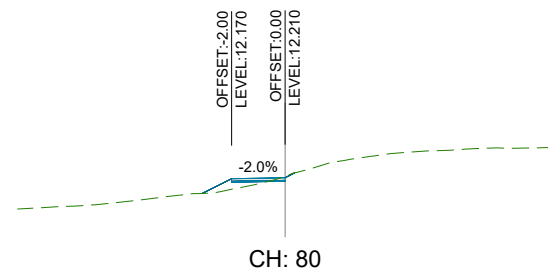
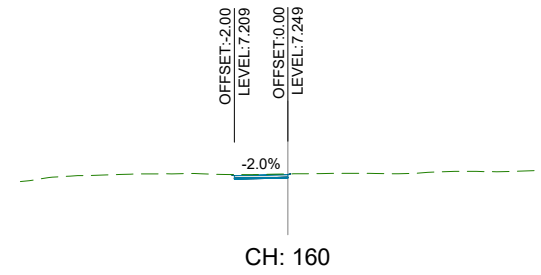
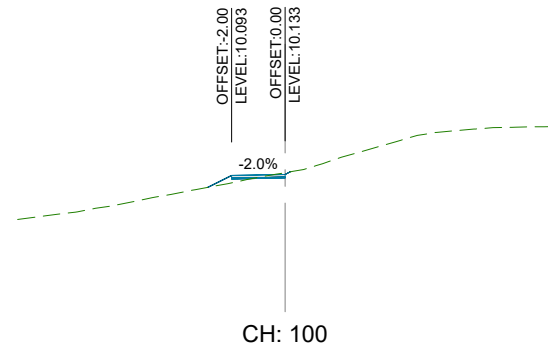
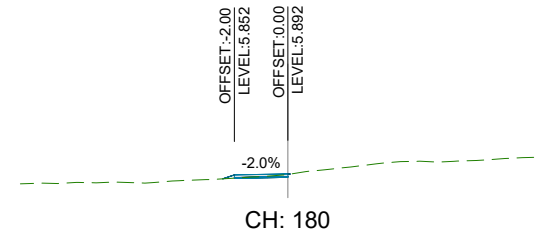
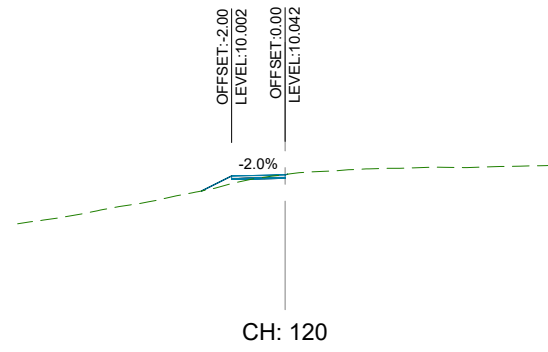


Disclaimer:  
Areas and dimensions may be subject to scale error.  
Scaling from this drawing is at the users risk.

FOR APPROVAL

	SURVEYING ENGINEERING PLANNING ENVIRONMENT	REVISIONS				REFERENCE DRAWINGS		GENERAL NOTES 1. Coordinates in terms of : New Zealand Transverse Mercator Projection 2. Elevations in terms of : NZ Vertical Datum 2016 3. Contour interval is : NA	LOCATION TE PUKE PROJECT No. 240682.00	TITLE WESTERN BAY OF PLENTY DISTRICT COUNCIL LANDSCAPE ROAD, TE PUKE FOOTPATH - OPTION 2 NEW FOOTPATH CROSS SECTIONS - 01			
		A 26/09/24 Q.P. B.P. FOR APPROVAL								A3 SCALE AS SHOWN	SURVEYED -	ORIGINAL SIZE A3	DRAWING No. 240682.00-GD-01

File Name: C:\124\Site\ata\BTW\12D\240682.00 - Western Bay of Plenty District Council\_753507 Drawings\240682.00-GD-01-Landscape Road Footpath Design - Option 2.dwg - C07 Plot Date: 26/09/2024 Plot Time: 10:20



Disclaimer:  
Areas and dimensions may be subject to scale error.  
Scaling from this drawing is at the users risk.

FOR APPROVAL



**SURVEYING  
ENGINEERING  
PLANNING  
ENVIRONMENT**

NO	DATE	BY	CHKD	APPR	OPER	DESCRIPTION	NUMBER	TITLE
A	26/09/24	Q.P.	B.P.			FOR APPROVAL		
REVISIONS								
REFERENCE DRAWINGS								

**GENERAL NOTES**

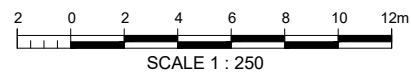
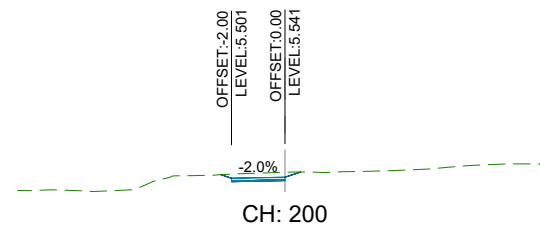
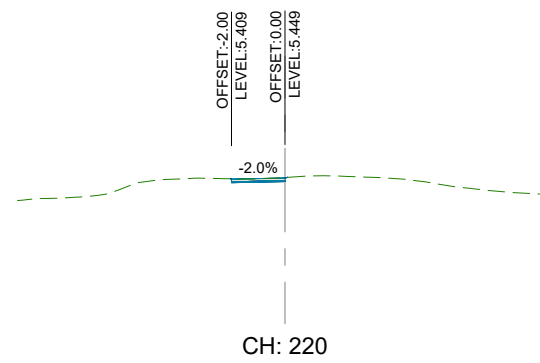
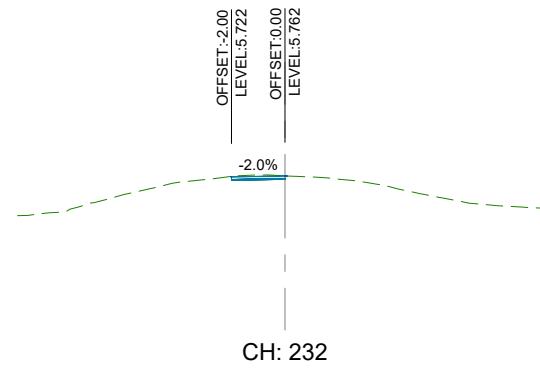
- Coordinates in terms of : New Zealand Transverse Mercator Projection
- Elevations in terms of : NZ Vertical Datum 2016
- Contour interval is : NA

Te Kaitiaki  
a rohe mai i  
Ngā Kuri-a-Whāreai ki  
Ōtaimoko/Kāu ki te Uruāi

LOCATION	TE PUKE
PROJECT No.	240682.00
A3 SCALE	AS SHOWN
SURVEYED	-
DRAWN	Q.PHAM
CHECKED	B.PEARSON

TITLE			
WESTERN BAY OF PLENTY DISTRICT COUNCIL LANDSCAPE ROAD, TE PUKE FOOTPATH - OPTION 2 NEW FOOTPATH CROSS SECTIONS - 02			
ORIGINAL SIZE	DRAWING No	SHEET	REVISION
A3	240682.00-GD-01	C07	A

File Name: C:\124\Stata\BTW\12D\240682.00 - Western Bay of Plenty District Council\_753507 Drawings\240682.00-GD-01-Landscape Road Footpath Design - Option 2.dwg - C08 Plot Date: 26/09/2024 Plot Time: 10:20



Disclaimer:  
Areas and dimensions may be subject to scale error.  
Scaling from this drawing is at the users risk.

FOR APPROVAL

	<b>SURVEYING ENGINEERING PLANNING ENVIRONMENT</b>	<table border="1" style="width: 100%; border-collapse: collapse;"> <tr> <td style="width: 5%;"> </td> <td style="width: 5%;"> </td> <td style="width: 5%;"> </td> <td style="width: 5%;"> </td> <td style="width: 5%;"> </td> <td style="width: 5%;"> </td> <td style="width: 5%;"> </td> <td style="width: 5%;"> </td> <td style="width: 5%;"> </td> <td style="width: 5%;"> </td> </tr> </table>											<b>GENERAL NOTES</b> 1. Coordinates in terms of : New Zealand Transverse Mercator Projection 2. Elevations in terms of : NZ Vertical Datum 2016 3. Contour interval is : NA	LOCATION: <b>TE PUKE</b> PROJECT No.: 240682.00	<b>TITLE</b> WESTERN BAY OF PLENTY DISTRICT COUNCIL LANDSCAPE ROAD, TE PUKE FOOTPATH - OPTION 2 NEW FOOTPATH CROSS SECTIONS - 03																															
<table border="1" style="width: 100%; border-collapse: collapse;"> <tr> <td style="width: 5%;">A</td> <td style="width: 5%;">26/09/24</td> <td style="width: 5%;">Q.P.</td> <td style="width: 5%;">B.P.</td> <td style="width: 5%;"> </td> <td style="width: 5%;"> </td> <td style="width: 5%;"> </td> <td style="width: 5%;"> </td> <td style="width: 5%;"> </td> <td style="width: 5%;"> </td> </tr> <tr> <td>NO</td> <td>DATE</td> <td>BY</td> <td>CHKD</td> <td>APPR</td> <td>OPER</td> <td> </td> <td> </td> <td> </td> <td> </td> </tr> </table>	A	26/09/24	Q.P.	B.P.							NO	DATE	BY	CHKD	APPR	OPER					<table border="1" style="width: 100%; border-collapse: collapse;"> <tr> <td style="width: 5%;">A3 SCALE</td> <td style="width: 5%;">AS SHOWN</td> <td style="width: 5%;"> </td> <td style="width: 5%;"> </td> </tr> <tr> <td>SURVEYED</td> <td> </td> <td> </td> <td> </td> </tr> <tr> <td>DRAWN</td> <td>Q.PHAM</td> <td>17/09/2024</td> <td> </td> </tr> <tr> <td>CHECKED</td> <td>B.PEARSON</td> <td> </td> <td> </td> </tr> </table>	A3 SCALE	AS SHOWN			SURVEYED				DRAWN	Q.PHAM	17/09/2024		CHECKED	B.PEARSON			<table border="1" style="width: 100%; border-collapse: collapse;"> <tr> <td style="width: 5%;">ORIGINAL SIZE</td> <td style="width: 5%;">DRAWING No</td> <td style="width: 5%;">SHEET</td> <td style="width: 5%;">REVISION</td> </tr> <tr> <td>A3</td> <td>240682.00-GD-01</td> <td>C08</td> <td>A</td> </tr> </table>	ORIGINAL SIZE	DRAWING No	SHEET	REVISION	A3	240682.00-GD-01	C08	A
A	26/09/24	Q.P.	B.P.																																											
NO	DATE	BY	CHKD	APPR	OPER																																									
A3 SCALE	AS SHOWN																																													
SURVEYED																																														
DRAWN	Q.PHAM	17/09/2024																																												
CHECKED	B.PEARSON																																													
ORIGINAL SIZE	DRAWING No	SHEET	REVISION																																											
A3	240682.00-GD-01	C08	A																																											

File Name: C:\124\Stata\BTW\12D\240682.00 - Western Bay of Plenty District Council\_753507 Drawings\240682.00-GD-01-Landscape Road Footpath Design - Option 2.dwg - C09 Plot Date: 26/09/2024 Plot Time: 10:20



Disclaimer:  
Areas and dimensions may be subject to scale error.  
Scaling from this drawing is at the users risk.

FOR APPROVAL



**SURVEYING  
ENGINEERING  
PLANNING  
ENVIRONMENT**

REVISIONS						REFERENCE DRAWINGS	
NO	DATE	BY	CHKD	APPR	OPER	DESCRIPTION	TITLE
A	26/09/24	Q.P	B.P			FOR APPROVAL	

**GENERAL NOTES**

- Coordinates in terms of : New Zealand Transverse Mercator Projection
- Elevations in terms of : NZ Vertical Datum 2016
- Contour interval is : NA

**Western Bay of Plenty District Council**  
Te Kaitiaki  
a rohe māi  
Ngā Kuri-a-Whāreki ki  
Ōtāmokau ki te Uruā

LOCATION		TE PUKE	
PROJECT No.		240682.00	
A3 SCALE	AS SHOWN		
SURVEYED	-	-	-
DRAWN	Q.PHAM	17/09/2024	-
CHECKED	B.PEARSON	-	-

TITLE			
WESTERN BAY OF PLENTY DISTRICT COUNCIL LANDSCAPE ROAD, TE PUKE FOOTPATH - OPTION 2 NEW CEMETERY SHARED PATH CROSS SECTIONS			
ORIGINAL SIZE	DRAWING No	SHEET	REVISION
A3	240682.00-GD-01	C09	A

**9.5 TE PUKE COMMUNITY BOARD – FINANCIAL REPORT OCTOBER 2024****File Number:** A6537963**Author:** Ezelle Thiart, Finance Business Partner**Authoriser:** Allan Carey, Finance Business Partner Lead**EXECUTIVE SUMMARY**

This report provides the Community Board with two-monthly monitoring of its operational budget. Attached are the financial statements for the period ended 31 October 2024 (**Attachment 1**).

Total operational costs are under budget year to date.

**RECOMMENDATION**

1. The Financial Business Advisor's report dated 21 November 2024 titled 'Te Puke Community Board – Financial Report October 2024' be received.

**Grant payments made to date:**

Resolution	Description	\$
	No transactions year to date	0
	<b>2024/25 Total grants paid to date</b>	

**Committed – Operational expenditure:**

Resolution	Description	\$
TPC23-2.4	Approve the funding for the installation of power for a second Christmas tree at the Te Puke west entrance at an estimated cost of \$15,000 to be funded from their Street Decoration account	15,000
TPC23-4.4	Approves the installation of public Wi-Fi in Jubilee Park at an estimated cost of \$3,061, funded from the contingency account.	3,061
TPC24-1.5	Citizens RSA Te Puke ANZAC Committee – to contribute towards catering and other operating expenses for the annual Te Puke Civic ANZAC Day Commemoration.	1,000

TPC24-4.12	Approve \$2,945 from the Te Puke Community Board Contingency Account, for Member N Chauhan to attend the 2024 Local Government New Zealand Conference. (Spent = \$1,785)	1,148
TPC24 – 3.9	Approve the grant application from the Made in Te Puke Trust for \$2,258.00, to cover the cost of Waste Watchers LTD for the Te Kete Matariki 2024. This grant will be funded from the Te Puke Community Board Grants Account	2,258
TPC24-1.3	Approve the amount of \$2,300.00 from the Te Puke Community Board contingency account to fund the painting of a mural on the Rangioru Sports Club fence line, to be done by Millie Olive Pidwell.	2,300
TPC24-3.9	Approve the grant application from Tauranga and Western Bay Indian Association Inc for \$1,500 from the Te Puke Community Board grant account to help cover the cost of the Teej Musical Evening	1,500
	<b>2024/25 Total operational commitments</b>	<b>26,267</b>



**2024/25 Reserve analysis:**

Resolution	Description	\$ (Payments made)
	2024/25 Opening balance	163,764
TPC24-3.2	Disc Golf Course at Donovan Park	(1,811)
TPC24-1.3	Installation of a shade sail for the Te Puke Dog Park	(1,270)
	<b>2024/25 Closing Reserve balance before commitments</b>	<b>160,682</b>

**Remaining commitments from Te Puke Community Board Reserve Account**

Resolution	Description	\$ (Remaining funds)
	2024/25 Closing balance before committed expenditure	160,682
TP22-4.5	Approve up to \$30,000 to be paid from Te Puke Community Board Reserve Account for costs relating to the Te Puke Story Boards Project.	(30,000)
TP22-4.6	Approve up to \$20,000 to be paid from the Te Puke Community Board Reserve Account for costs relating to the new dog park at Laurence Oliver Park, Te Puke.	(20,000)
TPC24-1.3	Approve the amount of \$1,550.00 from the Te Puke Community Board reserves account to put towards the cost of the installation of a shade sail for the Te Puke Dog Park, with an upgraded design being sought to include steel poles. (Spent \$1,270.42)	(280)
	<b>2024/25 Closing balance after the committed expenditure</b>	<b>110,402</b>

**ATTACHMENTS**

- Te Puke Community Board – Financial Report October 2024**  

Western Bay of Plenty District Council						
Income and Expenditure Statement						
For the period ended 31 October 2024						
Te Puke Community Board						
	Year to Date				Full Year	Last Year
	Actual	Budget	Variance (Unfav)/Fav		Budget	Actual
	\$	\$	\$		\$	\$
<b>Direct Costs</b>						
Contingency - [see breakdown below]	1,645	7,216	5,571	☑	21,648	400
Grants	0	2,144	2,144	☑	13,473	9,958
Mileage Allowance	0	352	352	☑	1,056	0
Salaries	7,633	10,180	2,547	☑	30,540	28,957
Security	318	0	(318)	⊗	0	1,365
Street Decoration	0	0	0	☑	0	5,451
Inter Department Charges	12,125	16,168	4,043	☑	48,504	50,832
<b>Total Operating Costs</b>	<b>21,720</b>	<b>36,060</b>	<b>14,340</b>	☑	<b>115,221</b>	<b>96,963</b>
<b>Total Costs</b>	<b>21,720</b>	<b>36,060</b>	<b>14,340</b>	☑	<b>115,221</b>	<b>96,963</b>
<b>Income</b>						
Rate Income	57,932	38,408	19,524	☑	115,224	127,733
<b>Total Direct Income</b>	<b>57,932</b>	<b>38,408</b>	<b>19,524</b>	☑	<b>115,224</b>	<b>127,733</b>
<b>Net Cost of Service</b>	<b>36,212</b>	<b>2,348</b>	<b>33,864</b>	☑	<b>3</b>	<b>30,770</b>
<b>Contingency - breakdown</b>						
Credit received for 2024 Hall rental	(140)			☑	<i>Favourable Variance</i>	
TPC24-4.12 Approve \$2,945 from the Te Puke Community Board Contingency Account, for Member N Chauhan to attend the 2024 Local Government New Zealand Conference.	1,785			⊗	<i>Unfavourable Variance</i>	
<b>Year to date contingency costs</b>	<b>1,645</b>					
<b>Community Board Reserves</b>						
<b>Opening Balance - Surplus (Deficit)</b>	<b>163,764</b>					
Disc Golf Course at Donovan Park (TPC24-3.2)	(1,811)					
Installation of a shade sail for the Te Puke Dog Park (TPC24-1.3)	(1,270)					
<b>(Decrease) Increase in year</b>	<b>(3,082)</b>					
<b>Closing Balance - Surplus (Deficit)</b>	<b>160,682</b>					
<b>Town Centre Development Reserves</b>						
<b>Opening Balance - Surplus (Deficit)</b>	<b>79,688</b>					
No transactions to date	0					
<b>(Decrease) Increase in year</b>	<b>0</b>					
<b>Closing Balance - Surplus (Deficit)</b>	<b>79,688</b>					